



**Connells**

Riverside Park Farleigh Bridge  
East Farleigh Maidstone



## Property Description

Located within the sought-after Riverside Park development, this well-maintained park home offers comfortable, low-maintenance living in a quiet and established residential setting.

The property is ideal for those seeking a relaxed lifestyle, with well-proportioned accommodation throughout.

The main reception area provides a bright and welcoming living space, with ample room for seating with a separate dining room. The fitted kitchen offers a practical layout with suitable storage and workspace.

The home benefits from well-sized bedrooms, providing comfortable accommodation with fitted or freestanding storage potential. The shower room/bathroom is conveniently positioned and designed for ease of use.

Externally, the property enjoys private outside space with a shed which has electric in, perfect for sitting out and enjoying the surroundings.

The development itself is known for its peaceful atmosphere and community feel, whilst still being conveniently positioned for access to Maidstone town centre, local shops, and amenities.

Riverside walks along the Medway are within easy reach, and transport links including nearby bus routes and mainline stations make this an ideal location for both convenience and lifestyle.

This property represents an excellent opportunity for downsizers or those looking for an affordable and manageable home in a well-regarded park setting.



## Agents Note

There are a number of obligations on both sellers and buyers when completing the process for purchasing a park home and we recommend taking advice from a solicitor or another professional - independent from the seller or site owner – when buying a home.

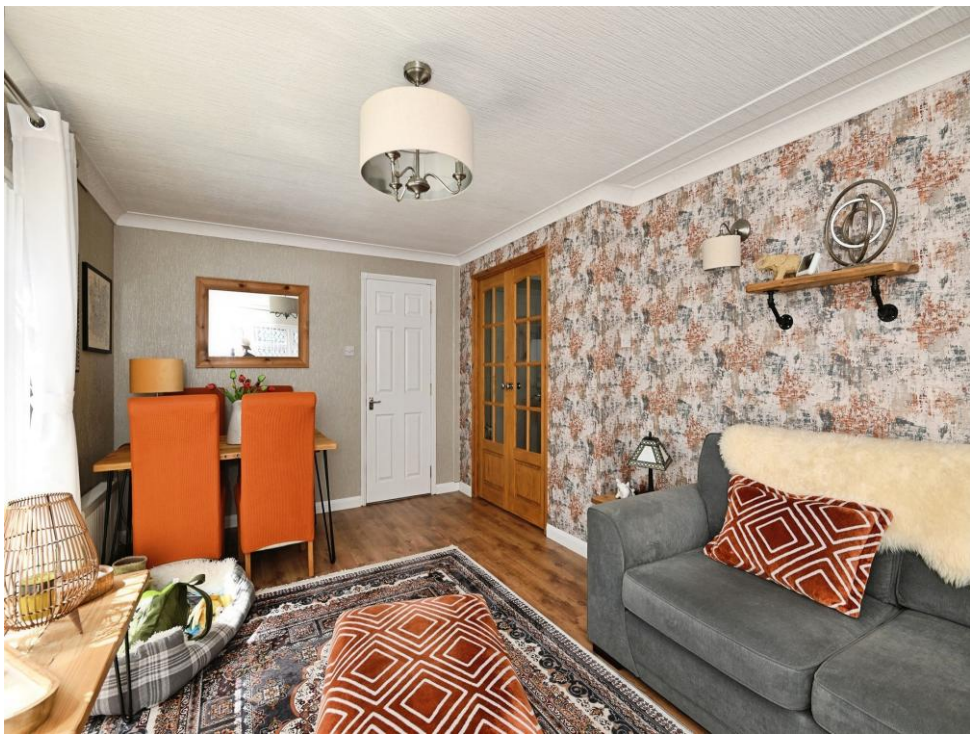
Sites often have requirements specific to the purchase of a property and to 'the site' in general, which could include paying the site owners commission. Intending purchasers should satisfy themselves about any such requirements including any specific restrictions on occupancy or residential use of the home.

Guidance can be sought from Park homes - GOV.UK ([www.gov.uk](http://www.gov.uk))

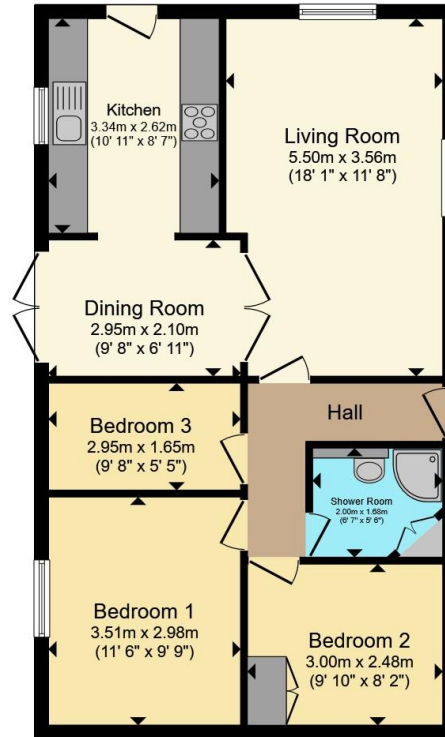
## Agents Note

There is a pitch fee of £278 per month.









Total floor area 65.7 m<sup>2</sup> (707 sq.ft.) approx

This floor plan is for illustrative purposes only. It is not drawn to scale. Any measurements, floor areas (including any total floor area), openings and orientation are approximate. No details are guaranteed, they cannot be relied upon for any purpose and they do not form part of any agreement. No liability is taken for any error, omission or misstatement. A party must rely upon its own inspection(s). Powered by [www.propertybox.io](http://www.propertybox.io)



To view this property please contact Connells on

**T 01622 751034**  
**E [maidstone@connells.co.uk](mailto:maidstone@connells.co.uk)**

30 King Street  
 MAIDSTONE ME14 1BS

EPC Rating: Exempt  
 Council Tax Band: Deleted

Tenure:

**view this property online [connells.co.uk/Property/MAI408698](http://connells.co.uk/Property/MAI408698)**

We are currently awaiting Tenure details. For further information please contact the branch. Please note additional fees could be incurred for items such as leasehold packs.



1. MONEY LAUNDERING REGULATIONS Intending purchasers will be asked to produce identification documentation at a later stage and we would ask for your co-operation in order that there will be no delay in agreeing the sale. 2. These particulars do not constitute part or all of an offer or contract. 3. The measurements indicated are supplied for guidance only and as such must be considered incorrect. Potential buyers are advised to recheck measurements before committing to any expense. 4. We have not tested any apparatus, equipment, fixtures, fittings or services and it is in the buyers interest to check the working condition of any appliances.

Connells Residential is registered in England and Wales under company number 1489613, Registered Office is Cumbria House, 16-20 Hockliffe Street, Leighton Buzzard, Bedfordshire, LU7 1GN. VAT Registration Number is 500 2481 05.

**See all our properties at [www.connells.co.uk](http://www.connells.co.uk) | [www.rightmove.co.uk](http://www.rightmove.co.uk) | [www.zoopla.co.uk](http://www.zoopla.co.uk)**

Property Ref: MAI408698 - 0003