



Adam and Eve Mews

Kensington, W8

£1,425 per week
(£6,175 pcm)

A beautiful mews house with a garage located on this mews street located close to all amenities and transport links of Kensington High Street.



Adam and Eve Mews

Kensington, W8

- Fully refurbished pretty Mews House
- 3 Bedrooms, 2 Bathrooms, Open-plan Reception Room/Kitchen, Garage
- Generous sized open plan kitchen/living space, Garage and Utility Room
- Located in this pretty mews street just off High Street Kensington

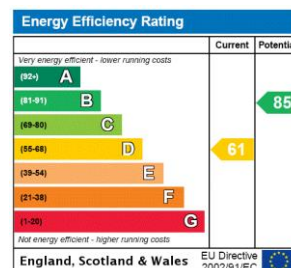


Beautiful, spacious, newly refurbished Mews house with garage situated on this pretty street just off Kensington High Street offering excellent connections to the transport links and amenities.

Accommodation comprises of an open plan kitchen and reception with wooden floors on the first floor. On the ground floor, you have a utility room, a Guest WC and a single bedroom/study. On the top floor you have two double bedrooms one with en-suite bathroom and there is another family bathroom. Both bedrooms offer fitted wardrobes. This property has been completely refurbished throughout and would make an ideal family home due to location and finish.

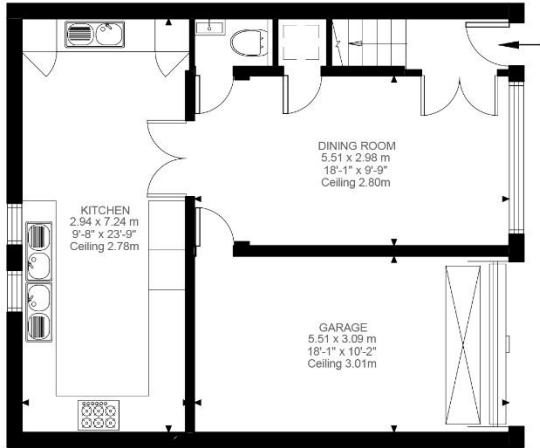
Tenure: To be advised
Unfurnished

Additional tenant charges apply (fees apply to non-AST tenancies only)
 Tenancy Agreement Fee: £300
 References per Tenant/Guarantor: £60
 Inventory check (approx. £100 – £250 inc. VAT)
[chestertons.com/property-to-rent/applicable-fees](https://www.chestertons.com/property-to-rent/applicable-fees)

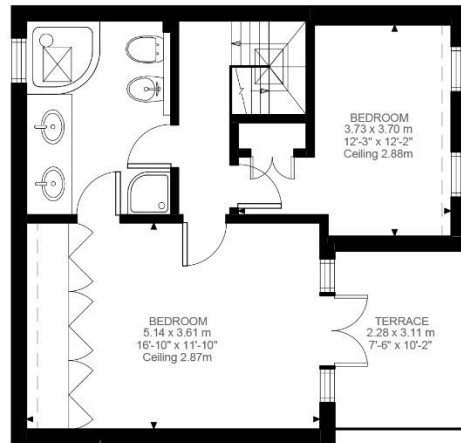


Chestertons Kensington Lettings

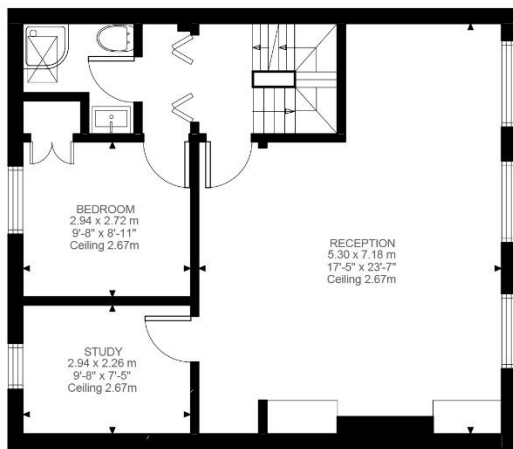
116 Kensington High Street
 Kensington
 London
 W8 7RW
lettings.kensington@chestertons.com
 02079377260
[chestertons.com](https://www.chestertons.com)



Ground Floor
670 ft²



Second Floor
493 ft²



First Floor
655 ft²

Adam And Eve Mews, W8

Approximate Gross Internal Area

168.87 SQ.M / 1818 SQ.FT

KEY: CH = Ceiling Height
Restricted Head Height

Illustration for identification purposes only. Not to scale.
Floor Plan Drawn According To RICS Guidelines.

