

TENTELOW LANE, NORWOOD GREEN



£399,950

A rare opportunity to purchase one of these charming, picture-postcard Victorian cottages situated in the heart of the Norwood Green Conservation Area, just moments from picturesque green spaces, waterside walks and highly regarded local schools. Extensively refurbished by the present owners, the property now boasts an unexpectedly spacious, beautifully calm and contemporary interior filled with light and stylish fittings and finishes. Features include; 2 double bedrooms, 2 open-plan reception rooms and a superb, modern fitted kitchen. Other benefits include the very stylish & contemporary first-floor shower room and a delightful, landscaped rear garden complete with large shed and handy side access.

TUFFIN & WREN

Independent Estate Agents



Further Information

For more details please call us on **020 8840 0993** or send an email to homes@tuffin-wren.co.uk.

Please note it is not our company policy to test services, heating systems and domestic appliances, therefore we cannot verify that they are in working order. Prospective purchasers are advised to obtain verification from their solicitors and/or surveyors.

Tentelow Lane

Approximate Gross Internal Area = 66.4 sq m / 715 sq ft
 Sheds = 10.1 sq m / 109 sq ft
 Total = 76.5 sq m / 824 sq ft

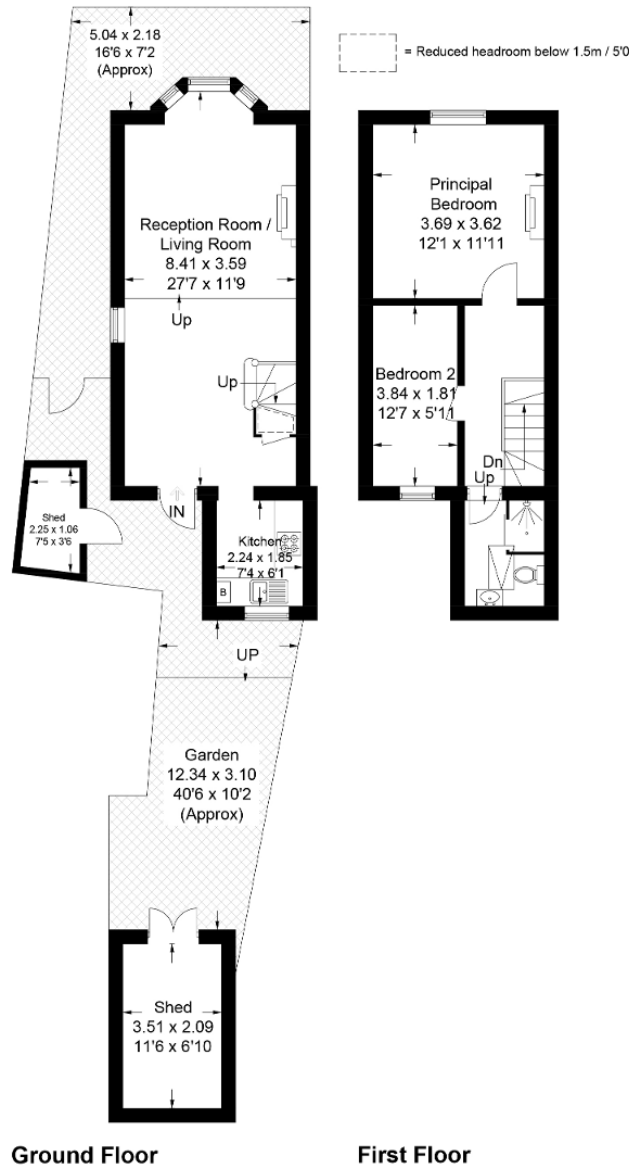
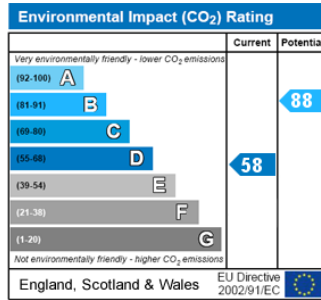
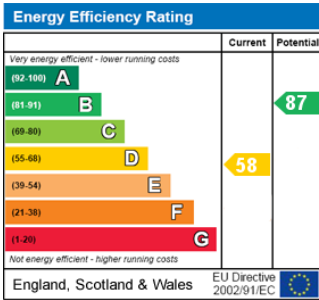


Illustration for identification purposes only,
 measurements are approximate, not to scale. (ID665217)

ENERGY PERFORMANCE RATING



Anti-Money Laundering Requirements

In accordance with the UK's Anti-Money Laundering Regulations, all prospective purchasers are required to complete identity verification and provide satisfactory evidence of source of funds prior to the progression of any transaction. Compliance with these requirements is mandatory and will be conducted on our behalf by Coadjute, our compliance partner. A one-off non-refundable fee of £45 + VAT is payable per applicant in respect of this verification process. Further details are available upon request.