



# Imperial Towers

17 Netherhall Gardens, NW3

£2,950 per month  
(£680.77 per week)

\*VIDEO TOUR AVAILABLE\*. A 2 double bedroom apartment on the 1st floor of this popular purpose built block benefiting from a small balcony, communal gardens, lift and day porter. The property is situated in an excellent location within walking distance to the Finchley Road (Jubilee Line) and within close proximity to the popular restaurants and shops of Hampstead Village (Northern Line). Accommodation comprises reception room opening out onto the balcony, fully fitted kitchen, 2 double bedrooms with fitted wardrobes, family bathroom, shower room. Sole Agent.

**CHESTERTONS**





# Imperial Towers

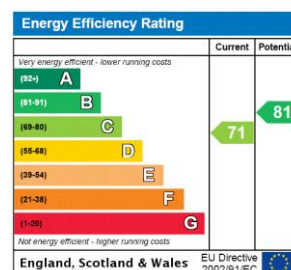
## 17 Netherhall Gardens, NW3

- A 1st Floor Apartment in Purpose Built Block
- 2 Bedrooms, 2 Bathrooms, Reception, Kitchen
- Small Balcony, Communal Gardens, Lift, Day Porter
- Excellent Location Walking Distance to Finchley Road (Jubilee Line), Close Proximity to the Restaurants/Shops of Hampstead Village (Northern Line)





**Minimum Term:** 12 months  
**Deposit Required:** £3,403.85  
**Local Authority:** London Borough Of Camden  
**Council Tax Band:** F  
**EPC Rating:** C  
**Furnished, Unfurnished**

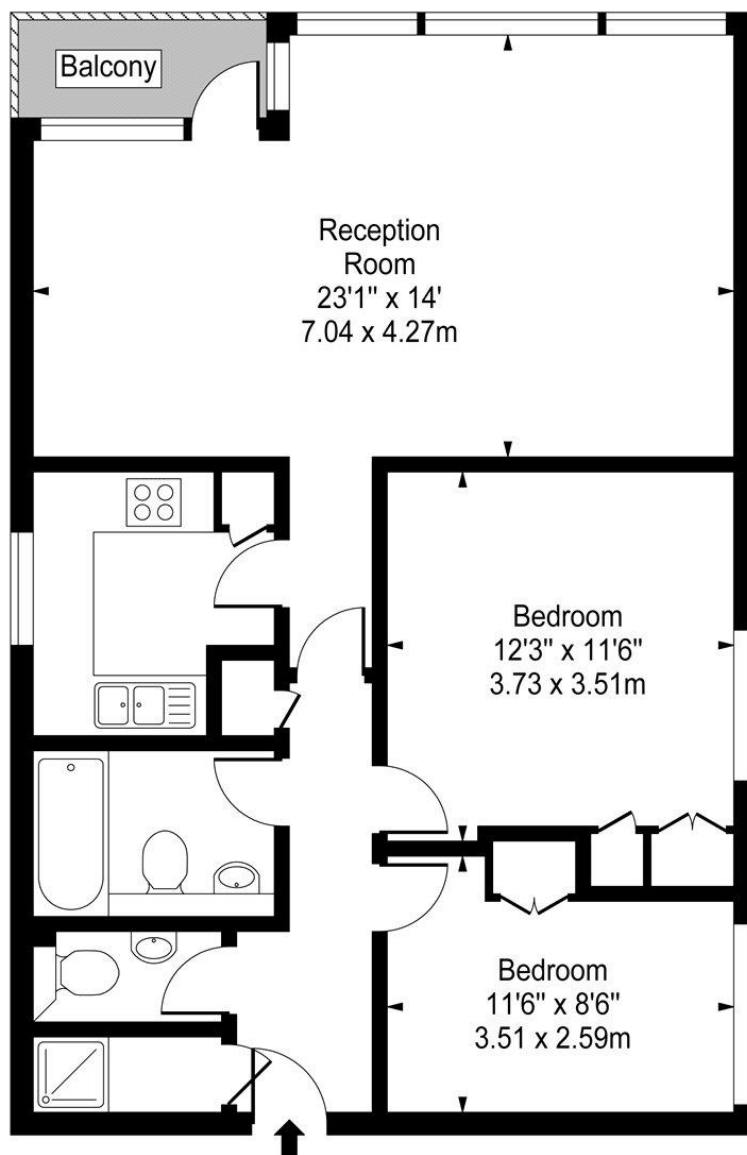
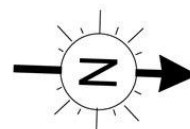


### *Chestertons Hampstead Lettings*

55-56 Hampstead High Street  
Hampstead  
London  
NW3 1QH  
hampsteadlettingsusers@chestertons.co.uk  
02077941125  
chestertons.co.uk

Additional tenant charges apply (fees apply to non-AST tenancies only)  
Tenancy Agreement Fee: £300  
References per Tenant/Guarantor: £60  
Inventory check (approx. £100 – £250 inc. VAT)  
chestertons.co.uk/property-to-rent/applicable-fees

# Imperial Towers, Netherhall Gardens, NW3



First Floor

**Approx Gross Internal Area 800 Sq Ft - 74.32 Sq M**

For Illustration Purposes Only - Not To Scale

[www.goldlens.co.uk](http://www.goldlens.co.uk)

Prepared for Chestertons

Ref. No. 007548N

