



**Connells**

Bridlington Crescent  
Monkston Milton Keynes



# Bridlington Crescent Monkston Milton Keynes MK10 9BU

for sale  
£600,000



## Property Description

Situated in a quiet location in the highly regarded Monkston area, Bridlington Crescent is a stylish and spacious four-bedroom family home that has been thoughtfully improved to offer comfortable, modern living throughout.

As you step inside, the home immediately feels welcoming. As you walk through the front door and into the spacious hallway the property provides a welcoming feel leading on to a well sized living area and kitchen/diner. At the rear, the conservatory adds an extra layer of living space - ideal for a quiet morning coffee, a reading corner, or simply enjoying the garden all year round. The kitchen is smart and well laid out, offering plenty of storage and worktop space, making it practical for both busy weekday routines and weekend cooking. Upstairs, the property offers four double bedrooms, including a master bedroom with its own ensuite, giving you a private and peaceful retreat. The remaining bedrooms are versatile and well-sized, suitable for children, guests, or a dedicated home office. One of the home's standout improvements is the partially converted garage, now used as a dedicated laundry room. This thoughtful upgrade provides a clean, organised space for washing, storage and household essentials, while still preserving useful external storage at the front. Outside, the enclosed rear garden is a lovely, manageable space - perfect for outdoor dining or simply relaxing after a long day. Beautifully maintained and offering a flexible layout.

## Cloakroom

Toilet Extractor, Sink, Window and Radiator

## Laundry Room

Freezer, Washing machine, tumble dryer, lots of varied storage and cupboard space.

## Kitchen

Kitchen Dryer, Gas hob and electric oven. Fridge. Island 2m approx. in length.

## Utility Room

Combi Boiler, Dishwasher and sink.

## Conservatory

Tiled

## Landing

Good size, airing cupboard including the water tank

## Bedroom 1

Built in wardrobe, Karndene flooring, window to the front

## En Suite

Shower, Toilet with sink in top, tiled, towel rail, window.

## Bedroom 2

Window to rear, Karndene Flooring

## Bedroom 3

Two windows to front, radiator, Karndene flooring

## Bedroom 4

Window to rear, radiator.

## Bathroom

Three-piece, towel rail, window.

## Rear Garden

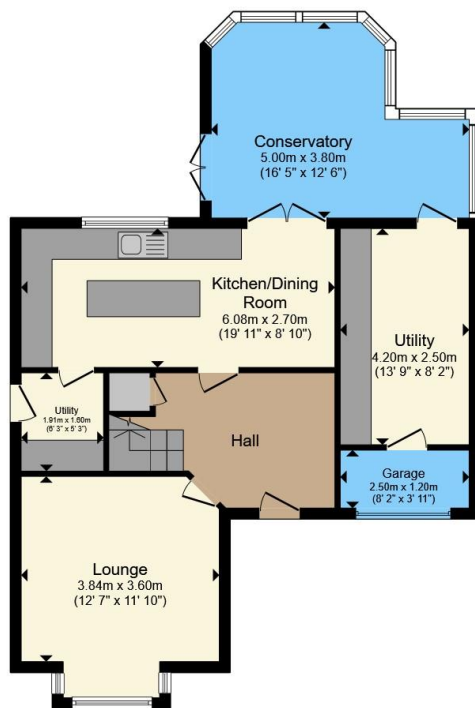
Grass, decking areas x 2.

## Living Room



Karndene Flooring, Bay window, Radiator





**Ground Floor**



**First Floor**

Total floor area 135.1 m<sup>2</sup> (1,455 sq.ft.) approx

This floor plan is for illustrative purposes only. It is not drawn to scale. Any measurements, floor areas (including any total floor area), openings and orientation are approximate. No details are guaranteed, they cannot be relied upon for any purpose and they do not form part of any agreement. No liability is taken for any error, omission or misstatement. A party must rely upon its own inspection(s). Powered by [www.propertybox.io](http://www.propertybox.io)

**Connells**



To view this property please contact Connells on

**T 01908 691606**

**E [walnuttree@connells.co.uk](mailto:walnuttree@connells.co.uk)**

26A Fyfield Barrow The Walnut Tree Local Centre Walnut Tree

EPC Rating: C Council Tax Band: E

**view this property online [connells.co.uk/Property/WNT307888](http://connells.co.uk/Property/WNT307888)**

Tenure: Freehold



1. MONEY LAUNDERING REGULATIONS Intending purchasers will be asked to produce identification documentation at a later stage and we would ask for your co-operation in order that there will be no delay in agreeing the sale. 2. These particulars do not constitute part or all of an offer or contract. 3. The measurements indicated are supplied for guidance only and as such must be considered incorrect. Potential buyers are advised to recheck measurements before committing to any expense. 4. We have not tested any apparatus, equipment, fixtures, fittings or services and it is in the buyers interest to check the working condition of any appliances.

Connells Residential is registered in England and Wales under company number 1489613, Registered Office is Cumbria House, 16-20 Hockliffe Street, Leighton Buzzard, Bedfordshire, LU7 1GN. VAT Registration Number is 500 2481 05.

**See all our properties at [www.connells.co.uk](http://www.connells.co.uk) | [www.rightmove.co.uk](http://www.rightmove.co.uk) | [www.zoopla.co.uk](http://www.zoopla.co.uk)**

Property Ref: WNT307888 - 0008