



## Lyell Street, E14

£3,000 Per calendar month

A large two bedroom apartment of this dockside development. This modern apartment has an open plan reception room, ample storage and a large private balcony with river views.

London City Island is moments from the shops, bars and restaurants of Canning Town, in addition to the popular Jubilee Line. On-site facilities include a twenty four hour concierge, residents gym, swimming pool and treatment rooms.

### Features

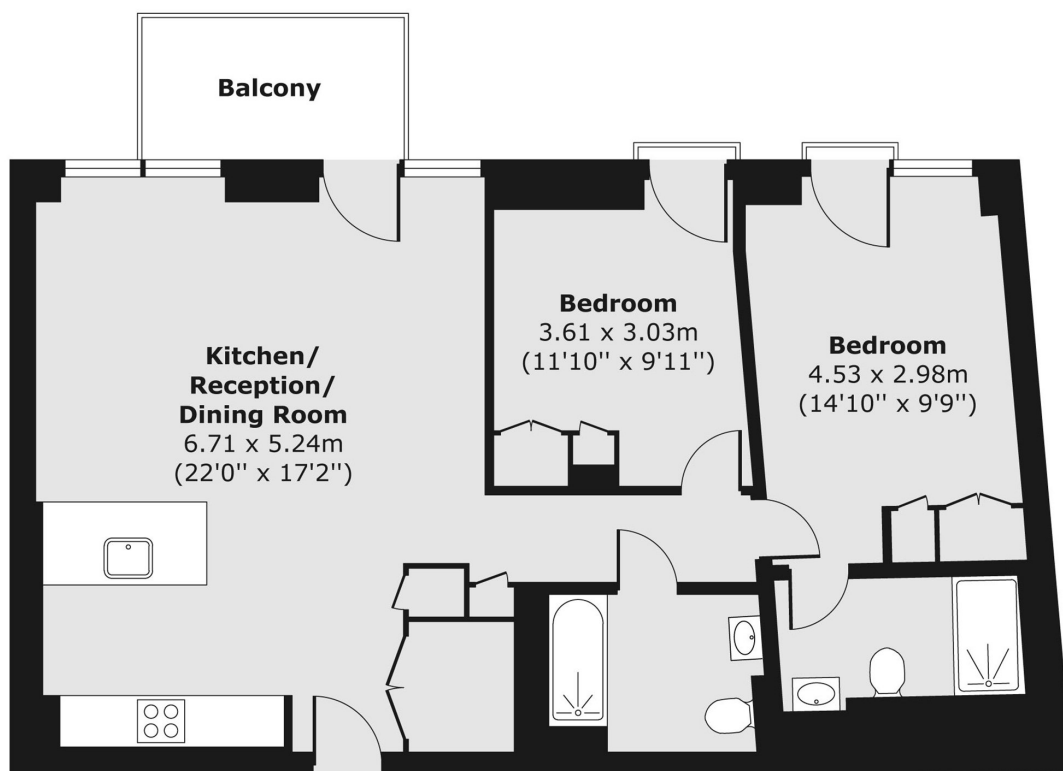
- Two Bedrooms
- Two Bathrooms
- Mid-Floor Position
- Large Private Balcony
- Concierge Service
- Gym, Pool & Spa Facilities



**Lyell Street, E14**



# Lyell Street, London, E14



Total area (approx.) 73.36 sq. m (790 sq. ft)  
Balcony area (approx.) 5.08 sq. m (55 sq. ft)