



GASKARTH ROAD, SW12

£1,500,000

Victorian Family Home
Close To Clapham Common
2,088 sq ft of Living Space
In Good Order Throughout
Generous Entertaining Space
Private Garden

@marshandparsons
marshandparsons.co.uk

MARSH &
PARSONS



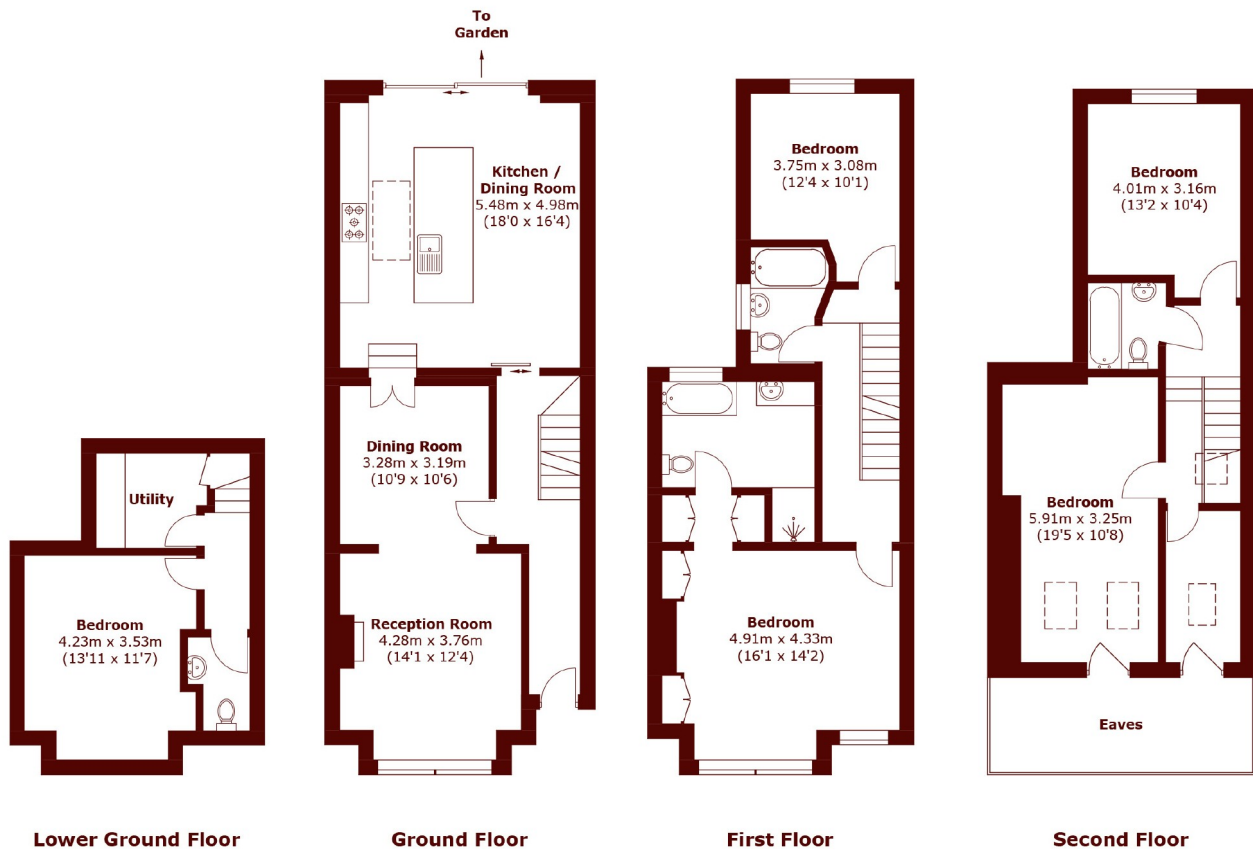
ABOUT THE PROPERTY

Beautifully extended five -bedroom Victorian home offering 2,088 sq ft of stylish living space moments from the open spaces of Clapham Common & Tube. Chain free.

Located on the highly sought-after Gaskarth Road, this elegant home is just a 3-minute walk from Clapham South Underground Station (Northern Line) and a short stroll from the wide open spaces of Clapham Common. Offering the perfect balance of city connectivity and outdoor lifestyle.



STEP INSIDE GASKARTH ROAD



Total area (approx.): 194.0 sq. m (2,088.0 sq. ft)
(Excluding Eaves)

Balham & Clapham South
020 7326 9920

Energy Rating: C We aim to make our particulars both accurate and reliable. However, they are not guaranteed; nor do they form part of an offer or contract. If you require clarification on any points then please contact us, especially if you're traveling some distance to view. Please note that appliances and heating systems have not been tested and therefore no warranties can be given as to their good working order

MARSH &
PARSONS