

Ron Leighton Way, E6

£325,000

Set within the sought-after Cornwell House development, this stylish one-bedroom apartment offers bright, modern living. The west-facing open-plan reception room and kitchen benefit from plenty of natural light and lead onto a private balcony.

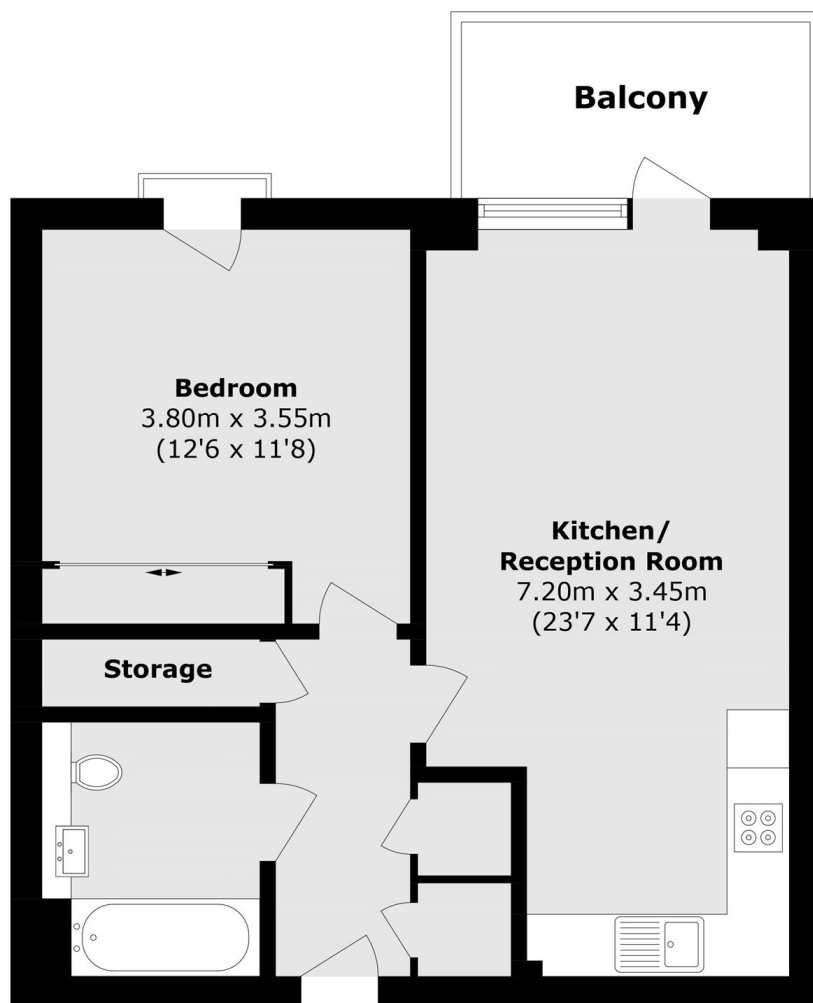
Further benefits include a spacious double bedroom, a modern bathroom, excellent energy efficiency, and the remainder of the NHBC warranty.

Cornwell House is conveniently located close to East Ham Station, providing direct access to the District and Hammersmith & City lines, while a wide range of shops, cafés, restaurants and local amenities are all within easy reach.

Features

- Spacious Double Bedroom
- Private West-Facing Balcony
- Natural Sunlight
- Open Plan Kitchen
- Ample Storage
- Modern Build

Ron Leighton Way, London, E6



Total area (approx.): 51.8 sq. m (557.5 sq. ft)

Balcony Total (approx.): 5.7 sq. m (61.3 sq. ft)