



**4 Bed
House - Detached
located in
Farmborough**

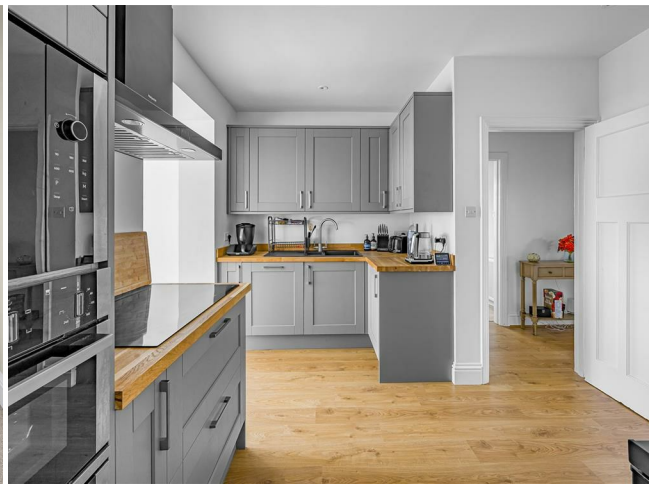
£3,000 Per Month



G R E G O R Y S
— E S T A T E A G E N T S —

Mollifrend House Bath
Road
Farmborough
Bath
BA2 0EG

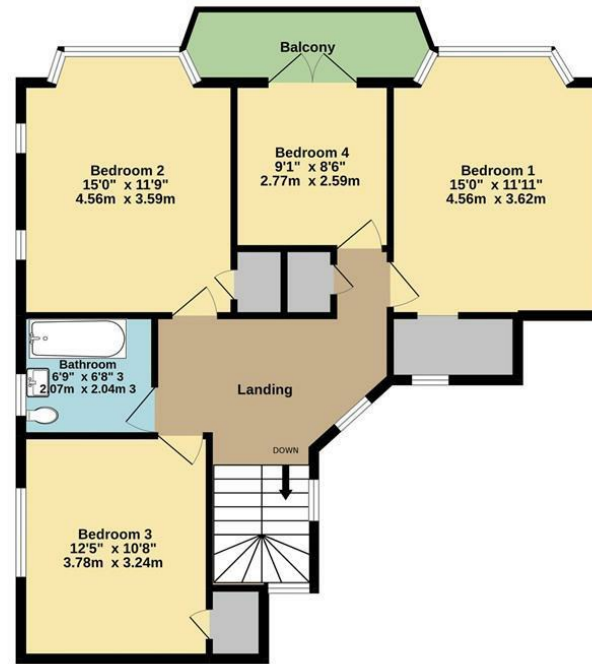




Ground Floor
1045 sq.ft. (97.0 sq.m.) approx.



1st Floor
802 sq.ft. (74.5 sq.m.) approx.



TOTAL FLOOR AREA : 1847 sq.ft. (171.6 sq.m.) approx.

Whilst every attempt has been made to ensure the accuracy of the floorplan contained here, measurements of doors, windows, rooms and any other items are approximate and no responsibility is taken for any error, omission or mis-statement. This plan is for illustrative purposes only and should be used as such by any prospective purchaser. The services, systems and appliances shown have not been tested and no guarantee as to their operability or efficiency can be given.
Made with Metropix ©2022.

Energy Efficiency Rating		Current	Potential
Very energy efficient - lower running costs			
(92 plus) A			92
(81-91) B			
(69-80) C			
(55-68) D			
(39-54) E		46	
(21-38) F			
(1-20) G			
Not energy efficient - higher running costs			
England & Wales		EU Directive 2002/91/EC	

DIRECTIONS

CONTACT

Unit 1 Market Walk
Keynsham
Bristol
BS31 1FS

E: enquiries@gregorys.click
T: 01179 866644
gregorys.click



GREGORYS
— ESTATE AGENTS —