



Copper Beech Way, Peterborough
£375,000 Freehold

**Sharman
Quinney**

Key Features



- Plenty of off-road parking
- Large Rear Garden
- Four Double Bedrooms
- Kitchen/Diner
- Lounge and Office Space

The property is set back from the road behind a huge private driveway, providing ample off-road parking for multiple vehicles and leading to a welcoming entrance. Internally, the home is well presented throughout and offers a practical layout with excellent room sizes.

The ground floor features a bright and spacious living area, perfect for both relaxing and entertaining, alongside a kitchen/diner with plenty of storage and workspace. A key highlight is the dedicated home office, ideal for remote working or use as a study or hobby room.

Bedroom accommodation is thoughtfully arranged over two floors, providing four generously sized bedrooms, allowing flexibility for family members, guests or additional workspace if required. The



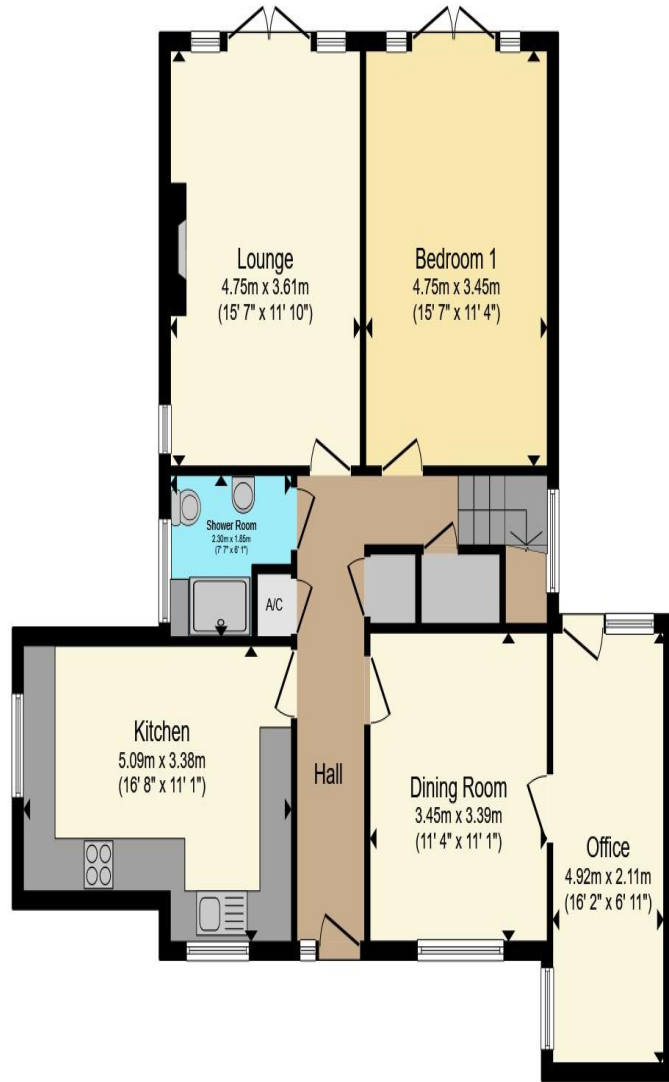
property also benefits from well-proportioned bathrooms, serving both floors conveniently.

Externally, the home truly shines with a large, private rear garden, offering an excellent space for outdoor dining, children to play or keen gardeners to enjoy. The garden provides a peaceful setting and plenty of potential for further landscaping or personalisation.

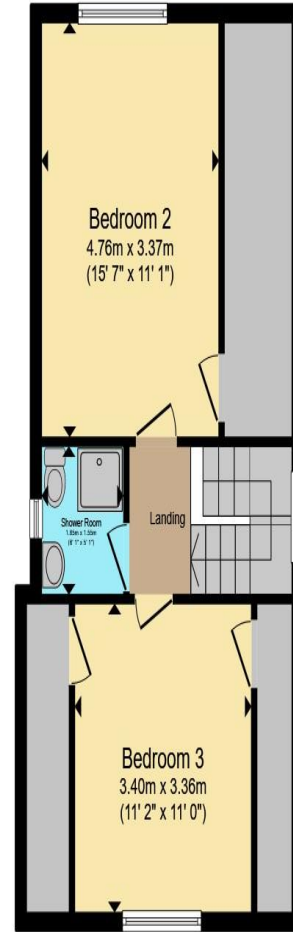
Located within easy reach of local amenities, schools and transport links, Copper Beech Way is a sought-after residential area offering both convenience and a strong sense of community.

Early viewing is highly recommended to fully appreciate the space, flexibility and excellent setting this chalet bungalow has to offer.





Ground Floor



First Floor

Total floor area 140.9 m² (1,516 sq.ft.) approx

This floor plan is for illustrative purposes only. It is not drawn to scale. Any measurements, floor areas (including any total floor area), openings and orientation are approximate. No details are guaranteed, they cannot be relied upon for any purpose and they do not form part of any agreement. No liability is taken for any error, omission or misstatement. A party must rely upon its own inspection(s). Powered by www.propertybox.io

**Sharman
Quinney**

To view this property call Sharman Quinney on:
01733 896222

Selling your property?

Contact us to arrange a **FREE** home valuation.

 01733 896222

 13 Desborough Avenue, Stanground,
PETERBOROUGH, Cambridgeshire, PE2 8RG

 stanground@sharmanquinney.co.uk

 www.sharmanquinney.co.uk



 SCAN ME



Sharman Quinney Holdings Limited is registered in England and Wales under company number 4174227, Registered Office is Cumbria House, 16-20 Hockliffe Street, Leighton Buzzard, Bedfordshire, LU7 1GN. VAT Registration Number is 500 2481 05.

1: These particulars do not constitute part or all of an offer or contract. 2: The measurements indicated are supplied for guidance only and as such must be considered incorrect. 3: Potential buyers are advised to recheck the measurements before committing to any expense. 4: Sharman Quinney has not tested any apparatus, equipment, fixtures, fittings or services and it is the buyers interests to check the working condition of any appliances. 5: Sharman Quinney has not sought to verify the legal title of the property and buyers must obtain verification from their legal representative. 6: Intending purchasers will be asked to produce identification documentation at a later stage and we would ask your co-operation in order that there will be no delay in agreeing the sale. Ref: SSQ204983 - 0001

