



Andrew J.
Dawson
Independent Estate Agents

South Park Road, Gatley

£550,000

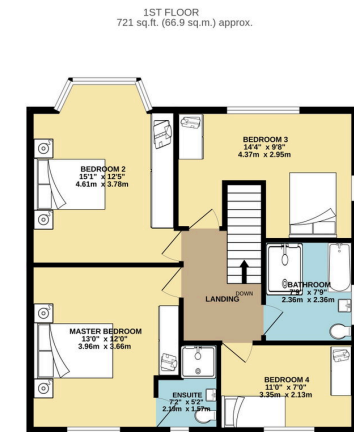
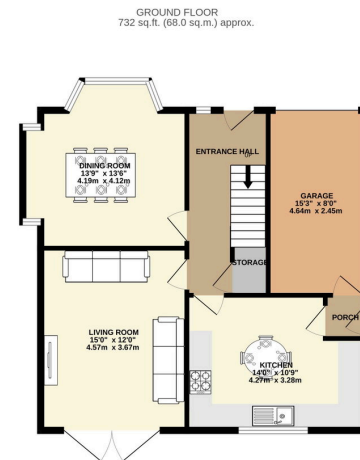
🛏 4 🚿 2 🚗 2

- Deatched Family Home.
- Four Double Bedrooms.
- Exceptional Master Suite with En Suite Shower Room.
- Beautiful Family Bathroom.
- Quiet Location Close to Central Gatley Village & Train Station.
- Two Spacious Reception Room with "Inglenook".
- Large Four Piece Family Bathroom Suite.
- Driveway & Garage.
- Beautiful Lawn Rear Gardens.
- EPC - D / Council Tax Band - E / Teunure - Freehold

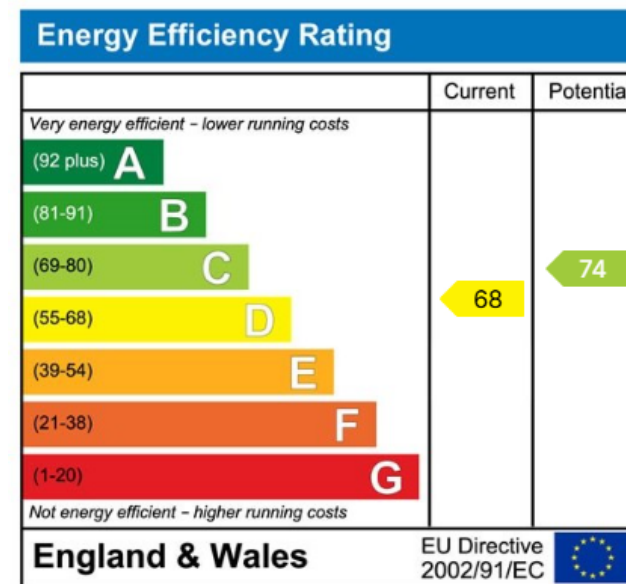


This is a spacious four-bedroom detached post-war home on South Park Road in Gatley, offering around 1,453 sq ft of versatile living space suited to family life. The ground floor features two reception rooms, including a front dining room with a bay window that brings in plenty of natural light, and a rear lounge with patio doors opening onto the garden, alongside a fitted kitchen with integrated appliances and a traditional Belfast sink. Upstairs are four well-proportioned bedrooms, with the main bedroom benefiting from an en suite shower room, plus a large family bathroom with both a bath and separate walk-in shower. Outside, the property includes a single garage, driveway parking, and a landscaped rear garden with multiple seating areas, providing a private and practical outdoor space for relaxing and entertaining.





TOTAL FLOOR AREA - 1453 sq.ft. (135.0 sq.m.) approx.
Whilst every attempt has been made to ensure the accuracy of the floorplan contained here, measurements of blocks, windows, rooms and any other items are approximate and no responsibility is taken for any error, omission or mis-statement. This plan is for illustrative purposes only and should be used as such by any prospective purchaser. The services, systems and appliances shown have not been tested and no guarantee as to their operability or efficiency can be given.
Made with Hergopec C200



9 Gatley Road, Cheadle, Cheshire SK8 1LY Tel. 0161 428 1488 Fax. 0161 428 1479
Email. mail@andrewdawson.co.uk