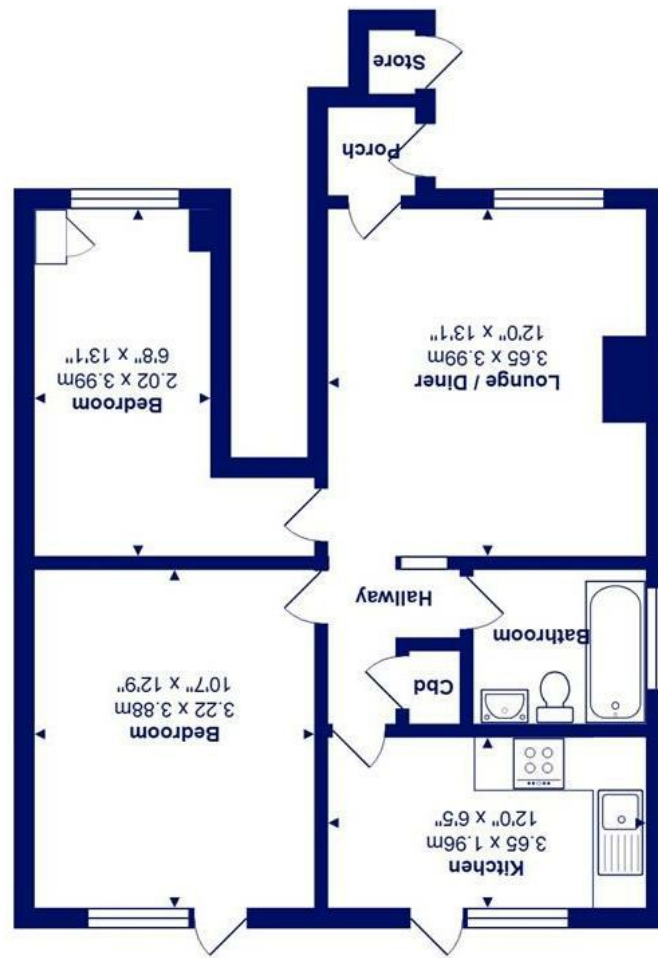




All measurements are approximate and for display purposes only
Total Area: 53.9 m² ... 580 ft²



14 Pittmore Road, Burton, BH23 7HB

£239,500

Mitchells
1963 — TODAY

A gorgeous, ground floor flat of nearly 600sq ft in excellent condition with a fantastic, private rear garden and situated in this quiet residential road in the village of Burton.

This lovely flat is ready to move into straight away and features stylish fittings throughout with recently refitted kitchen, modern bathroom and tasteful decor

- Purpose built ground floor flat
- Lovely, spacious lounge with picture window
- Modern refitted kitchen with access onto the garden
- Two double bedrooms
- Nice frontage and entrance porch
- Immaculate order inside and out
- Private rear garden with pergola and raised beds
- Gas heating and UPVC double glazing
- Lease 90 years remaining, Ground rent £260 pa

EPC Rating Band: C

Council Tax Band: B

Leasehold

Successful buyers will be required to complete online identity checks provided by Lifetime Legal. The cost of these checks is £49 inc. VAT per purchase which is paid in advance, directly to Lifetime Legal. This check verifies your identity in line with our obligations as stipulated by our regulatory body, HMRC

