



Parkway

Camden, NW1

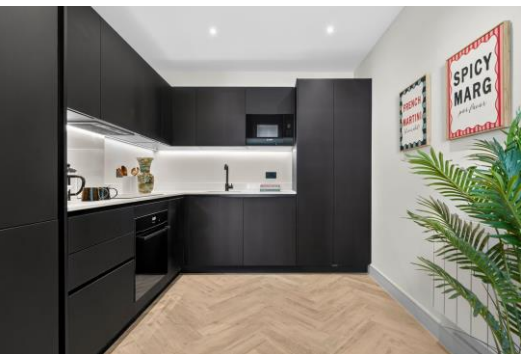
Asking Price £490,000

This stunning one bedroom apartment is situated on the first floor within this impressive period conversion, moments from Regent's Park. This wonderful property has just undergone a high quality refurbishment, and that includes the exterior and the communal areas. It's practically a new-build.

Accommodation comprises of a spacious reception leading into the stylish, fully fitted kitchen. It offers a spacious bedroom and well-equipped bathroom.

Long lease, chain-free and low service charges.

CHESTERTONS



Parkway

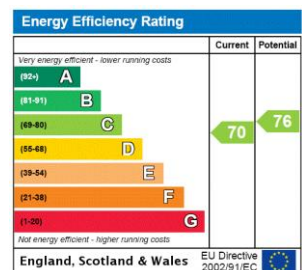
Camden, NW1

- First floor
- Beautifully presented
- Located in the heart of Camden Town
- Regents Park is only moments away
- Chain free
- Low service charges and 999 year lease



Parkway is ideally situated moments from all the fantastic amenities of Camden and close to Camden's underground station which services the Northern Line. The green open spaces of Regent's Park are in close proximity.

Tenure: Leasehold 999 years
Service Charge: Ad Hoc
Ground Rent: £0
Local Authority: Camden
Council Tax Band: D

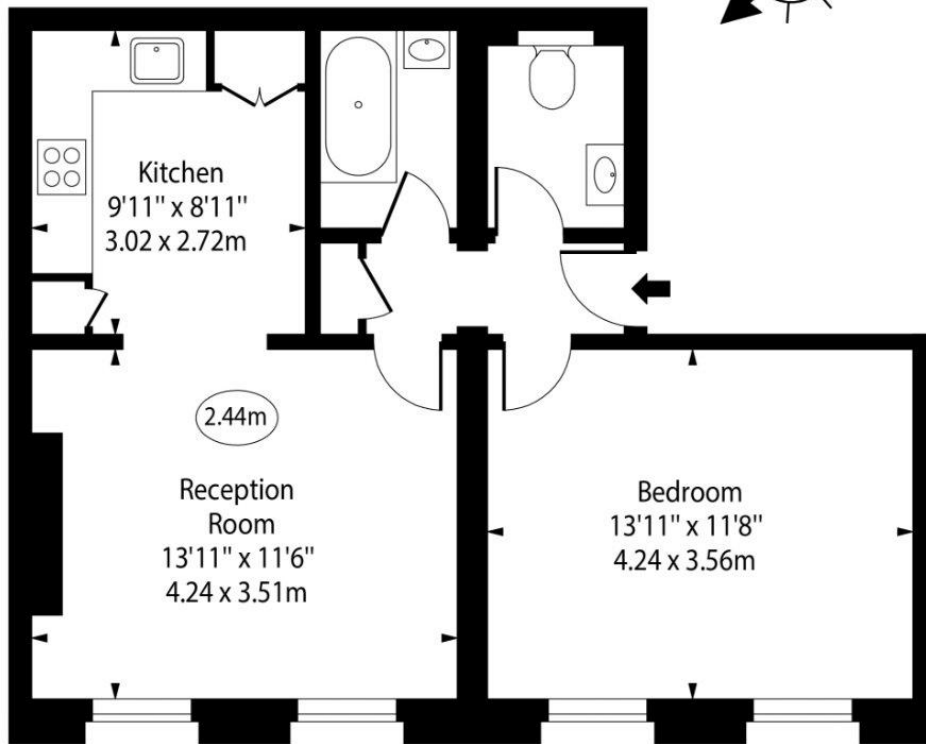


Chestertons Camden & Kentish Town Sales

99-101 Parkway
 Camden
 London
 NW1 7PP
 camden@chestertons.co.uk
 020 7267 2053
 chestertons.co.uk

Parkway

○ - Ceiling Height



First Floor

Gross Internal Area - 538 Sq Ft - 49.98 Sq M

Approx Gross Internal Area 538 Sq Ft - 49.38 Sq M

Every attempt has been made to ensure the accuracy of the floor plan shown. However, all measurements, fixtures, fittings, and data shown are approximate interpretations and for illustrative purposes only. Measured according to the RICS. Not To Scale.

www.goldlens.co.uk

Ref. No. 031242K

