

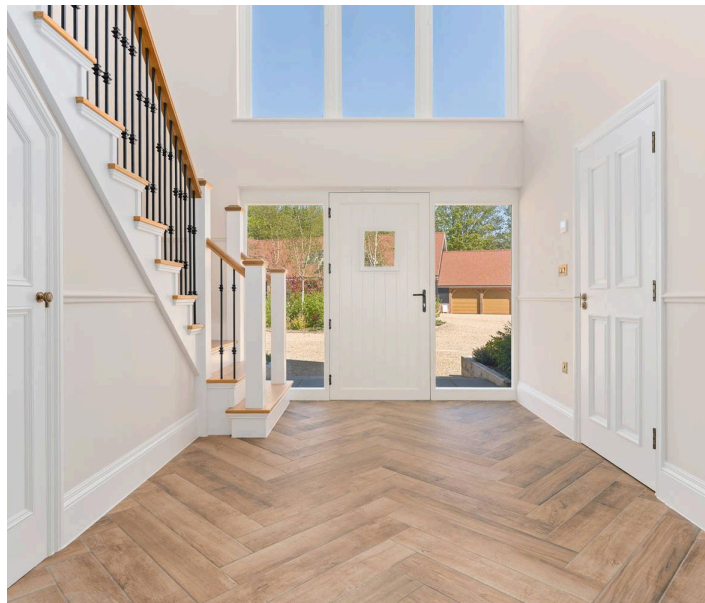
3 Bonningtons Yard Station Road

Takeley, Bishop's Stortford

Welcome to Bonningtons Yard. A beautiful five bedroom family home set within a private gated development of nine exclusive properties. With picturesque countryside views, five En-Suites, a double garage, plus attention to detail at every corner - this is a superb place to call home. Council Tax band: TBD

Tenure: Freehold

- Five double bedrooms
- Five En-Suites
- Double garage
- Utility Room
- Picturesque countryside views
- South west facing garden



Entrance Hallway
13' 8" x 12' 2" (4.16m x 3.70m)

WC

Living Room
20' 1" x 15' 3" (6.11m x 4.66m)

Kitchen / Diner
31' 6" x 25' 0" (9.59m x 7.61m)

Utility Room
15' 3" x 6' 4" (4.66m x 1.94m)

Primary Bedroom
29' 11" x 17' 2" (9.11m x 5.22m)

Ensuite Shower Room

Bedroom
17' 3" x 15' 3" (5.27m x 4.66m)

Ensuite Shower Room

Bedroom
15' 3" x 10' 2" (4.66m x 3.11m)

Ensuite Shower Room

Bedroom
15' 3" x 9' 1" (4.66m x 2.78m)

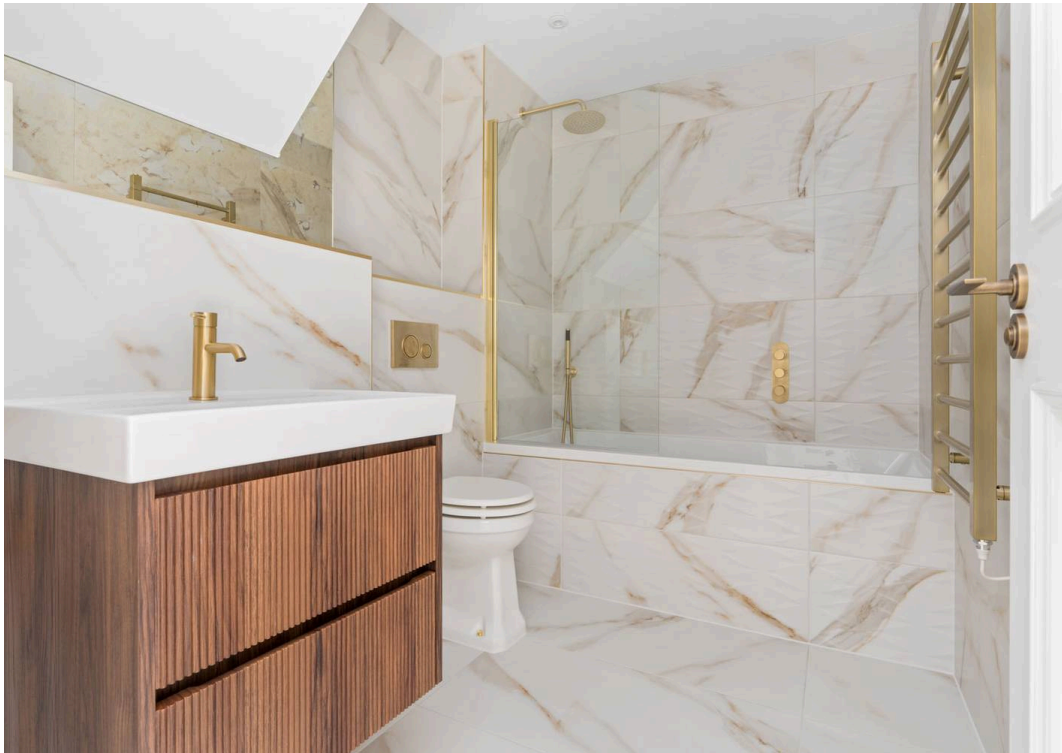
Ensuite Shower Room

Bedroom
15' 3" x 8' 11" (4.66m x 2.71m)

Ensuite Bathroom

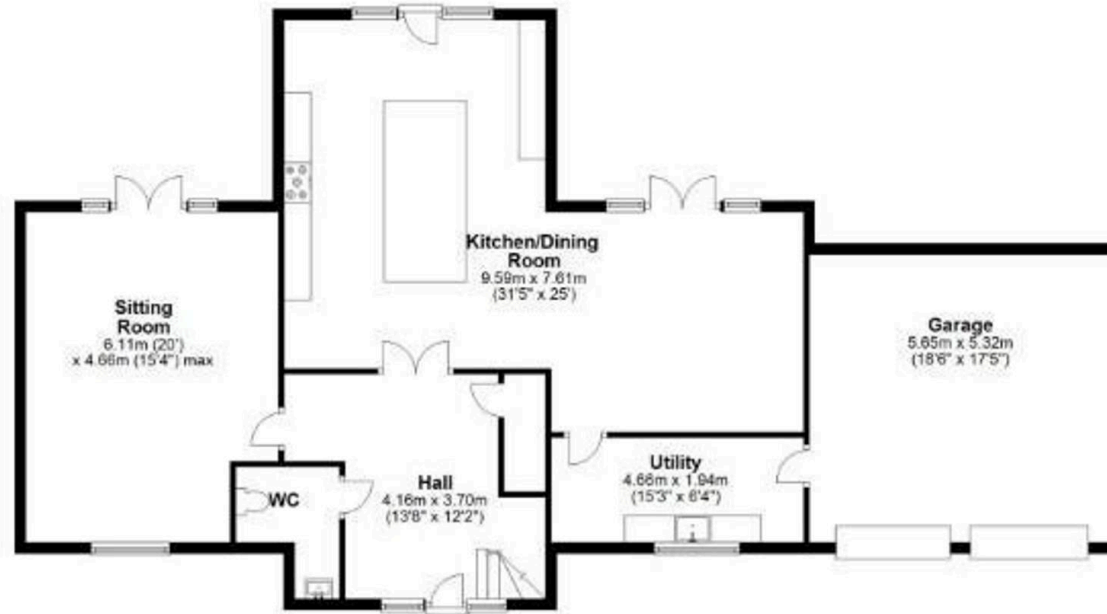
Internal Garage
18' 6" x 17' 5" (5.65m x 5.32m)





Ground Floor

Approx. 140.1 sq. metres (1508.4 sq. feet)



First Floor

Approx. 127.0 sq. metres (1366.6 sq. feet)



Total area: approx. 267.1 sq. metres (2874.9 sq. feet)