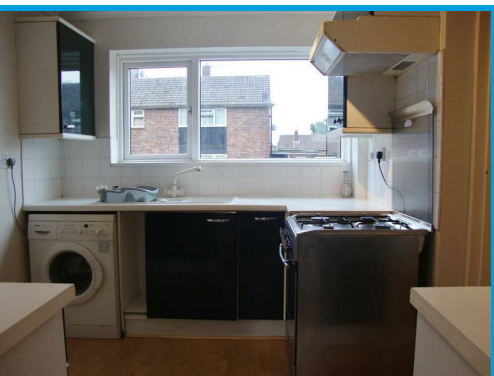




Rickyard, Guildford Surrey, GU2 8JR

£2,400 PCM

**** STUDENT ACCOMODATION 2026-2027 ACADEMIC YEAR**** Located within easy access of Surrey Research Park & Royal Surrey Hospital, this spacious three bedroom house is ideal for both students and sharers.



Description

**** STUDENT ACCOMODATION 2026-2027 ACADEMIC YEAR**** Located within easy access of Surrey Research Park & Royal Surrey Hospital, this spacious three bedroom house.

On the ground floor the property comprises a kitchen with appliances, utility room, reception room and lounge/ bedroom three.

Upstairs the property has three bedrooms and a bathroom with shower. Further features include a good size garden and off street parking.



Energy Efficiency Rating		
	Current	Potential
Very energy efficient - lower running costs		
(92 plus) A		
(81-91) B		
(69-80) C		
(55-68) D		
(39-54) E		
(21-38) F		
(1-10) G		
Not energy efficient - higher running costs		
England & Wales	66	87
EU Directive 2002/91/EC		

Environmental Impact (CO ₂) Rating		
	Current	Potential
Very environmentally friendly - lower CO ₂ emissions		
(92 plus) A		
(81-91) B		
(69-80) C		
(55-68) D		
(39-54) E		
(21-38) F		
(1-10) G		
Not environmentally friendly - higher CO ₂ emissions		
England & Wales	66	86
EU Directive 2002/91/EC		

