



Monmouth Way, Boverton

£250,000

- Extended end-of-terrace family home.
- Spacious open-plan kitchen/diner.
- Three bedrooms.
- Garden office ideal for home working.
- Garage and off-road parking.
- EPC Rating: D



 3  1  2



About the property

This significantly extended end-of-terrace home offers bright and versatile living accommodation in a sought-after residential location close to local amenities and the stunning coastline.

The ground floor centres around a generous open-plan kitchen/diner, creating the heart of the home and a perfect space for family life and entertaining. The living room provides a comfortable front reception, while a convenient cloakroom completes the ground floor. Upstairs are three bedrooms and a family bathroom, offering practical accommodation for families, couples or those needing additional workspace.

Externally, the landscaped rear garden features patio and decking areas with a covered pergola, creating excellent spaces for relaxing or entertaining. A standout feature is the detached garden office, providing an ideal work-from-home environment or hobby space. The property also benefits from a garage and additional off-road parking to the rear, with driveway parking to the front with space for multiple vehicles.





Accommodation

Entrance Porch

PVCu entrance door and front window. Storage shelving and hanging space. Door leading to the living room

Living Room

Spacious reception room with front window, laminate flooring and staircase to the first floor. Under-stairs storage cupboard and access to the kitchen/diner.

Kitchen / Diner

Extended open-plan space fitted with a range of wall and base units with wooden worktops and breakfast bar. Integrated double oven with microwave function, induction hob, extractor and dishwasher. Space for American-style fridge freezer and laundry appliances. Roof lantern and patio doors provide excellent natural light and access to the garden.

Lobby

Rear window with sliding door access from the kitchen/diner. Leads to cloakroom.

Cloakroom

Fitted with WC and wash hand basin with storage. Tiled walls and LVT flooring.

First Floor Landing

Carpeted with loft access via pull-down ladder. Doors to all bedrooms and bathroom.

Bedroom One

Double bedroom with front window, recessed storage area and wardrobe space.

Bedroom Two

Rear-facing bedroom with views over the extension's sedum roof and built-in shelving.

Bedroom Three

Front-facing bedroom ideal as a nursery, guest room or home office.

Bathroom

Fitted with a three-piece suite including shower bath with mains shower, WC and pedestal wash basin. Part-tiled walls and rear obscured window.

Outside

Garden Office

Detached garden office with patio doors, power, lighting and laminate flooring. Built to current building regulations and ideal for home working.

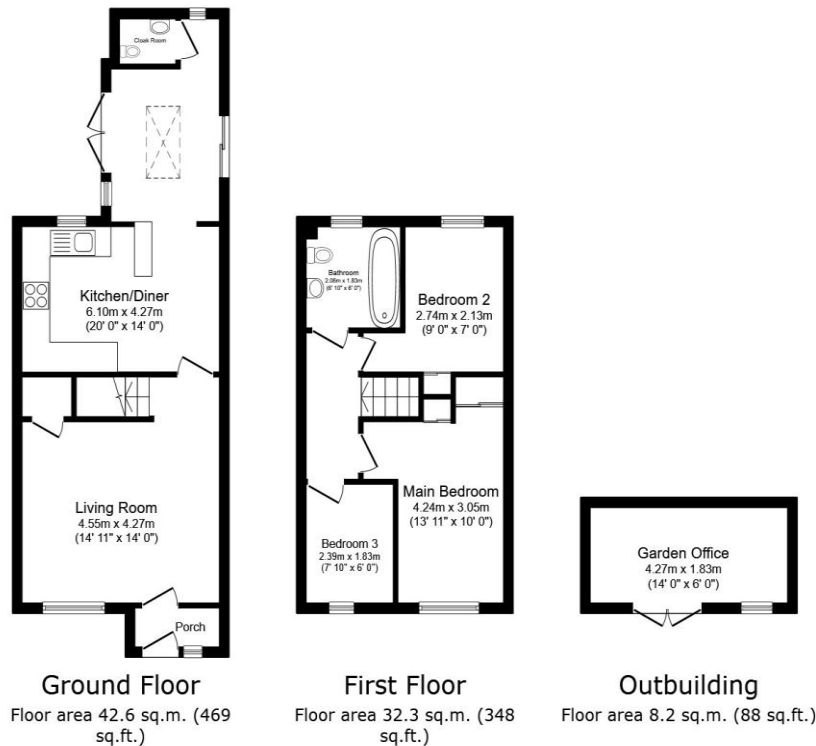
Rear Garden

Landscaped garden with patio, decking and covered pergola seating area. Raised beds and gated rear lane access.

Garage & Parking

Single garage located nearby with additional off-road parking space in front of the garage block.

Floorplan



Total floor area: 88 sq.m. (952 sq.ft.)

This floor plan is for illustrative purposes only. It is not drawn to scale. Any measurements, floor areas (including any total floor area), openings and orientations are approximate. No details are guaranteed, they cannot be relied upon for any purpose and do not form any part of any agreement. No liability is taken for any error, omission or misstatement. A party must rely upon its own inspection(s). Powered by www.Propertybox.io

Important Information

Note while we endeavour to make our sales details accurate and reliable, if there is any point which is of particular interest to you, please contact the office and we will be pleased to confirm the position for you. We have not personally tested any apparatus, equipment, fixtures, fittings or services and cannot verify they are in working order or fit for their purposes. Nothing in these particulars is intended to indicate that carpets or curtains, furnishings or fittings, electrical goods (whether wired or not), Gas fires or light fittings or any other fixtures not expressly included form part of the property offered for sale. This computer generated Floorplan, if applicable, is intended as a general guide to the layout and design of the property. It is not to scale and should not be relied upon for dimensions. Tenure: We cannot confirm the tenure of the property as we have not had access to the legal documents. The buyer is advised to obtain verification from their solicitor or surveyor.

Peter Alan Limited is registered in England and Wales under company number 2073153, Registered Office is Cumbria House, 16-20 Hockliffe Street, Leighton Buzzard, Bedfordshire, LU7 1GN. VAT Registration Number is 500 2481 05. For activities relating to regulated mortgages and non-investment insurance contracts, Peter Alan Limited is an appointed representative of Connells Limited which is authorised and regulated by the Financial Conduct Authority. Connells Limited's Financial Services Register number is 302221. Most buy-to-let