



**POOLE  
TOWNSEND**

46 Victoria Road,  
£245,000

4 1 2



- Immaculate Victorian Terrace • Stylish & Fitting Upgrades

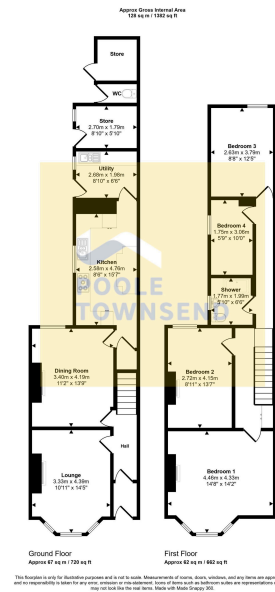
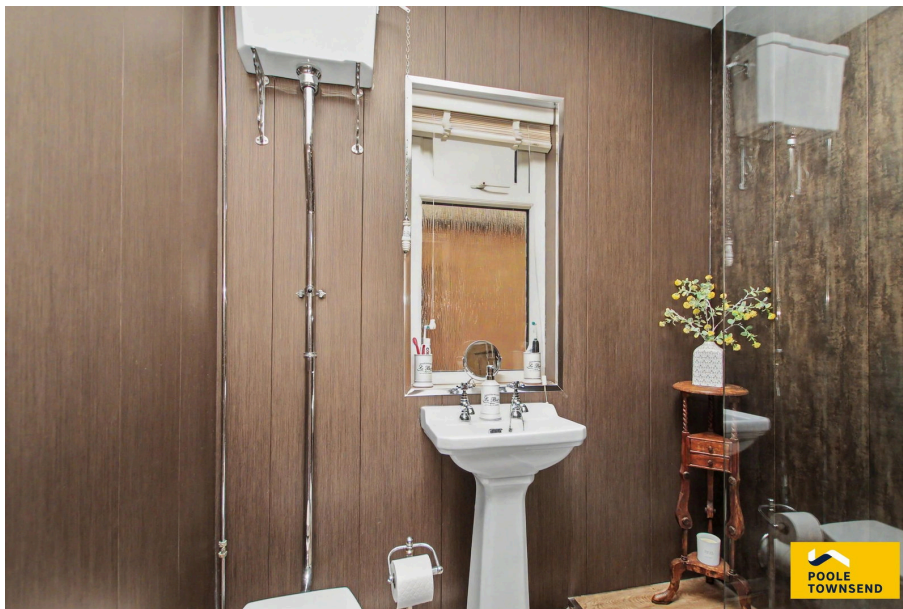
- Original Character Features
- Ground Floor WC

- Generous Kitchen & Utility Room
- Four Bedrooms (Three Doubles)

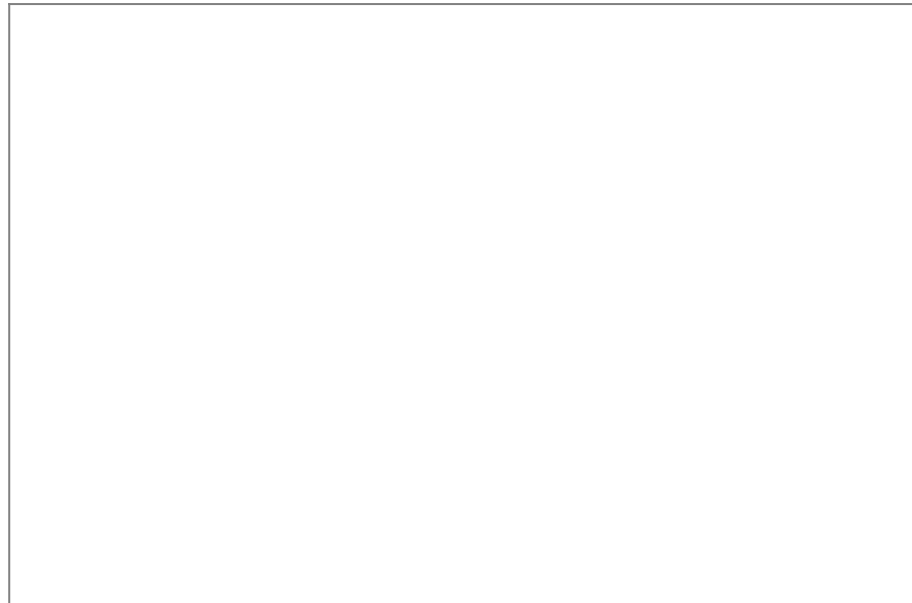
- Outdoor Storage
- Gas Central Heating & Double Glazing

- Close to all amenities
- EPC - to be confirmed





Occupying a slightly elevated position with an attractive forecourt, this immaculately presented Victorian terraced home beautifully combines period features with stylish modern upgrades. Offering spacious and versatile accommodation, the property includes two characterful reception rooms with feature fireplaces, a generous fitted kitchen with breakfast bar and integrated appliances, a separate utility room, four bedrooms, three of which are doubles, and a Victorian-inspired shower room. Outside, the enclosed rear yard has been thoughtfully landscaped and benefits from useful outbuildings, including store sheds and a WC. A superb family home offering charm, space and practicality in equal measure.



Visit us at  
[www.pooletownsend.co.uk](http://www.pooletownsend.co.uk)  
[enquiries@pooletownsend.co.uk](mailto:enquiries@pooletownsend.co.uk)

We are open  
 Monday – Friday 9.00 – 5.00  
 Saturday 9.00 – 1.00

Barrow 01229 811811  
 Ulverston 01229 588111  
 Grange 015395 33316  
 Kendal 01539 734455  
 Milnthorpe 015395 62044