



PER CALENDAR MONTH
£995 Per Calendar Month
Signet Square
Coventry, CV2 4NZ

PROPERTY SUMMARY

A Spacious and executive, two bedroom apartment close to the town centre. Comprising good sized, bright lounge/ diner, modern fitted kitchen with appliances. There are two double bedrooms and a bathroom. The property is offered unfurnished, has allocated off road parking and is available mid June.

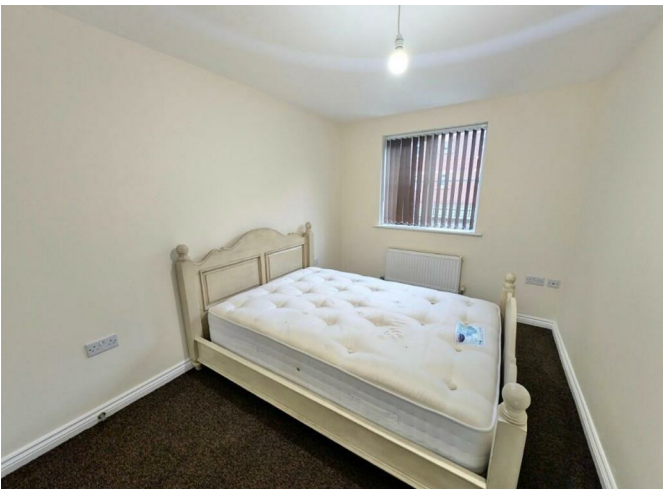
2

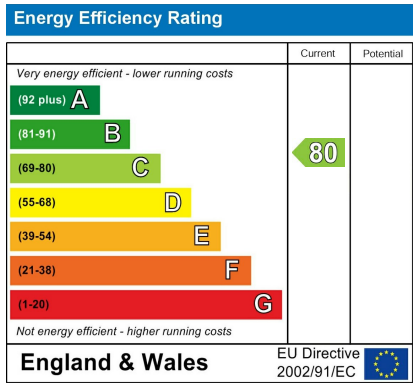


1



1





Agents Note: Whilst every care has been taken to prepare these particulars, they are for guidance purposes only. All measurements are approximate and are for general guidance purposes only and whilst every care has been taken to ensure their accuracy, they should not be relied upon and potential buyers/tenants are advised to recheck the measurements



OFFICE ADDRESS
 8a Regent Street
 Leamington Spa
 Warwickshire
 CV32 5HO

OFFICE DETAILS
 01926 354 400
 leamington@handlesproperty.co.uk