

Grove End Road, NW8

£1,150,000

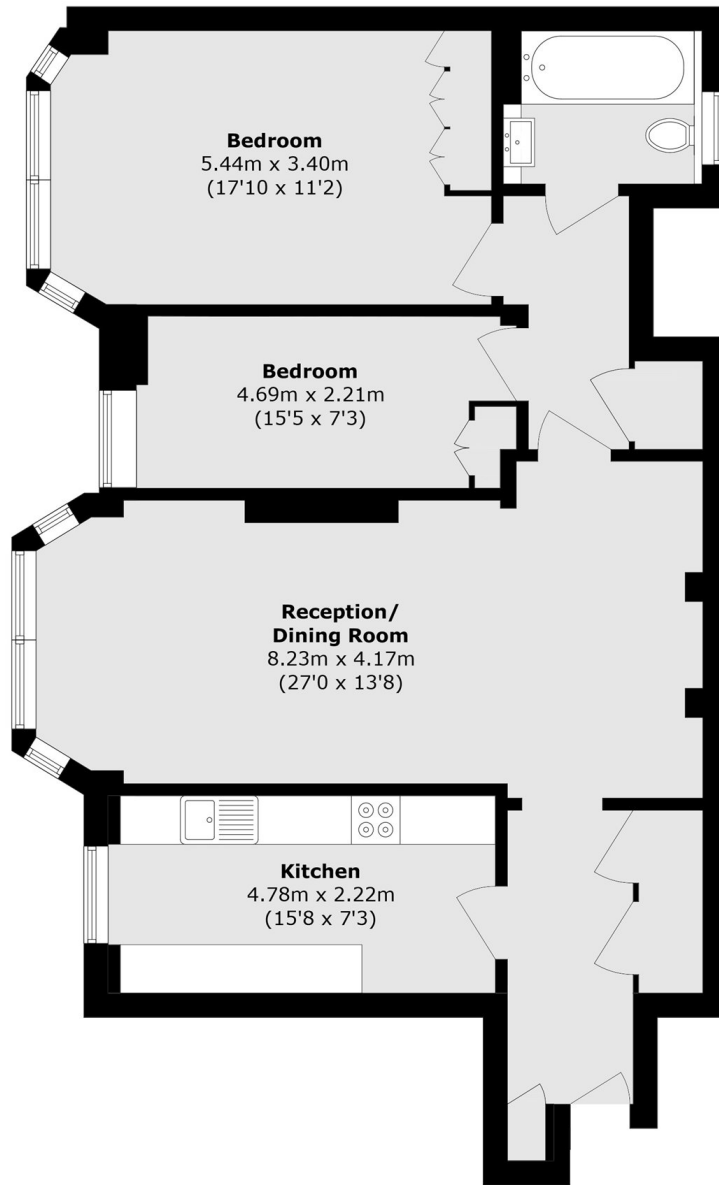
Occupying approximately 1,000 sq ft, this elegant two double bedroom apartment is presented in good condition and features impressive high ceilings throughout. The property benefits from a porter, off street parking, and a share of freehold.

Grove Court is ideally positioned in the heart of St John's Wood, moments from the boutiques, cafés, and restaurants of the High Street. Regent's Park and Lord's Cricket Ground are both within easy reach. Transport links include St John's Wood underground station (Jubilee line) and Maida Vale underground station (Bakerloo line).

Features

- Two Double Bedrooms
- Chain Free
- Share of Freehold
- Porter
- Parking
- Lift

Grove End Road, London, NW8



Total area (approx.): 91.3 sq. m (982.7 sq. ft)