



Topmast Point, E14

£350,000

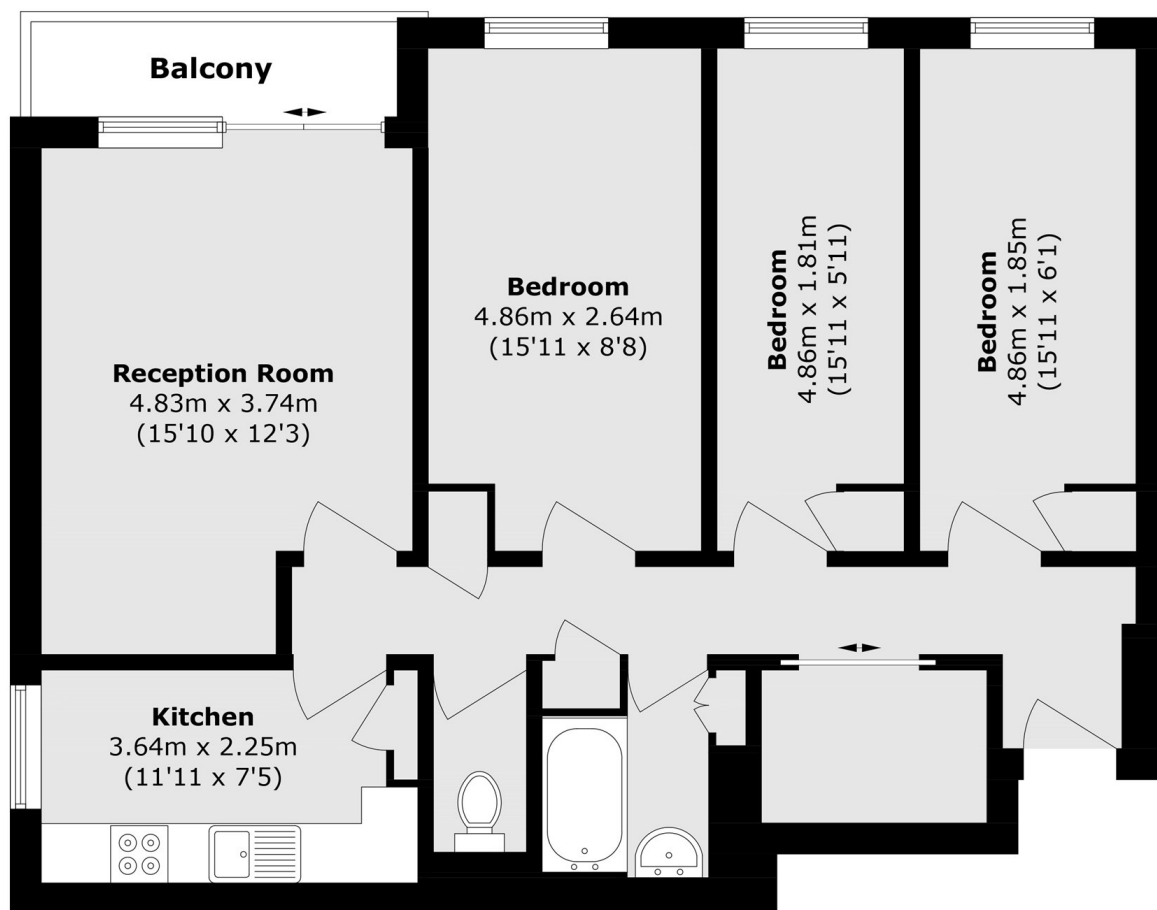
Situated conveniently on Westferry Road, we are pleased to present this three-bedroom apartment within the Quarterdeck development. The property benefits from a balcony accessed via the reception room, a secure entry phone system, and close proximity to a range of local amenities.

The Quarterdeck is ideally located for access to Canary Wharf, just 0.8 miles away, and benefits from a wide range of nearby amenities including pubs, grocery stores, restaurants, and more. South Quay DLR is approximately 0.7 miles away, providing convenient access into the City and beyond.

Features

- Three Bedrooms
- Private Balcony
- Secure Entry Phone system
- Conveniently Situated
- Short Walk To Thames Path
- 844 Square Feet

Topmast Point, London, E14



Twelfth Floor

Total area (approx.): 78.5 sq. m (844.9 sq. ft)

Balcony area (approx.): 3.2 sq. m (34.4 sq. ft)