



Channel Close, TW5

£369,950

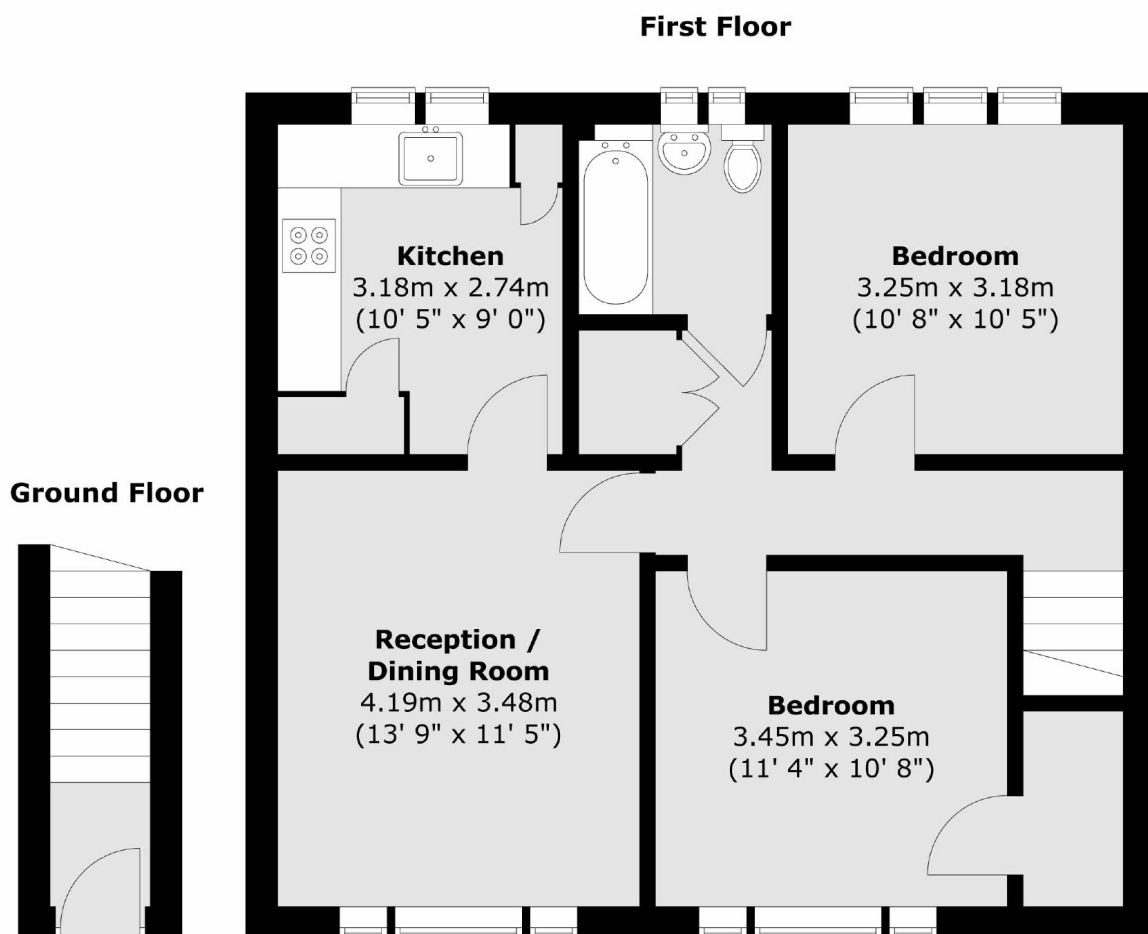
We are delighted to bring to the market this end of terrace first floor apartment. Offering almost 700 square feet of generous living space, this lovely apartment comprises of two double bedrooms, separate kitchen, reception room, stunning landscaped communal gardens, large loft space and separate garage. The property further benefits from low service charges and peppercorn ground rent.

Channel Close is a short walk away from the Osterley Tube Station, Osterley Park as well as easy accessible to A4/M4. Local shops, outstanding schools and cafés are all around the corner from this property.

Features

- End Of Terrace Maisonette
- Two Double Bedrooms
- Communal Gardens
- Low Service Charge
- Loft Space
- Garage

Channel Close, Hounslow, TW5



Total area (approx.) : 64.5 sq. m (694 sq. ft)