



282 Beaver Road

Ashford, TN23 7SP

£1,350 Per Month

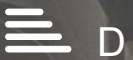
Period style three bedroom mid terrace house with good sized rear garden, within easy walking distance of mainline station and Town Centre. To the ground floor the property comprises sitting room, dining room, kitchen and bathroom. To the first floor three good size bedrooms.

Available End of June
Security deposit £1557
Council tax band B
EPC rating D

Viewing

Please contact our Ashford Office on 01233 646411 if you wish to arrange a viewing appointment for this property or require further information.

- THREE BEDROOM HOUSE
- TWO RECEPTION ROOMS
- AVAILABLE END JUNR
- ENCLOSED REAR GARDEN
- CONVENIENT TO STATION
- EPC RATING D
- COUNCIL TAX BAND B
- SECURITY DEPOSIT £1557.00



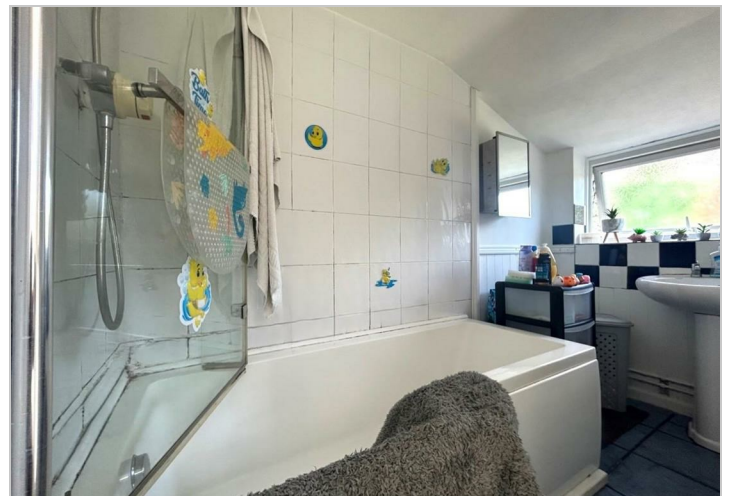
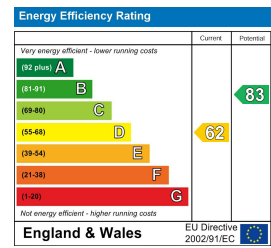
Floor Plan



Area Map



Energy Efficiency Graph



These particulars, whilst believed to be accurate are set out as a general outline only for guidance and do not constitute any part of an offer or contract. Intending purchasers should not rely on them as statements of representation of fact, but must satisfy themselves by inspection or otherwise as to their accuracy. No person in this firm's employment has the authority to make or give any representation or warranty in respect of the property.