



Connells

Morse Way
Desborough Kettering

Morse Way Desborough Kettering NN14 2GL

for sale offers in excess of
£300,000



Property Description

This beautifully presented three-bedroom detached property is situated in the sought-after town of Desborough, offering modern living in a convenient location. The home benefits from a private driveway, garage, and an enclosed rear garden, making it ideal for families or those seeking extra space.

Step into a welcoming hallway that leads to a spacious living room with a bay window, creating a bright and inviting atmosphere. To the rear, you'll find an open-plan kitchen and dining area, perfect for entertaining and family meals, with direct access to the garden. A convenient ground-floor WC completes this level.

Upstairs, the property boasts three well-proportioned bedrooms. The primary bedroom features its own en-suite shower room, while the remaining two bedrooms share a modern family bathroom.

Externally, the property offers a driveway and garage for off-road parking, and a fully enclosed rear garden, providing a safe and private outdoor space for relaxation or play.

Ground Floor

Entrance Hall

Entrance door to the front, stairs leading to the first floor, under stairs storage cupboard.

Cloakroom

Wash hand basin, low level WC.

Living Room

16' 6" x 10' 6" (5.03m x 3.20m)

Bay window to the front, feature fire place with surround, radiator, carpet flooring.

Dining Area

15' 1" x 8' 8" (4.60m x 2.64m)

French patio doors to the rear, radiator, laminate flooring.

Kitchen

15' 1" x 12' 1" (4.60m x 3.68m)

Window to the rear, external door to the side, a range of wall and base units with rolled edge work surfaces, 1.5 sink drainer with mixer tap, integrated oven and hob with cooker hood, tiled splash areas, laminate flooring, vinyl flooring, radiator.

First Floor

Landing

Storage cupboard

Bedroom One

11' 9" x 10' 6" (3.58m x 3.20m)

Window to the front, radiator, carpet flooring.

Ensuite

Walk in shower cubicle, wash hand basin, low level WC.

Bedroom Two

10' 9" x 10' 6" (3.28m x 3.20m)

Window to the rear, radiator, carpet flooring.

Bedroom Three

10' 8" x 7' 6" (3.25m x 2.29m)

Window to the rear, carpet flooring, radiator.

Bathroom

Window to the front, bath with shower over, wash hand basin, low level WC, extractor fan, tiled splash areas.

Externally

Garage And Driveway

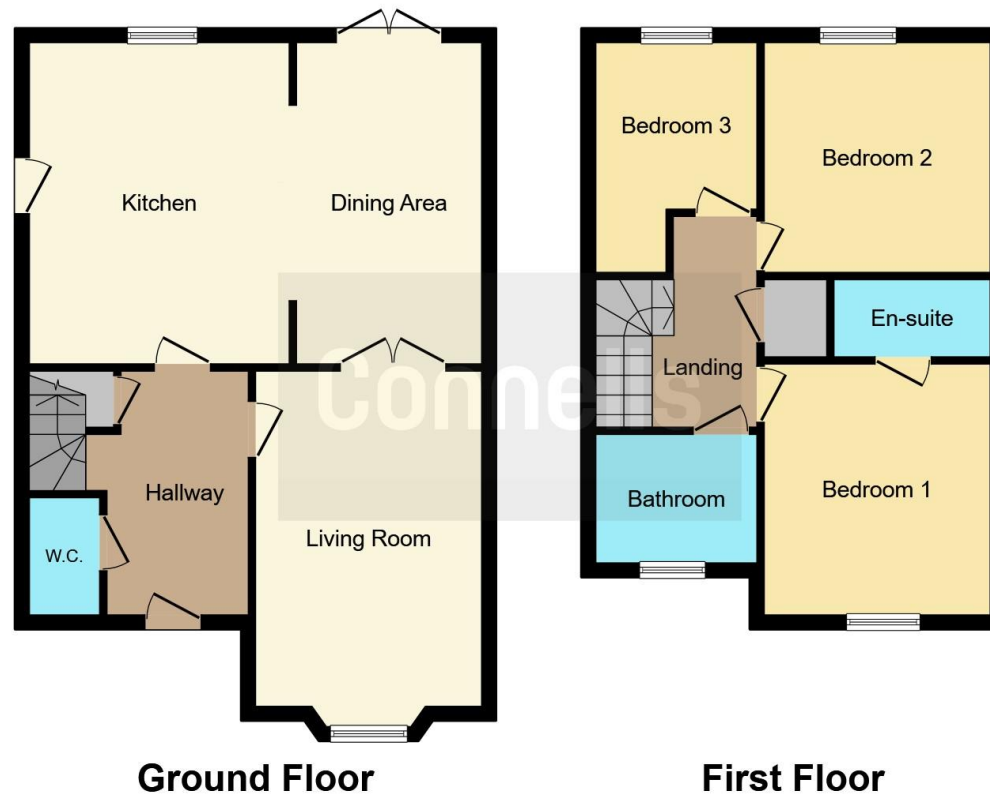
Rear Garden

Fully enclosed by timber fencing, gated side access, slab patio, artificial grass area, flower beds, timber shed.









This floor plan is for illustrative purposes only. It is not drawn to scale. Any measurements, floor areas (including any total floor area), openings and orientation are approximate. No details are guaranteed, they cannot be relied upon for any purpose and they do not form part of any agreement. No liability is taken for any error, omission or misstatement. A party must rely upon its own inspection(s). Powered by www.focalagent.com

To view this property please contact Connells on

T 01536 411 811
E kettering@connells.co.uk

5 Montagu Street
 KETTERING NN16 8XG

EPC Rating: C Council Tax
 Band: D

Tenure: Freehold

view this property online connells.co.uk/Property/KTT308536



1. MONEY LAUNDERING REGULATIONS Intending purchasers will be asked to produce identification documentation at a later stage and we would ask for your co-operation in order that there will be no delay in agreeing the sale. 2. These particulars do not constitute part or all of an offer or contract. 3. The measurements indicated are supplied for guidance only and as such must be considered incorrect. Potential buyers are advised to recheck measurements before committing to any expense. 4. We have not tested any apparatus, equipment, fixtures, fittings or services and it is in the buyers interest to check the working condition of any appliances.

Connells Residential is registered in England and Wales under company number 1489613, Registered Office is Cumbria House, 16-20 Hockliffe Street, Leighton Buzzard, Bedfordshire, LU7 1GN. VAT Registration Number is 500 2481 05.

See all our properties at www.connells.co.uk | www.rightmove.co.uk | www.zoopla.co.uk

Property Ref: KTT308536 - 0003