

24 Sunnyside Road

Epping, Epping

Council Tax band: D

Tenure: Freehold

- Beautifully designed
- Driveway
- Ground floor bathroom / utility room
- Spacious garden room / gym
- Private spacious rear garden
- Ivy Chimneys school catchment
- Short walk to Epping tube station



Hammond
& Smith

Hallway

Kitchen

8' 6" x 10' 6" (2.58m x 3.19m)

Breakfast Room

9' 5" x 12' 0" (2.86m x 3.65m)

Living Room

11' 1" x 19' 3" (3.37m x 5.88m)

Bathroom / Utility Room

Bedroom

12' 7" x 12' 0" (3.83m x 3.65m)

Bedroom

11' 0" x 10' 6" (3.36m x 3.19m)

Bedroom

7' 2" x 10' 6" (2.19m x 3.19m)

Bedroom

11' 0" x 8' 7" (3.36m x 2.61m)

Bathroom

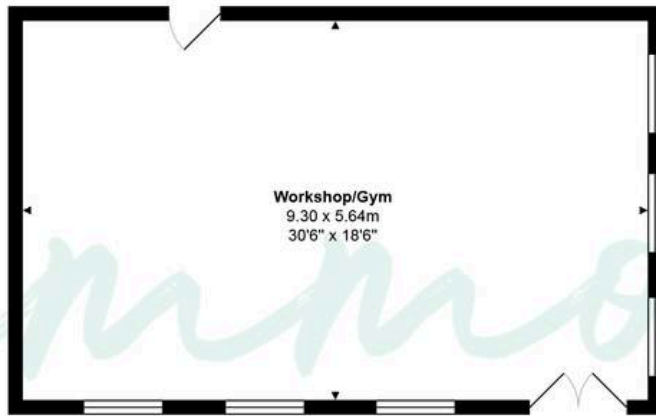
Garden Room (Gym / Workshop)

30' 6" x 18' 6" (9.30m x 5.64m)

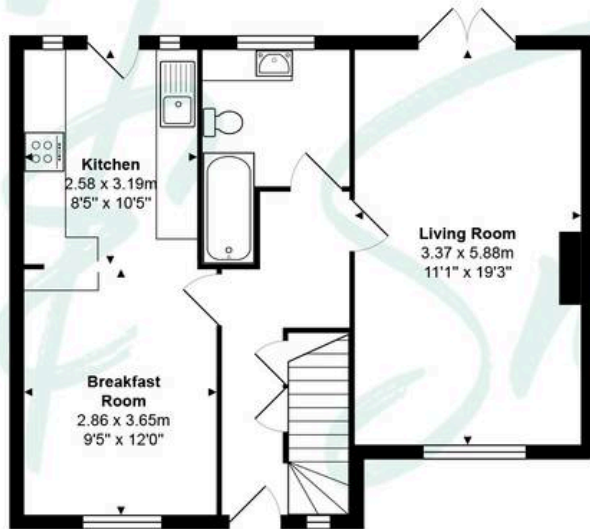




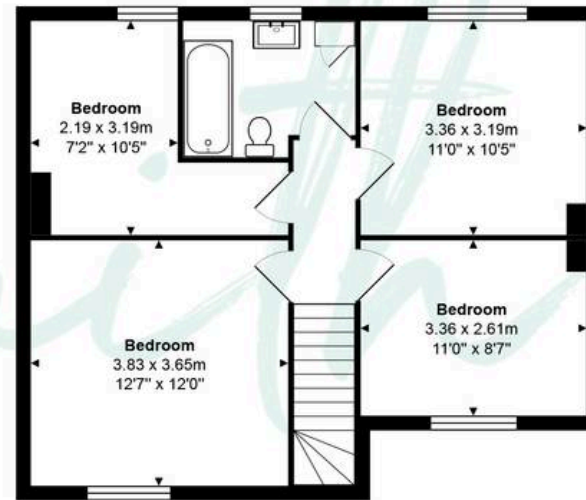
Hammond



Outbuilding



Ground Floor



First Floor

Total Area: approx. 159.9 m² ... 1721 ft²

THE FLOORPLAN IS FOR ILLUSTRATIVE PURPOSES ONLY AND IS NOT TO SCALE.
Measurements and features are approximate and may differ from the actual property. Verify all details independently; no liability is accepted for errors or omissions.

Property marketing provided by www.fotomarketing.co.uk