



Elswick Road, SE13

£2,600 Per calendar month

Refurbished from the ground up is this charming end of terrace Victorian family home. The ground floor offers a bright double reception room, a fully fitted kitchen, and a separate utility room with a W.C, all leading to an easily maintained private garden.

Upstairs you'll find the modern bathroom, spacious principle bedroom and two further bedrooms. The property benefits from brand new double glazing windows and hard wood floor throughout.

Elswick Road is perfectly positioned for the shops and amenities Lewisham has to offer. Lewisham Railway & DLR is within easy reach providing frequent rail links into the city. The green spaces of Brookmill park and Hilly fields are nearby.

Features

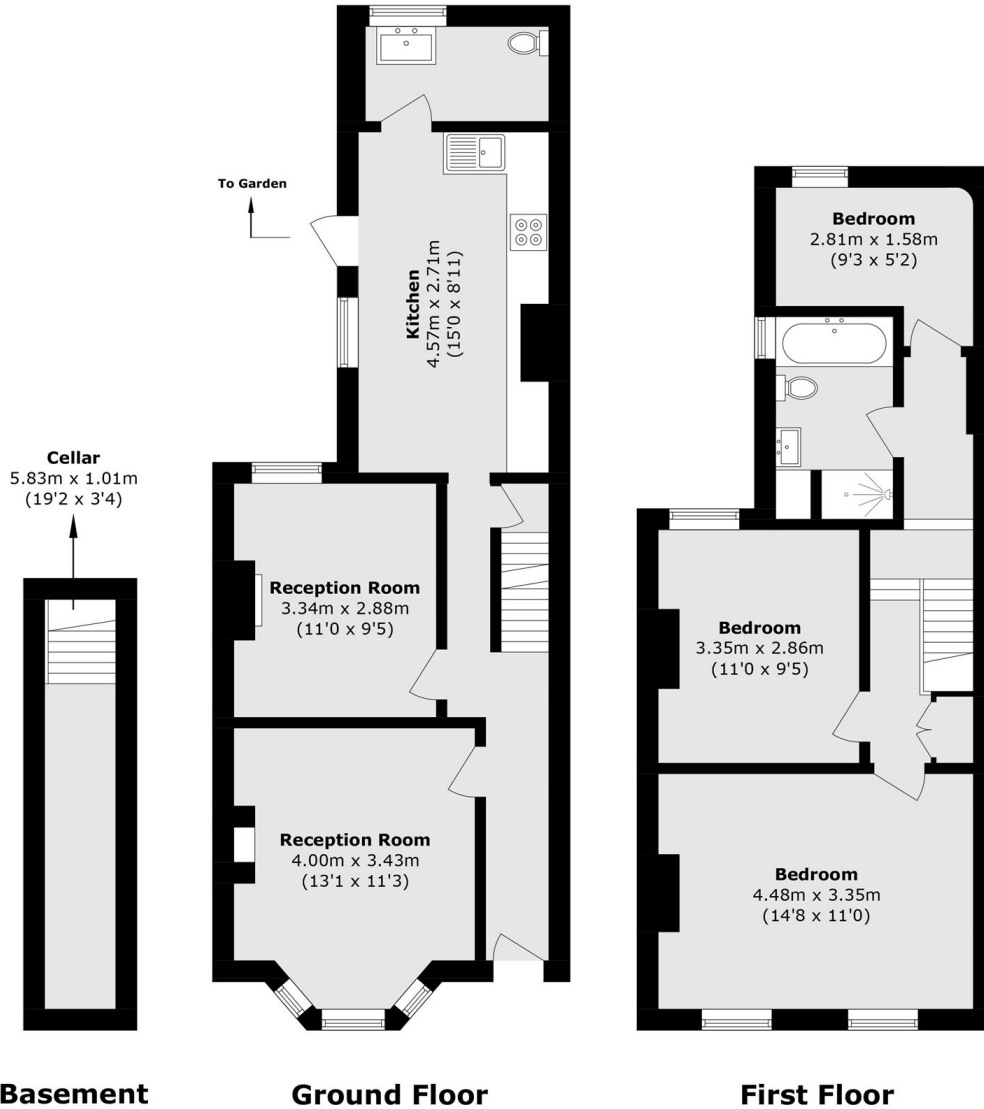
- End Of Terrace
- Separate Fitted Kitchen
- Three Double Bedrooms
- Modern Bathroom
- Utility Room
- Private Garden



Elswick Road, SE13



Elswick Road, London, SE13



Total area (approx.): 99.2 sq. m (1067.7 sq. ft)