

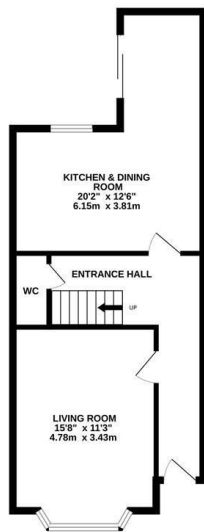
## Milward Crescent, Hastings TN34 3RU

£525,000

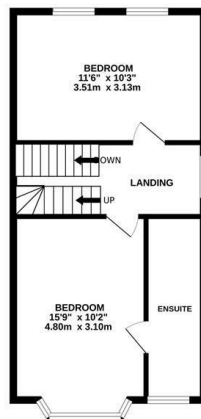


An attractive DETACHED VICTORIAN HOUSE with spacious accommodation arranged over four storeys. This fantastic property occupies an elevated position above Hastings Town centre with far reaching views across the Town and out to the English Channel. It's enviably placed a short stroll from HASTINGS TOWN CENTRE with its mainline railway station, the West Hill, Hastings Old Town and the beach. The accommodation here enjoys GRAND PROPORTIONS with a versatile layout and a WEALTH OF ORIGINAL FEATURES including a stained glass window and high ceilings, the ground floor is arranged as a BAY FRONTED LIVING SPACE which enjoys a front aspect while the MODERN KITCHEN AND DINING SPACE is positioned at the rear of the property with sliding doors leading out to the rear garden. The kitchen is fitted with contemporary units which house integrated appliances and there is a dining nook with built in banquette seating, creating a sociable space perfect for entertaining. On the first floor there are two double bedrooms, the principal bedroom benefits from a stylish en-suite shower room and there are two further large double bedrooms.

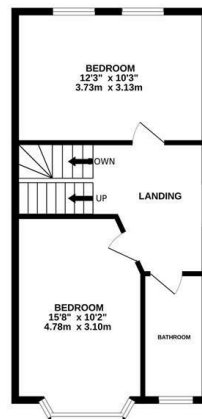
GROUND FLOOR  
507 sq.ft. (47.1 sq.m.) approx.



1ST FLOOR  
463 sq.ft. (43.0 sq.m.) approx.



2ND FLOOR  
463 sq.ft. (43.0 sq.m.) approx.



3RD FLOOR  
362 sq.ft. (33.7 sq.m.) approx.



TOTAL FLOOR AREA: 1796 sq.ft. (166.8 sq.m.) approx.

Whilst every attempt has been made to ensure the accuracy of the floorplan contained here, measurements of doors, windows, rooms and any other items are approximate and no responsibility is taken for any error, omission or mis-statement. This plan is for illustrative purposes only and should be used as such by any prospective purchaser. The services, systems and appliances shown have not been tested and no guarantee as to their operability or efficiency can be given.  
Made with Metropix ©2025

