



Flat 105

Ashley Road | | London | N17 9SU

£2,500



STRETTONS

Key features

- Two double bedrooms
- Open-plan living area
- Bosch kitchen appliances
- Two modern bathrooms
- Private balcony access
- Shared roof terrace
- 0.3 miles to station
- Wooden flooring throughout
- Security entryphone system
- Available Immeadiatly

Description

Nestled on the vibrant Ashley Road in London, this newly developed two double bedroom apartment offers a perfect blend of modern living and convenience. The flat boasts an inviting open plan living and kitchen area, designed to create a spacious and airy atmosphere. The kitchen is equipped with high-quality Bosch integrated appliances, including a fridge, freezer, oven, and microwave, ensuring that culinary enthusiasts will find everything they need at their fingertips.

Two well-proportioned bedrooms, this apartment provides ample space for comfortable living. Each bedroom is designed to be a tranquil retreat, perfect for unwinding after a busy day. The property also features two stylish bathrooms, adding to the convenience and appeal of this home.

Situated in a sought-after location, residents will enjoy easy access to local amenities, transport links, and the vibrant culture that London has to offer. This flat is an excellent opportunity for those seeking a modern lifestyle in one of the capital's most dynamic areas.

Tenancy Fees

New Assured Shorthold

Tenancies Signed on or after 1st June 2019

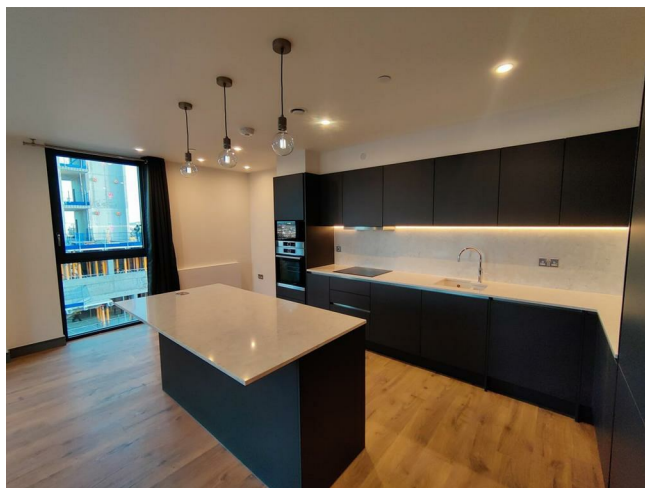
Holding deposit - 1 week's rent

Security deposit - 5 week's rent (rent of £50,000 or over per annum - 6 week's rent)

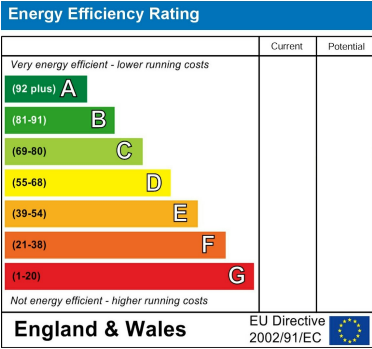
Unpaid rent - 3% above Bank of England base rate from Rent Due Date after 14 days in arrears.

Lost keys - Cost of replacement key or other security device/lock replacement/locksmith.

Directions







Council Tax Band **D** EPC Rating



69 Paul Street
London
London
EC2A 4NG
02085 094406
michael.mercer@strettons.co.uk