



Catherine Grove, SE10

£1,200,000

Dexters



Catherine Grove, SE10

A beautifully presented three double bedroom, two bathroom period family home which is situated in the Ashburnham Triangle conservation area. Further benefiting from a home office in the garden. This family home is over 1,300 sf ft. A viewing is highly recommended.

Conveniently located on the popular Ashburnham Triangle conservation area close to all transport links and amenities. The enviable location of this property makes commuting easy with Greenwich station and the DLR close by providing links to the City and Canary Wharf. Greenwich village is also within easy reach with an array of shops, restaurants and bars.

Features

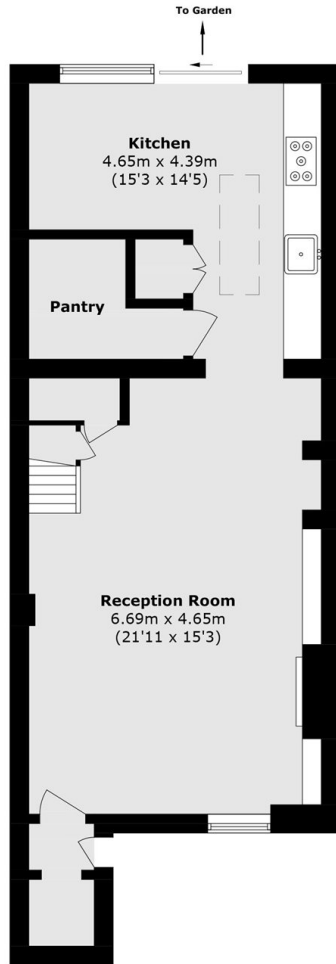
- Sought After Location
- No Work Required
- Period Family Home
- Three Double Bedrooms
- Two Bathrooms
- Home Office



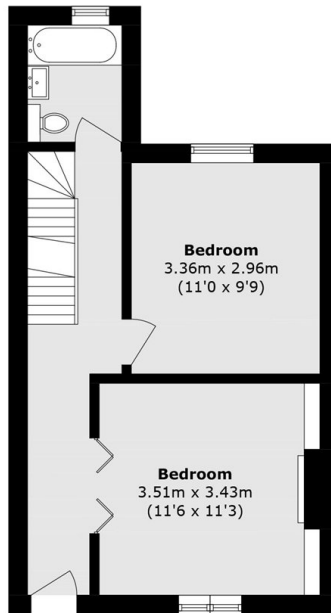




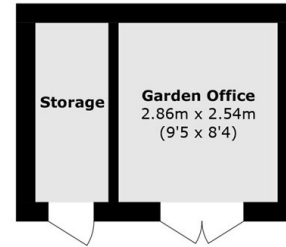
Catherine Grove, London, SE10



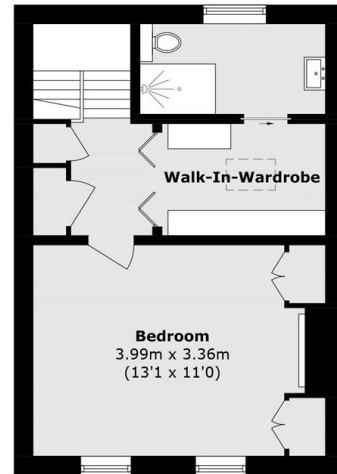
Lower Ground Floor



Ground Floor



Ground Floor



First Floor

Total area (approx.): 123.5 sq. m (1329.3 sq. ft)
Outbuilding area (approx.): 11.0 sq m (118.4 sq ft)