



ST STEPHENS GARDENS, W2

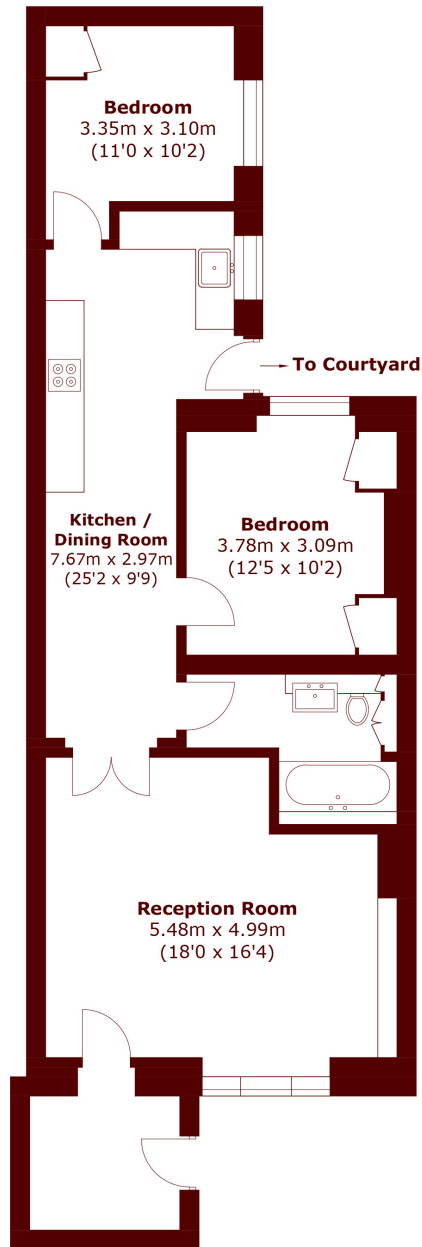
£850 per week (£3,683 per month)

A beautifully presented two-bedroom garden apartment set within an elegant stucco-fronted Victorian terrace in the heart of Notting Hill.

Two bedrooms
Patio garden
Amazing location

High ceilings
Victorian terrace
Communal gardens

STEP INSIDE ST STEPHENS GARDENS



Total area (approx.): 80.7 sq. m (868.6 sq. ft)

Notting Hill
020 7313 6910

Energy Rating: C We aim to make our particulars both accurate and reliable. However, they are not guaranteed; nor do they form part of an offer or contract. If you require clarification on any points then please contact us, especially if you're traveling some distance to view. Please note that appliances and heating systems have not been tested and therefore no warranties can be given as to their good working order

**MARSH &
PARSONS**