

Suite 2066, Fleet House, Springhead Road, Kent, DA11 8HJ.

**Sales:** 01474 330840 **Email:** info@watermanexclusive.com

www.watermanexclusive.com



**WATERMAN**  
EXCLUSIVE



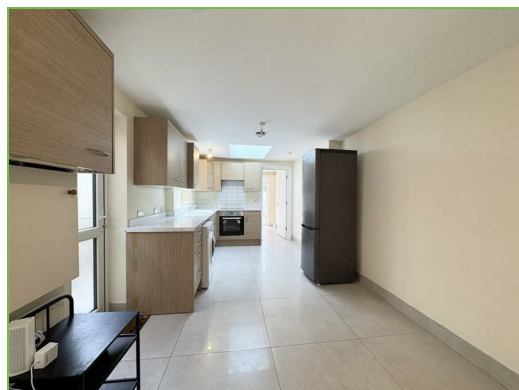
## Buckland Road, London, E10 6QS

**£1,995 Per month**

We are pleased to bring to the market this 2 BEDROOM APARTMENT. The property boasts a LARGE KITCHEN/DINER, 2 BEDROOMS, the FAMILY BATHROOM plus a separate SHOWER ROOM. Off of the kitchen is the LIVING ROOM with access to the LOW MAINTENANCE GARDEN.

Situated on Buckland Road in the heart of Leyton, this property enjoys a convenient East London location close to excellent transport links, local amenities and green spaces. Leyton Underground Station (Central Line) provides easy access to Stratford, the City and Central London, while the popular Francis Road area offers a selection of independent cafés, restaurants and shops. The area continues to be popular with professionals and families alike, thanks to its strong community feel and excellent connectivity.

Council Tax Band - B



# Ground Floor Flat, 12 Buckland Road, London, E10 6QS

## INTERNAL

Kitchen/Diner

Lounge

Bedroom 1

Bedroom 2

Bathroom

Shower Room

## EXTERNAL

