

ASKING PRICE

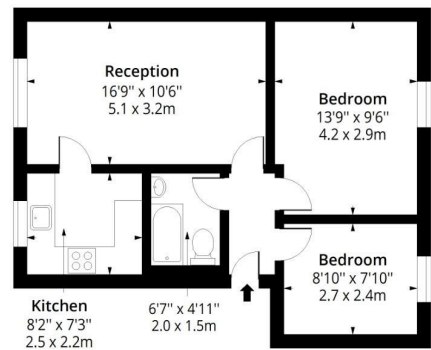
£275,000

Heybourne Road

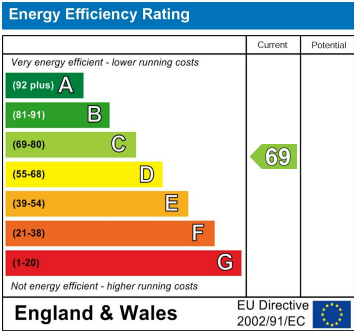
London, N17 0SX

EPC RATING: C COUNCIL TAX BAND: C

Woodrow Court, N17
Approx. Gross Internal Area 541 Sq Ft - 50.26 Sq M



Ground Floor
Floor Area 541 Sq Ft - 50.26 Sq M



Agents Note: Whilst every care has been taken to prepare these particulars, they are for guidance purposes only. All measurements are approximate and are for general guidance purposes only and whilst every care has been taken to ensure their accuracy, they should not be relied upon and potential buyers/tenants are advised to recheck the measurements.

Christopher Mark
ESTATE AGENTS

OFFICE ADDRESS

25 Heddon Court Parade
London
EN4 0DB

OFFICE DETAILS

02033 690989
Hello@christophermark.co.uk