



Reeve Street, Lowestoft NR32 1UF

welcome to

Reeve Street, Lowestoft

A three bedroom mid-terraced home offering a lounge, dining room, kitchen and ground floor bathroom, with a rear garden in a convenient Lowestoft location.

Lounge

10' 5" Max x 10' 4" (3.17m Max x 3.15m)
Double glazed front door. Double glazed window to front. Carpet flooring. Feature fireplace. Storage cupboard with electric box. Radiator. Power points.

Dining Room

10' 6" Max x 10' 6" (3.20m Max x 3.20m)
Double glazed window to rear. Sliding door to kitchen. Carpet flooring. Radiator. Power points.

Kitchen

13' 3" x 5' 3" (4.04m x 1.60m)
Double glazed window to side. Wood effect flooring. Fitted units and worktops. Sink and drainer unit. Space for electric oven.

Bathroom

Double glazed frosted window to side. Wood effect flooring. Wc and wash hand basin. Bathtub with mixer taps and overhead shower. Extractor fan.

Bedroom One

10' 6" x 10' 5" (3.20m x 3.17m)
Double glazed window to rear. Access to bedroom three. Carpet flooring. Radiator. Power points.

Bedroom Two

10' 4" Max x 10' 4" (3.15m Max x 3.15m)
Double glazed window to front. Carpet flooring. Built in storage cupboard. Radiator. Power points.

Bedroom Three

7' 10" Max x 5' 10" Max (2.39m Max x 1.78m Max)
Double glazed window to rear. Carpet flooring. Power points.

Rear Garden

Concrete path leading to rear access gate. Timber

shed to rear. Mix of brick wall and fence surround.





view this property online williamhbrown.co.uk/Property/LOW108724



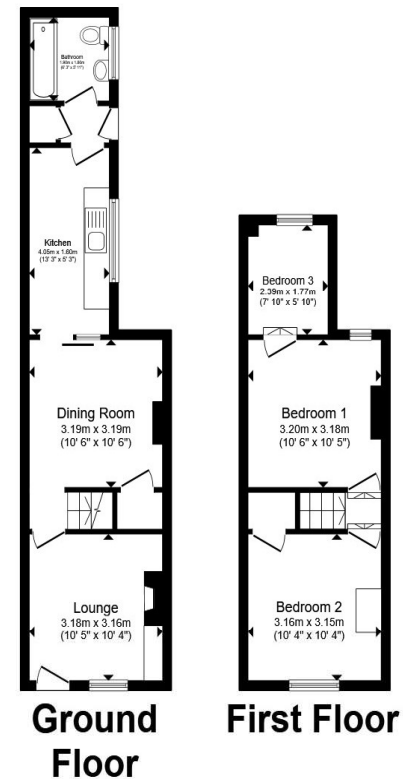
welcome to

Reeve Street, Lowestoft

- THREE BEDROOM MID-TERRACE PROPERTY
- LOUNGE AND SEPARATE DINING ROOM
- KITCHEN TO THE REAR
- GROUND FLOOR BATHROOM
- THREE FIRST-FLOOR BEDROOMS

Tenure: Freehold EPC Rating: E
Council Tax Band: A

£125,000



Total floor area 64.5 m² (694 sq.ft.) approx

This floor plan is for illustrative purposes only. It is not drawn to scale. Any measurements, floor areas (including any total floor area), openings and orientation are approximate. No details are guaranteed, they cannot be relied upon for any purpose and they do not form part of any agreement. No liability is taken for any error, omission or misstatement. A party must rely upon its own inspection(s). Powered by www.propertybox.io



view this property online williamhbrown.co.uk/Property/LOW108724



Property Ref:
LOW108724 - 0005

1. MONEY LAUNDERING REGULATIONS Intending purchasers will be asked to produce identification documentation at a later stage and we would ask for your co-operation in order that there is no delay in agreeing the sale. 2. These particulars do not constitute part or all of an offer or contract. 3. The measurements indicated are supplied for guidance only and as such must be considered incorrect. Potential buyers are advised to recheck measurements before committing to any expense. 4. We have not tested any apparatus, equipment, fixtures or services and it is in the buyers interest to check the working condition of any appliances. 5. Where an EPC, or a Home Report (Scotland only) is held for this property, it is available for inspection at the branch by appointment. If you require a printed version of a Home Report, you will need to pay a reasonable production charge reflecting printing and other costs. 6. We are not able to offer an opinion either written or verbal on the content of these reports and this must be obtained from your legal representative. 7. Whilst we take care in preparing these reports, a buyer should ensure that his/her legal representative confirms as soon as possible all matters relating to title including the extent and boundaries of the property and other important matters before exchange of contracts.

William H Brown is a trading name of Sequence (UK) Limited which is registered in England and Wales under company number 4268443. Registered Office is Cumbria House, 16-20 Hockliffe Street, Leighton Buzzard, Bedfordshire, LU7 1GN. VAT Registration Number is 500 2481 05.


william h brown



01502 585998



Lowestoft@williamhbrown.co.uk



138 London Road North, LOWESTOFT, Suffolk,
NR32 1HB



williamhbrown.co.uk