

**LONDON
VICTORIA
GROUPS** 



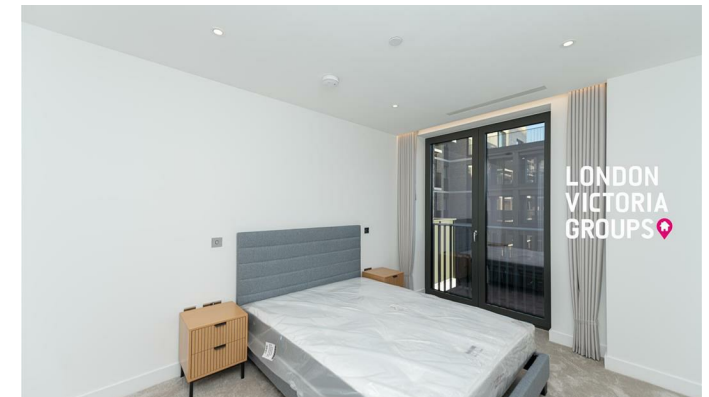
62 Calthorpe Street

, London WC1X 0FD

- 2 Bedrooms 2 Bathrooms
- Bright open-plan living and dining area
- 24-hour concierge service
- Secure entry system and lift access
- CTB-F
- Floor-to-ceiling windows
- Fully equipped residents' gym and wellness centre
- Landscaped communal gardens and courtyards
- EPC-B

£5,000 Per Month

Local Authority **Islington**
Council Tax Band **F**
EPC Rating **B**



London Office Office

Spaces Victoria, 25 Wilton Road, Pimlico,
London, SW1V 1LW

Contact

020 3084 3094
XL@londonvictoriagroups.co.uk
www.londonvictoriagroups.co.uk

Agents Note: Whilst every care has been taken to prepare these particulars, they are for guidance purposes only. All measurements are approximate and for general guidance purposes only and whilst every care has been taken to ensure accuracy, they should not be relied upon and potential buyers/tenants are advised to recheck the measurements.