

RIVERVIEW STOKE GABRIEL



MARCHANT PETIT

COASTAL, TOWN & COUNTRY



RIVERVIEW

A charming four bedroom period house sitting in an elevated position with wonderful views over the neighbouring countryside with a superb separate studio, garden and off street parking.

The house is approached via its own private driveway and is entered via a spacious square entrance hall with a separate utility room with a shower and WC. The living room with wood burner is a lovely interconnecting space with the conservatory which leads out onto a patio garden. The kitchen / dining room has ample space for a dining room table and chairs and is fully fitted with patio doors out onto the garden. Upstairs there are three double bedrooms, a smaller fourth bedroom and a family bathroom.

Outside is a private driveway up to the house with off street parking for several cars. The garden is mainly laid to lawn with fruit trees, shrub and flower borders. A studio room sits at the end of the garden which makes a great office space with power.

The picturesque village of Stoke Gabriel, within the South Devon AONB, sits on the east bank of The River Dart and offers a quay, a pontoon and a landing stage from which to enjoy the river and Mill Pool with easy access to the sea. The village offers a range of local societies to include a very active boating association, cricket club, Scouts and art society. There is a primary school, post office and general store, two public houses, cafes and a 13th century church with an ancient yew tree. The bustling medieval market town of nearby Totnes has a mainline railway station giving direct connections to London. There is also good access to the A38 Devon Expressway, linking Plymouth and Exeter where it joins the M5. Schooling in the area is excellent with well-regarded independent, comprehensive and grammar schools. Totnes also boasts a thriving market as well as a good selection of shops, supermarkets, restaurants and inns.





KEY FEATURES

- Four Bedrooms
- Off Street Parking
- Countryside Views
- Garden
- Studio room
- Easy access to the Mill Pool and within walking distance of the River Dart





PROPERTY DETAILS

Property Address

Riverview, Hillfield, Stoke Gabriel, Totnes, TQ9 6SH

Mileages

Totnes 4 miles Exeter 24 miles Plymouth 25 miles (approximately)

Services

Mains electric, water and drainage. Gas central heating.

EPC Rating

Current: C, Potential: C

Council Tax Band

E

Tenure

Freehold

Authority

South Hams District Council

Fixtures & Fittings

All items in the written text of these particulars are included in the sale. All others are expressly excluded regardless of inclusion in any photographs. Purchasers must satisfy themselves that any equipment included in the sale of the property is in satisfactory order.

Viewing

Strictly by appointment with the sole agents, Marchand Petit, Totnes. Tel: 01803 847979.



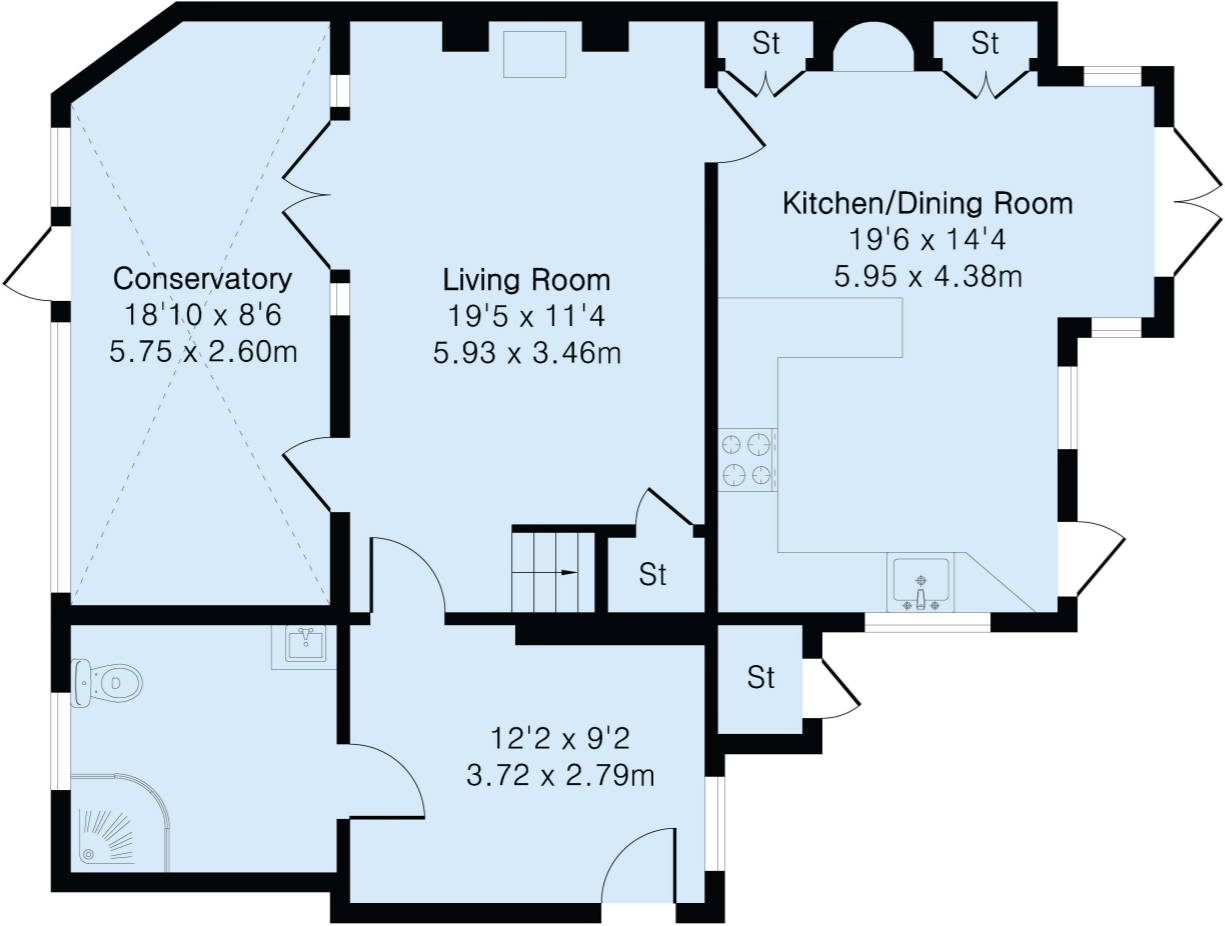
IMPORTANT NOTICE 1. These particulars are for guidance only. They are prepared and issued in good faith and are intended to give a fair description of the property, but do not constitute part of an offer or contract. 2. Any description or information given should not be relied on as a statement or representation of fact that the property or its services are in good condition. Neither Marchand Petit, nor any of its employees, has any authority to make or give any representation or warranty whatsoever in relation to the property. 3. The photographs show only certain parts and aspects of the property at the time they were taken. Any areas, measurements or distances given are approximate only. 4. Any reference to alterations to, or use of, any part of the property is not a statement that any regulations or other consent has been obtained. These matters must be verified by any intending purchaser. 5. Descriptions of a property are inevitably subjective, and the descriptions contained herein are used in good faith as an opinion and not by way of statement of fact. If any points of particular importance need clarifying before viewing, please do not hesitate to contact our office. MONEY LAUNDERING REGULATIONS - Prior to a sale being agreed, prospective purchasers will be required to produce identification documents. Your co-operation with this, in order to comply with Money Laundering regulations, will be appreciated and assist with the smooth progression of the sale.

FLOOR PLAN

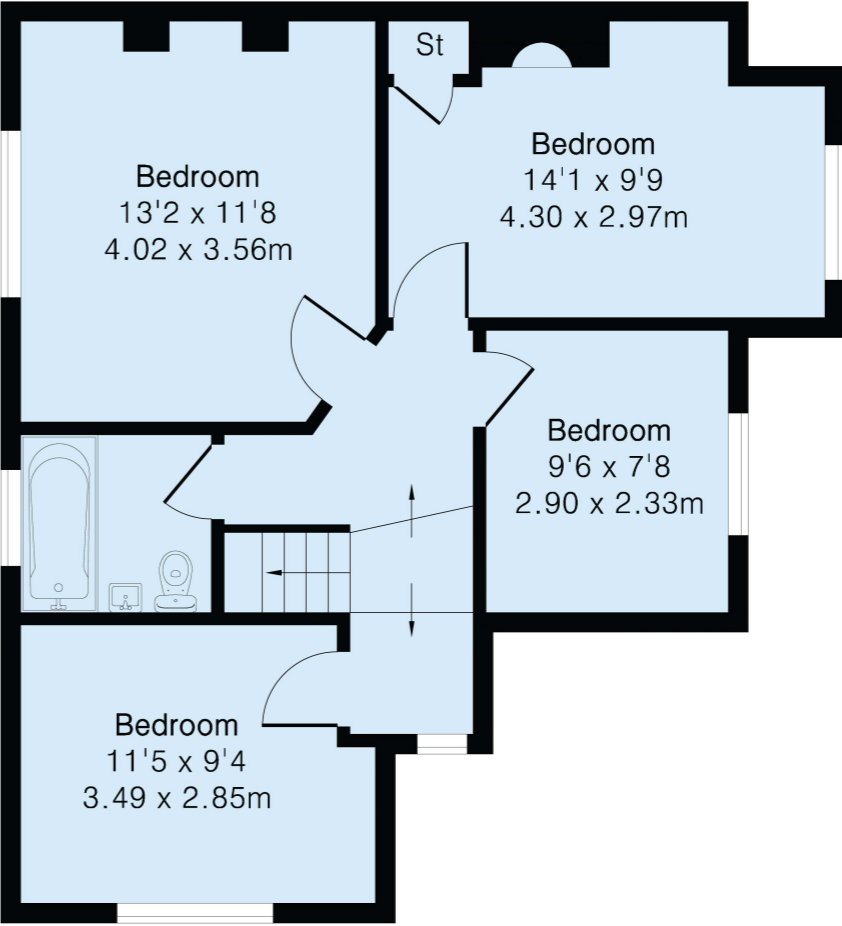
Approximate Gross Internal Area 1455 sq ft - 135 sq m

Ground Floor Area 853 sq ft – 79 sq m

First Floor Area 602 sq ft – 56 sq m



Ground Floor



First Floor



MARCHAND PETIT

COASTAL, TOWN & COUNTRY

Totnes Office

01803 847979 | totnes@marchandpetit.co.uk

Waterside House, The Plains, Totnes, Devon, TQ9 5YS

MARCHANDPETIT.CO.UK

Dartmouth
01803 839190

Kingsbridge
01548 857588

Modbury
01548 831163

Newton Ferrers
01752 873311

Salcombe
01548 844473

Totnes
01803 847979

Lettings
01548 855599

Prime Waterfront & Country House
01548 855590