

## Havelock Road, Hastings TN34 1BE

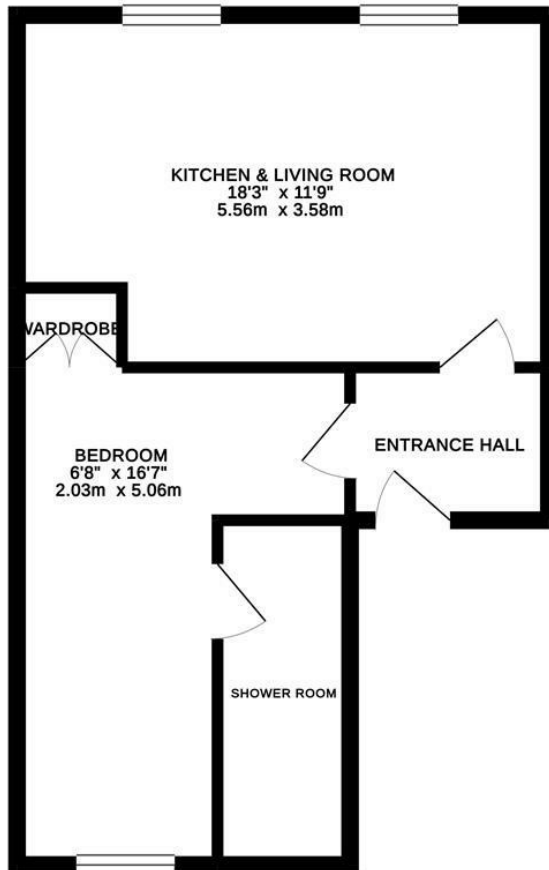
Offers in excess of £130,000



One bedroom, FIRST FLOOR apartment set within the heart of Hastings Town centre, just moments from the mainline railway station and the beach. The stylish accommodation here offers an OPEN PLAN KITCHEN AND LIVING SPACE with contemporary fitted units and plenty of room for a dining table. There is a double bedroom with bespoke built in raised bed and a STYLISH SHOWER ROOM. Being sold with a LONG LEASE it would make the PERFECT FIRST TIME HOME or investment property.

- Leasehold
- Lease length: 963 years
- Service charge: As and when

GROUND FLOOR 427 sq. ft.  
(39.7 sq. m.)



TOTAL FLOOR AREA : 427 sq. ft. ( 39.7 sq. m.) approx.

Whilst every attempt has been made to ensure the accuracy of the floorplan contained here, measurements of doors, windows, rooms and any other items are approximate and no responsibility is taken for any error, omission or mis-statement. This plan is for illustrative purposes only and should be used as such by any prospective purchaser. The services, systems and appliances shown have not been tested and no guarantee as to their operability or efficiency can be given.  
Made with Metropix ©2013

