



London Road, SW16

£1,950 Per calendar month

A modern split level two-bedroom, two-bathroom apartment located in the popular Anderson Heights development. The property has a lift and concierge services.

Anderson Heights is a modern development located near the vast array of shops, restaurants and bars in Norbury. There is a swift train service to both London Victoria and London Bridge from Norbury train station.

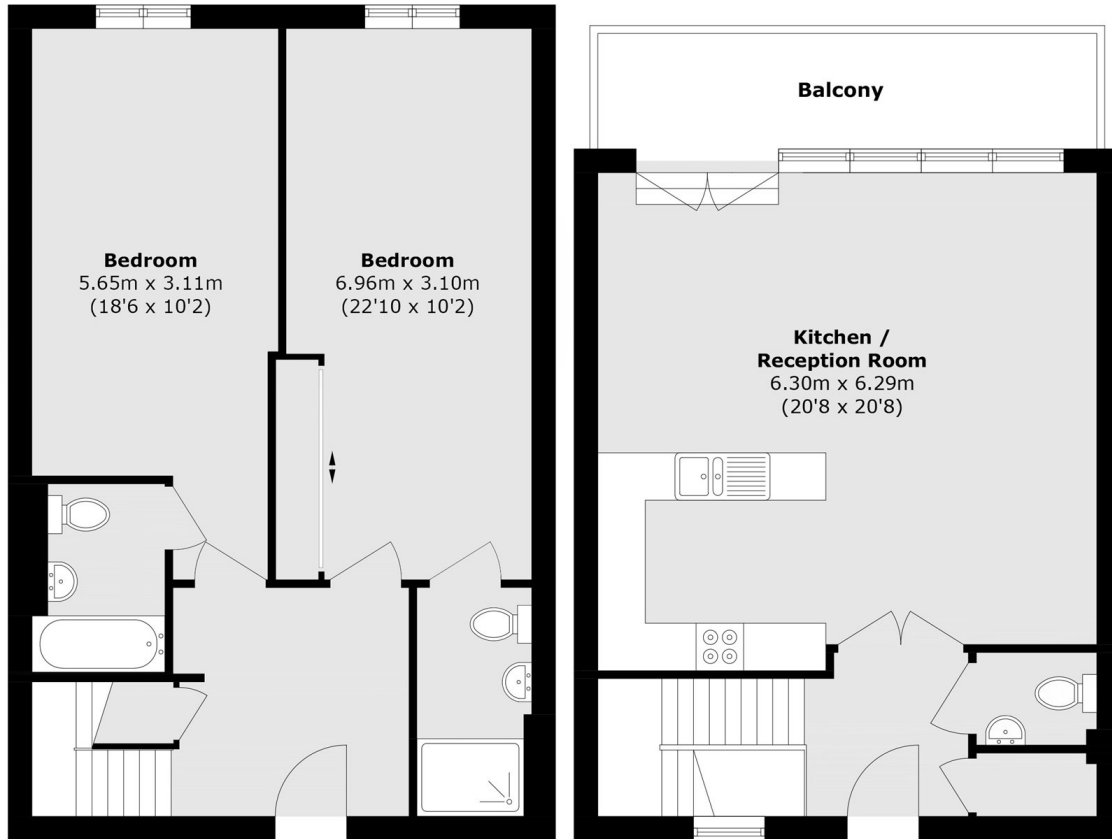
Features

Open-plan living area

Modern fitted kitchen

Two Bathrooms
One Ensuite

London Road,
London, SW16



Fourth Floor

Fifth Floor

Total area (approx.): 114.0 sq. m (1227.0 sq. ft)
Balcony area (approx.): 9.1 sq. m (97.9 sq. ft)