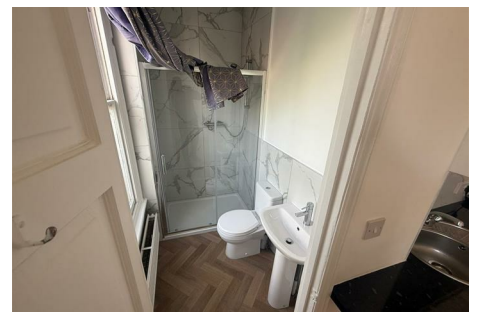
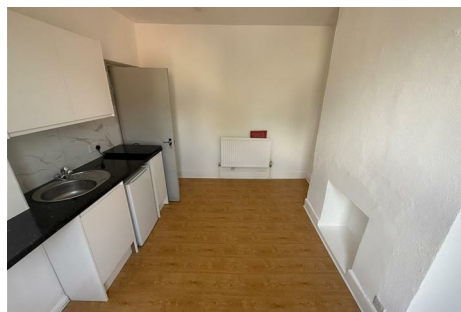


RAINBOW REID



ESTATE AGENTS || LETTING AGENTS || PROPERTY MANAGEMENT



18 Marischall Road Lewisham, London, SE13 5LG

Charming Studio Flat in a central location. This refurbished studio is perfect for a single individual or a couple looking for a cosy living space. The flat boasts a convenient location, with the train station just a short distance away, making commuting a breeze. The open-plan layout of the studio creates a light and airy feel. The kitchen is equipped with modern appliances, ideal for preparing meals at home. The shower room is sleek and contemporary, complete with a shower and stylish fittings. Residents can enjoy the convenience of local amenities, shops, and restaurants right on their doorstep. Don't miss the opportunity to make this charming studio flat your new home. Contact us today to arrange a viewing.

Council tax band A

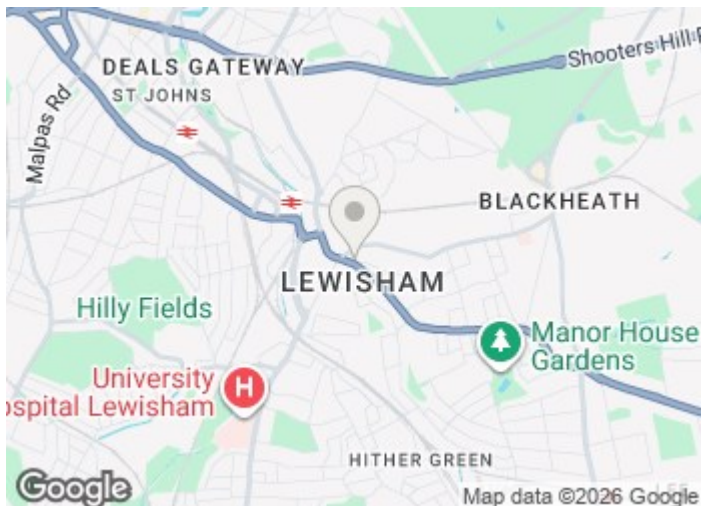
£1,050 Per Month

18 Marisshall Road

Lewisham, London, SE13 5LG



- ALL BILLS INCLUDED (EXCLUDING COUNCIL TAX)
- POPULAR LOCAL
- REFURBISHED
- EXCELLENT TRANSPORT LINKS NEARBY
- AVAILABLE IMMEDIATELY
- FANTASTIC LOCAL AMENITIES ON YOUR DOORSTEP



Directions





Floor Plan

These particulars, whilst believed to be accurate are set out as a general outline only for guidance and do not constitute any part of an offer or contract. Intending purchasers should not rely on them as statements of representation of fact, but must satisfy themselves by inspection or otherwise as to their accuracy. No person in this firm's employment has the authority to make or give any representation or warranty in respect of the property.

