



## Saffron Way, KT6

£1,195,000

An immaculately presented family home of over 1,500 sq ft. The property has been beautifully renovated throughout to create bright, stylish and versatile living. At the heart of the home is an open plan kitchen diner with a shaker style kitchen. Further accommodation includes four/five bedrooms, three bathrooms and a cosy reception room. Additional benefits include a large rear garden, driveway parking, scope to extend (STPP) and no onward chain.

Saffron Way is a quiet cul-de-sac, just over a mile away from Surbiton town centre with its variety of shops, bars, restaurants, and the mainline train station with fast and direct trains to London Waterloo in as fast as 16 minutes. Some of the areas best schools, including Hinchley Wood school are also nearby.

### Features

- Four/Five Double Bedrooms
- Three Bathrooms
- Semi Detached
- Driveway
- Scope To Extend (STPP)
- No Onward Chain



## Saffron Way, KT6

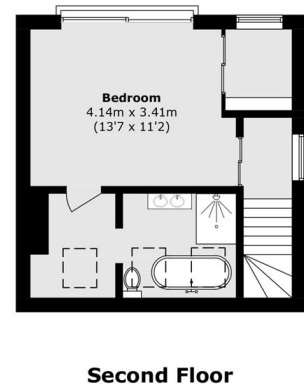
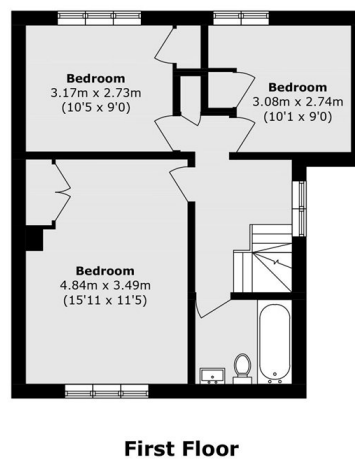
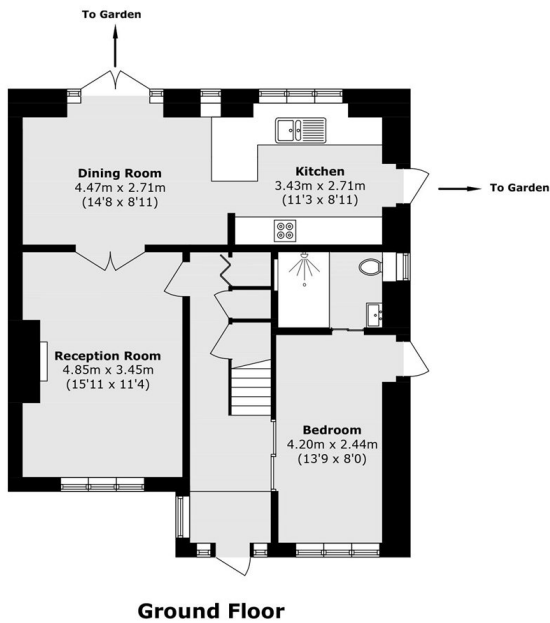
To the front of the property, a welcoming reception room with wood burning stove, leading on to the kitchen dining area with French doors to the garden. Further ground floor accommodation includes a versatile room which is currently used as a bedroom with en-suite but could be used as an office, nursery or games room.

The first floor is composed of three well appointed double bedrooms and a modern family bathroom. On the second floor, there is an impressive principle suite including an en-suite with twin sinks and copper roll top bath, a walk in wardrobe, additional study area and juliet balcony.

To the rear of the property there is a large garden with ample space for an extensive ground floor extension (STPP). To the front of the property there is a front garden and driveway parking.



# Saffron Way, Surbiton, KT6



Total Area (approx.): 148.1 sq. m (1594.1 sq. ft)