



Ffordd Taliesin, £300,000

- Council Tax Band E
- Two spacious reception rooms
- Rural views
- Bifold doors from the lounge to the garden
- Private driveway
- Large wrap-around garden with ample outdoor space
- Freehold three-bedroom home



 3
  3
  2



About the property

Welcome to the market Ffordd Taliesin. This impressive and contemporary three-bedroom freehold property on Ffordd Taliesin offers an excellent blend of style, space, and practicality. Modern throughout, the home features a spacious lounge and separate dining room, perfect for family living and entertaining. The sleek lounge opens onto the outdoor space through elegant bifold doors, creating a seamless connection between indoor and outdoor living.

The property benefits from a convenient downstairs WC, a full family bathroom upstairs, and a bright, functional layout. Outside, the generous garden wraps around the house, providing multiple seating areas, excellent privacy, and plenty of space for children, pets, or outdoor dining. A private driveway and both front and rear gardens further enhance the appeal of this superb home.

Ideal for families or buyers seeking a stylish and spacious property in a desirable residential area.



Accommodation

Lounge

15' 3" x 10' 11" (4.65m x 3.33m)

Dining Room

8' 8" x 8' 7" (2.64m x 2.62m)

Bedroom One

11' 10" x 8' 11" (3.61m x 2.72m)

Bedroom Two

11' 2" x 7' 9" (3.40m x 2.36m)

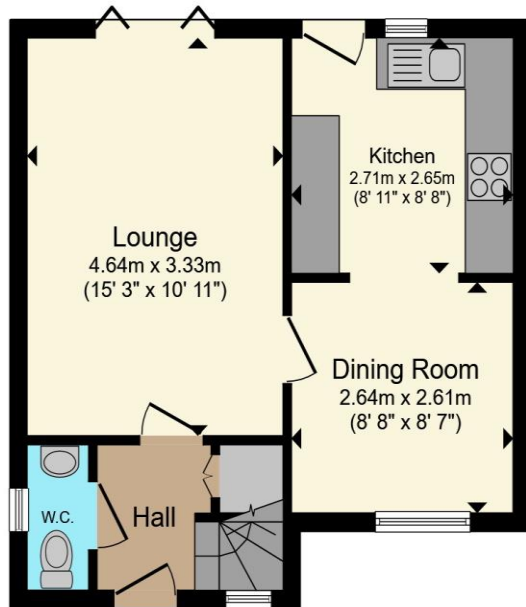
Bedroom Three

9' 7" x 7' 8" (2.92m x 2.34m)

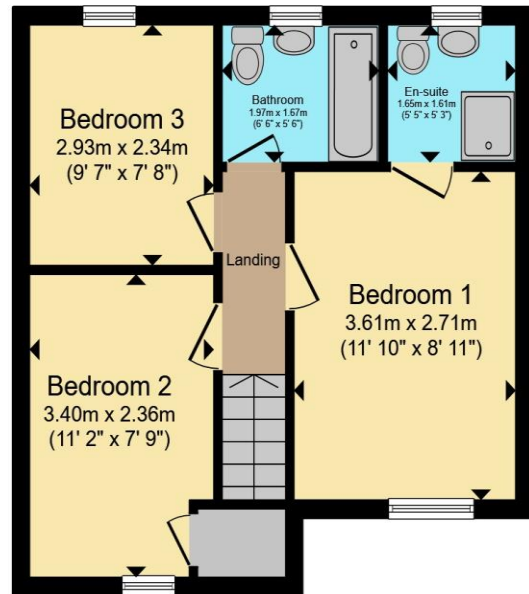
01792 641481

swansea@peteralan.co.uk

Floorplan



Ground Floor



First Floor

Total floor area 73.3 m² (789 sq.ft.) approx

This floor plan is for illustrative purposes only. It is not drawn to scale. Any measurements, floor areas (including any total floor area), openings and orientation are approximate. No details are guaranteed, they cannot be relied upon for any purpose and they do not form part of any agreement. No liability is taken for any error, omission or misstatement. A party must rely upon its own inspection(s). Powered by www.propertybox.io



Important Information

Note while we endeavour to make our sales details accurate and reliable, if there is any point which is of particular interest to you, please contact the office and we will be pleased to confirm the position for you. We have not personally tested any apparatus, equipment, fixtures, fittings or services and cannot verify they are in working order or fit for their purposes. Nothing in these particulars is intended to indicate that carpets or curtains, furnishings or fittings, electrical goods (whether wired or not). Gas fires or light fittings or any other fixtures not expressly included form part of the property offered for sale. This computer generated Floorplan, if applicable, is intended as a general guide to the layout and design of the property. It is not to scale and should not be relied upon for dimensions. Tenure: We cannot confirm the tenure of the property as we have not had access to the legal documents. The buyer is advised to obtain verification from their solicitor or surveyor.

Peter Alan Limited is registered in England and Wales under company number 2073153, Registered Office is Cumbria House, 16-20 Hockliffe Street, Leighton Buzzard, Bedfordshire, LU7 1GN. VAT Registration Number is 500 2481 05. For activities relating to regulated mortgages and non-investment insurance contracts, Peter Alan Limited is an appointed representative of Connells Limited which is authorised and regulated by the Financial Conduct Authority. Connells Limited's Financial Services Register number is 302221. Most buy-to-let

