



Connells

Clifton Close
Plymouth



Property Description

This beautifully renovated detached bungalow is situated in the sought-after Clifton Close area.

The property boasts two spacious double bedrooms, a stunning new modern kitchen, and a contemporary bathroom featuring a freestanding bath and separate shower cubicle. The light and airy open-plan lounge, dining area, and kitchen are finished with elegant white high-gloss floor tiles and benefit from two patio doors leading to the landscaped rear garden.

The garden offers a patio area, lawn, and mature fruit trees, perfect for outdoor living. The garage has been thoughtfully converted into a laundry room and gym but can easily be reverted to its original use.

Additional features include off-road parking at the front, a shared driveway, and excellent transport links with easy access to the A38 Devon Expressway, main bus routes, and local amenities.

Entrance Hall

Double glazed door to the front elevation, door access to the lounge, kitchen, bedrooms and bathroom, storage cupboard, loft access

Lounge

19' 1" max x 9' 10" max (5.82m max x 3.00m max)

Two double glazed patio doors leading to the rear garden, white high gloss tiled floor, open plan to dining room and kitchen, vertical radiator

Dining Room/Kitchen

30' 7" max x 10' 2" max (9.32m max x 3.10m max)

Open plan kitchen/diner, fitted kitchen with wall and base units, integrated electric oven and induction hob, extractor hood, integrated dishwasher and fridge freezer, sink and draining board with mixer tap, white high gloss floor tiles, two vertical radiators

Bedroom One

13' 8" max x 11' 10" max (4.17m max x 3.61m max)

Two double glazed windows to the front and side aspect, built in wardrobe, radiator

Bedroom Two

13' 2" max x 10' 2" max (4.01m max x 3.10m max)

Two double glazed windows to the front aspect, two fitted wardrobes, vertical radiator

Bathroom

9' 10" max x 5' 10" max (3.00m max x 1.78m max)

Two double glazed windows to the side aspect, freestanding oval bath, separate shower cubicle, concealed wc cistern, wash hand basin and vanity unit, fully tiled, radiator

Laundry Room

7' 6" max x 5' 3" max (2.29m max x 1.60m max)

Double glazed window to the side elevation, plumbing for washing machine

Gym

9' 7" max x 7' 5" max (2.92m max x 2.26m max)

Currently used as a gym

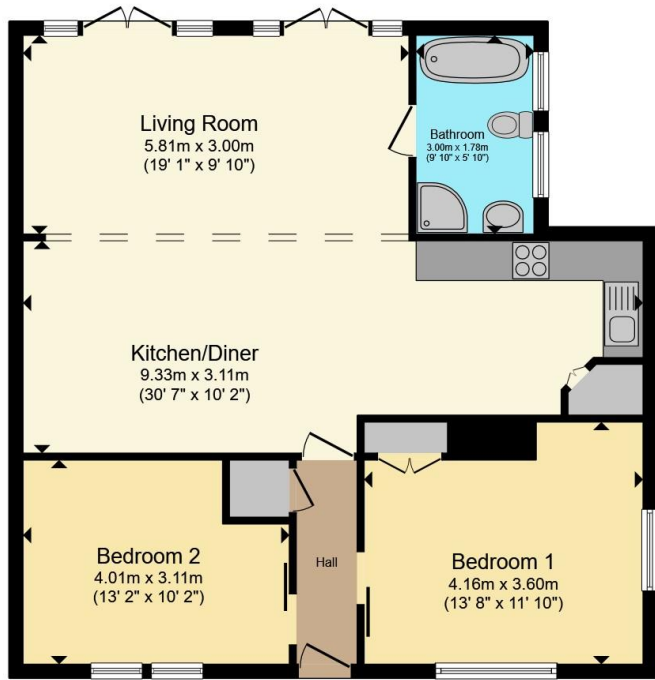
Rear Garden

Landscaped patio area and laid to lawn with fruit trees

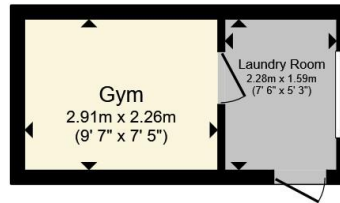
Parking

Off road parking space to the front, shared driveway





Ground Floor



Outbuilding



Total floor area 94.1 m² (1,013 sq.ft.) approx

This floor plan is for illustrative purposes only. It is not drawn to scale. Any measurements, floor areas (including any total floor area), openings and orientation are approximate. No details are guaranteed, they cannot be relied upon for any purpose and they do not form part of any agreement. No liability is taken for any error, omission or misstatement. A party must rely upon its own inspection(s). Powered by www.propertybox.io



To view this property please contact Connells on

T 01752 345 135
E plympton@connells.co.uk

110 Ridgeway Plympton
PLYMOUTH PL7 2HN

EPC Rating: D Council Tax
Band: B

view this property online connells.co.uk/Property/PLN307464

Tenure: Freehold



1. MONEY LAUNDERING REGULATIONS Intending purchasers will be asked to produce identification documentation at a later stage and we would ask for your co-operation in order that there will be no delay in agreeing the sale. 2. These particulars do not constitute part or all of an offer or contract. 3. The measurements indicated are supplied for guidance only and as such must be considered incorrect. Potential buyers are advised to recheck measurements before committing to any expense. 4. We have not tested any apparatus, equipment, fixtures, fittings or services and it is in the buyers interest to check the working condition of any appliances.

Connells Residential is registered in England and Wales under company number 1489613, Registered Office is Cumbria House, 16-20 Hockliffe Street, Leighton Buzzard, Bedfordshire, LU7 1GN. VAT Registration Number is 500 2481 05.

See all our properties at www.connells.co.uk | www.rightmove.co.uk | www.zoopla.co.uk

Property Ref: PLN307464 - 0010