



## Park View Road, W5

£1,295,000

This modern east/west facing townhouse is flooded with natural light throughout the day, giving it a bright, easy-going feel from the moment you step inside. Offering over 1,700 sq ft of flexible living space, it's currently arranged as a three-bedroom, three-bathroom home, but could easily be adapted to suit a five-bedroom layout if needed.

Park View Road sits just north of Ealing Broadway and is known for its attractive homes and convenient setting. Hanger Hill Park is only a short stroll away, while excellent transport links nearby connect you easily across London and beyond. The area is also well served by a number of well-regarded schools, making it a practical and appealing place to call home.

### Features

- Modern Town House
- Four/Five Bedrooms
- Three Bathrooms
- Contemporary Finish
- East/West Facing
- Off Street Parking

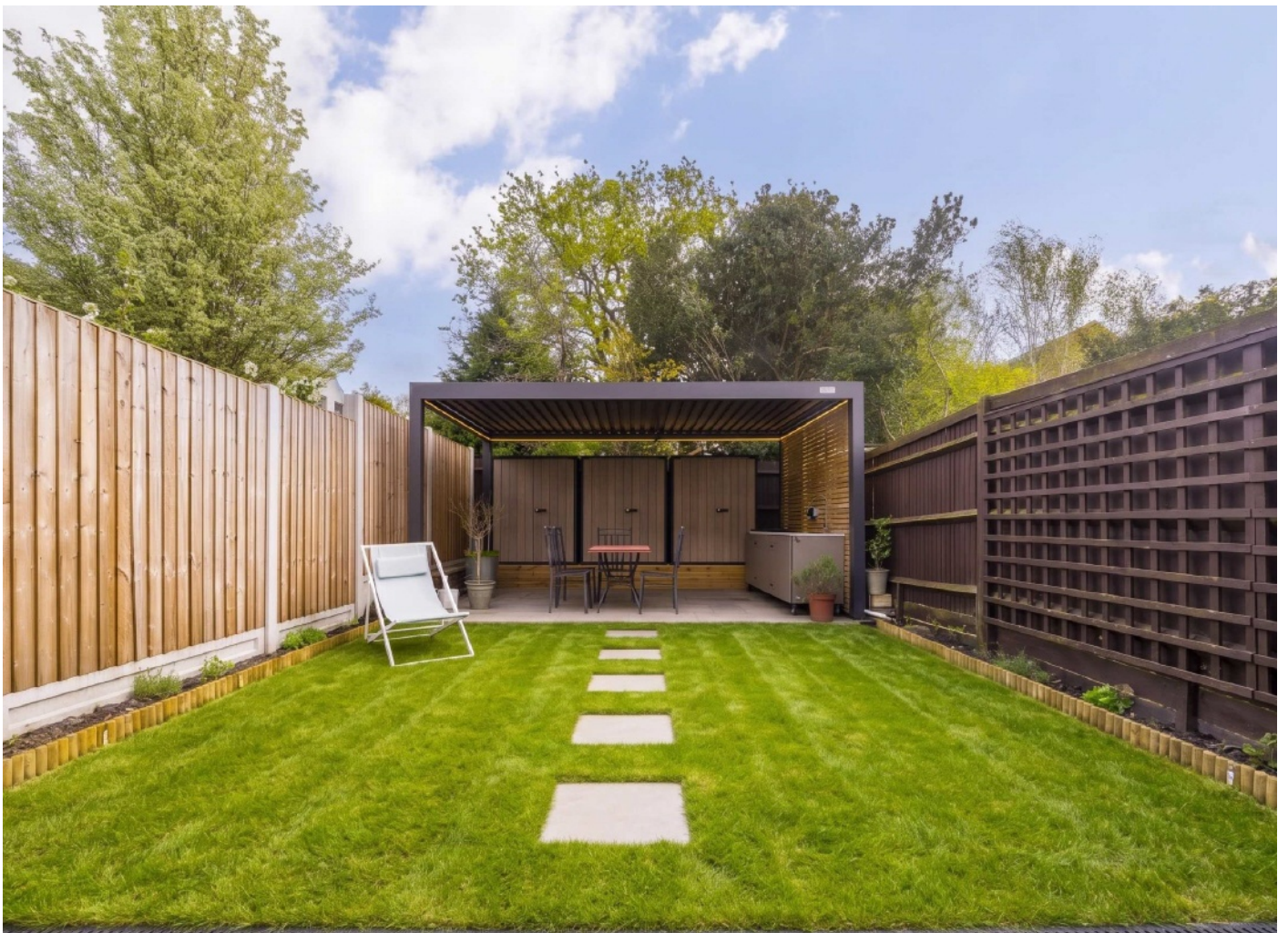


## Park View Road, W5

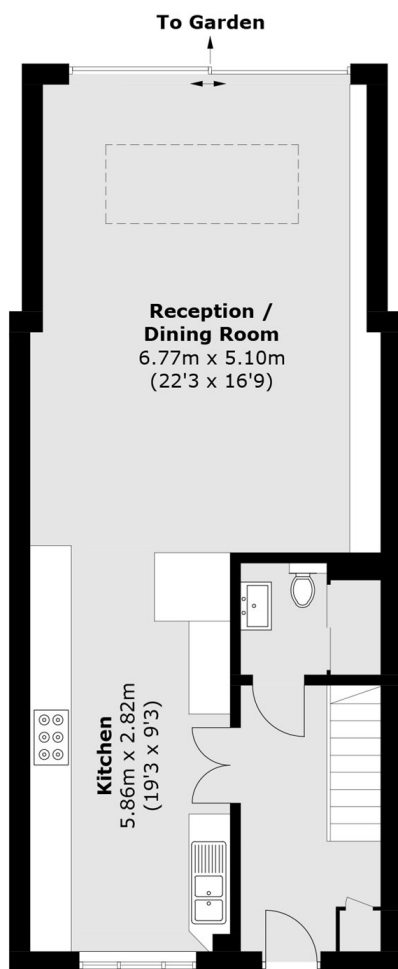
On the ground floor, everything revolves around a sleek, contemporary kitchen that opens into a generous living space perfect for day-to-day living as well as entertaining. It's a sociable setup where you can cook, relax and spend time together without feeling separated. Large doors lead straight out to the garden, bringing in even more light and creating that seamless indoor-outdoor flow. There's also a really useful utility room on this level, keeping things practical and clutter-free.

As with many townhouses, the layout across the upper floors is wonderfully flexible. The first floor is currently set up with an additional reception room, ideal as a snug, TV room or workspace alongside a bedroom with its own ensuite. Depending on your needs, this floor could easily be reconfigured to create further bedrooms, making the most of the space on offer.

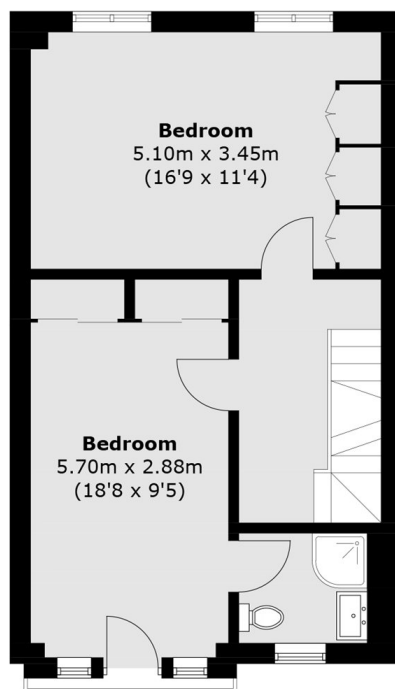
Up on the top floor, you'll find two generous double bedrooms, both bright and comfortable, along with a smaller room that works well as a study or occasional bedroom. One of the doubles benefits from its own ensuite, while a modern family bathroom serves the rest of the floor. It's a really versatile arrangement that can adapt whether you need more sleeping space, a home office or a bit of both.



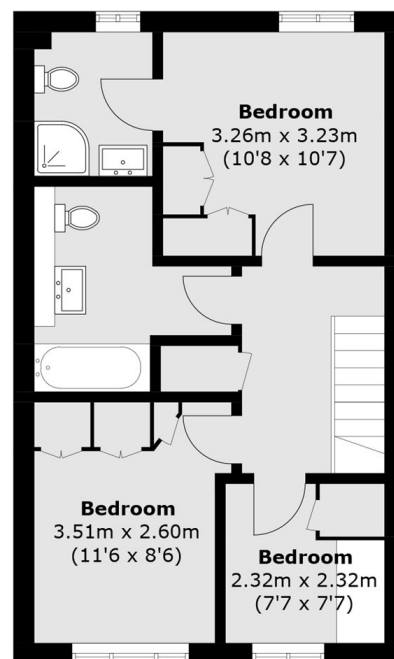
# Park View Road, London, W5



**Ground Floor**



**First Floor**



**Second Floor**

Total area (approx.): 155.2 sq. m (1,670.4 sq. ft)