

OVER 60?

Secure this property
for up to **59% less!**



Price

£650,000

Freehold

4x  2x  2x 

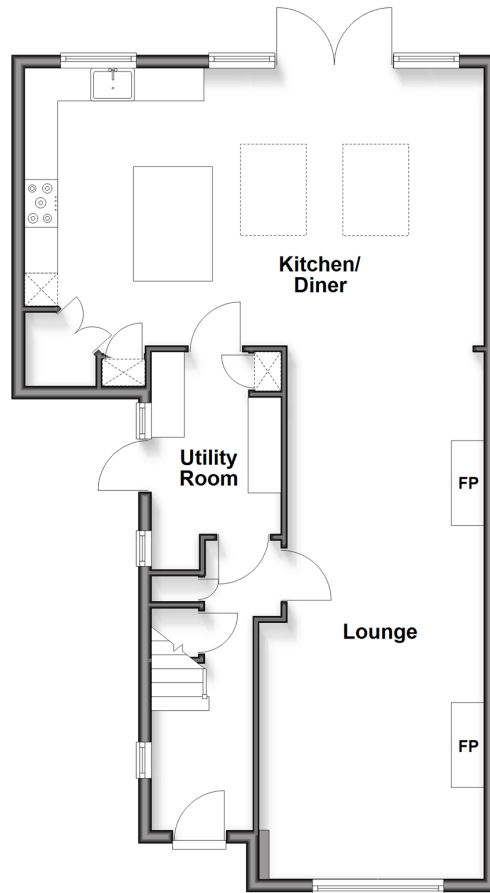
Newton Road, Whitstable, Kent, CT5

Wards

Helping you move forwards

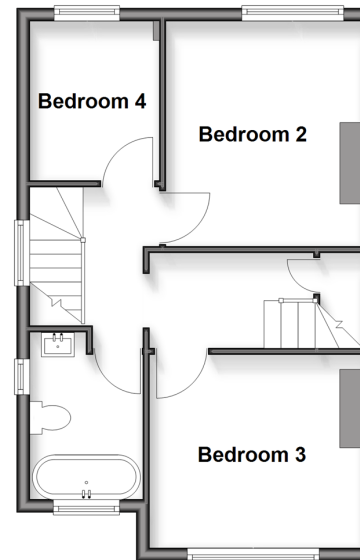
Ground Floor

Approx. 70.7 sq. metres (761.1 sq. feet)



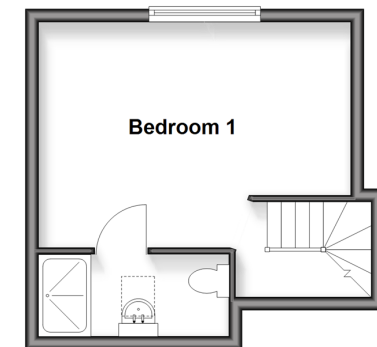
First Floor

Approx. 39.3 sq. metres (423.5 sq. feet)



Second Floor

Approx. 22.1 sq. metres (238.3 sq. feet)



Accommodation

GROUND FLOOR

Hallway

Lounge: 26'10 x 11'2 (8.18m x 3.41m)

Kitchen/Diner: 24'1 x 13'10 (7.35m x 4.22m)

Utility: 10'11 x 6'5 (3.33m x 1.96m)

FIRST FLOOR

Landing

Bedroom 2: 11'3 x 9'7 (3.43m x 2.92m)

Bathroom

Bedroom 3: 11'2 x 9'8 (3.41m x 2.95m)

Bedroom 4: 8'0 x 7'1 (2.44m x 2.16m)

SECOND FLOOR

Bedroom 1 : 15'7 x 11'5 (4.75m x 3.48m)

Ensuite Wet Room

OUTSIDE

Driveway

Rear Garden



Main features

- Beautifully extended to the rear, boasting a stunning kitchen/diner
- Ample living space in the lounge through to the kitchen
- Loft converted, creating a charming primary bedroom and en-suite on the second floor
- Large driveway, ideal for a growing family
- Highly sought-after Tankerton location



Nearest Schools

Primary Schools: Swalecliffe Community Primary 0.2 miles, St Mary's Catholic Primary 0.6 miles, Whitstable and Seasalter Endowed C of E Junior School 1.2 miles

Secondary School: The Whitstable School 0.9 miles



Transport Information

Train Stations: Chestfield & Swalecliffe 0.5 miles, Whitstable 0.8 miles, Herne Bay 2.7 miles



Address

Newton Road, Whitstable, Kent, CT5



Directions

For directions to this property please contact us.



Wards
Helping you move forwards

Call Whitstable Branch 01227 772272 ■ wardsofkennt.co.uk



- Legal advice should be taken to verify fixtures/fittings, planning, alterations and/or lease details
- Appliances & services are untested, dimensions are approximate and floor plans are not to scale
- Through a Homewise Home For Life Plan people aged 60+ can secure this property for up to 50% less, by purchasing a Lifetime Lease.



12033259/20251126/AR/NF