



Fairmont Avenue, E14 9JA  
£1,675 PCM

coopers  
OF LONDON EST. 1986

# Fairmont Avenue, E14

- Available Mid June
- Modern Studio
- Gym
- Furnished
- 4th Floor
- Short Walk to Canary Wharf

Excellent studio-suite located on the 4th floor in popular Ontario tower, walking distance to Canary Wharf.

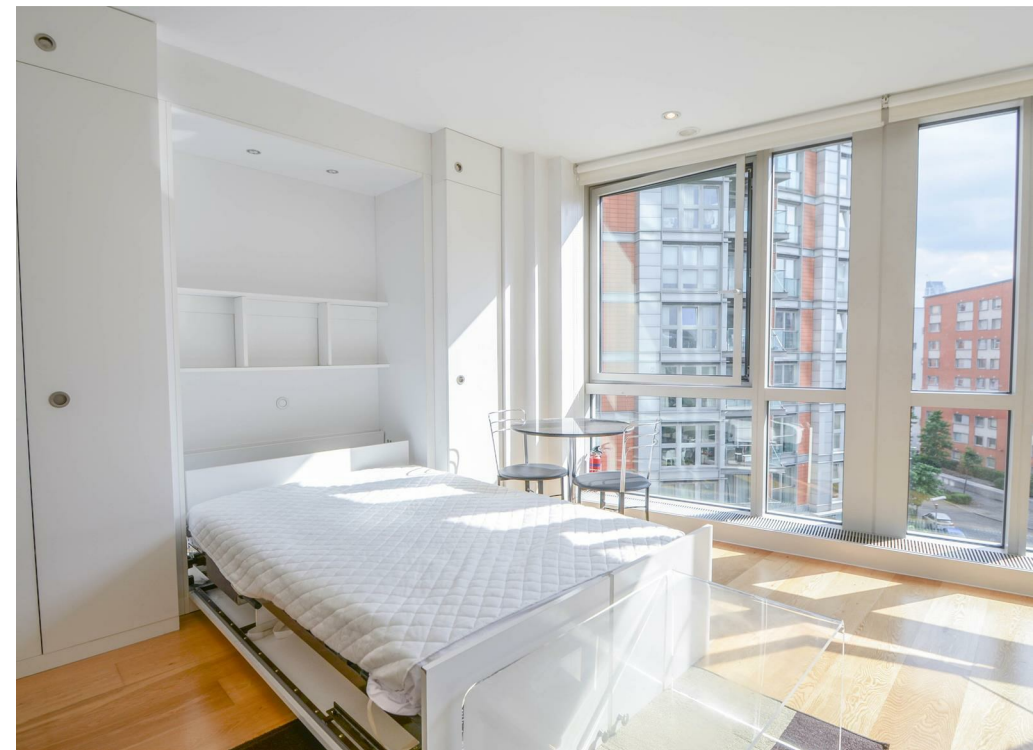
Finished to a high standard, this modern property comprises high quality fitted kitchen, luxury bathroom, separated sleeping area and reception area with floor to ceiling windows.

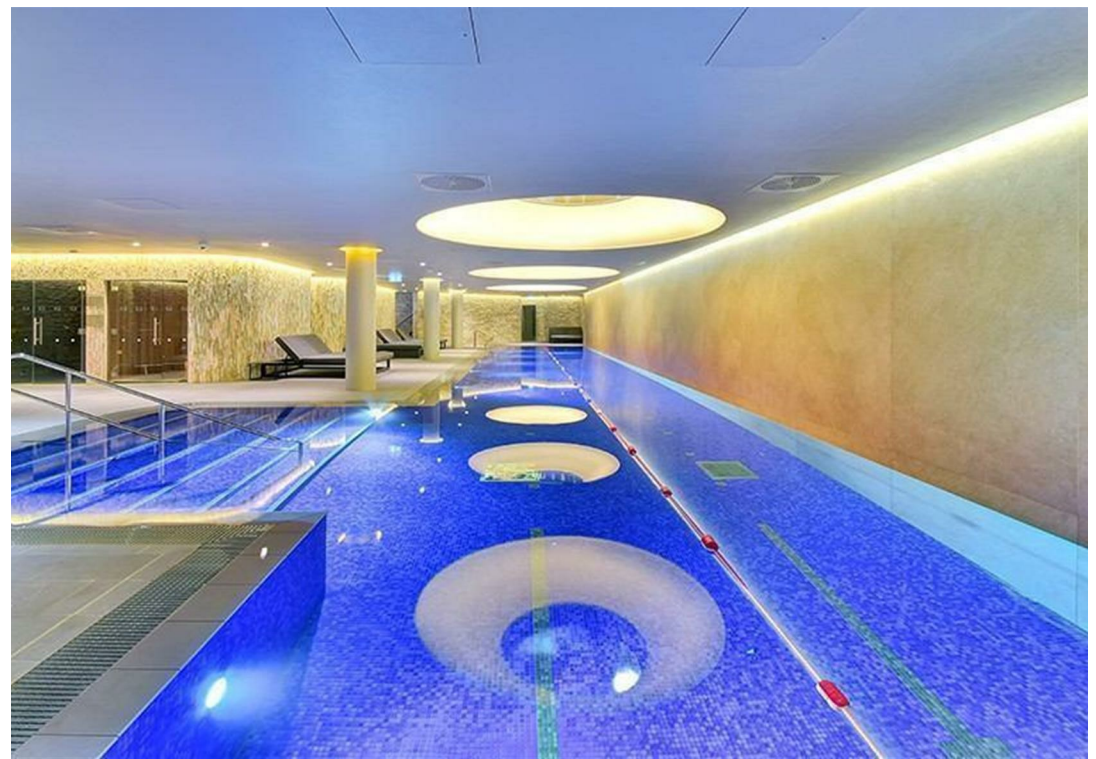
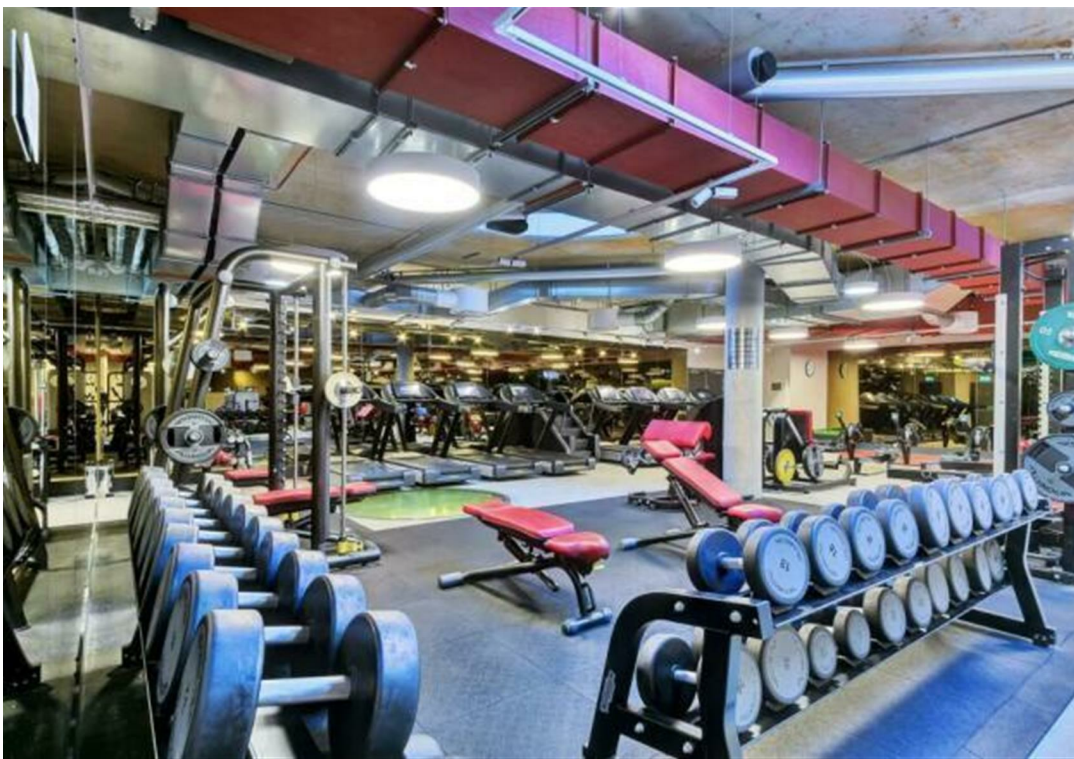
A short walk from Blackwall DLR station, Ontario Tower benefits from 24hr concierge and tenants are free to use the leisure facilities of neighbouring Radisson hotel (swimming pool, gym etc.).

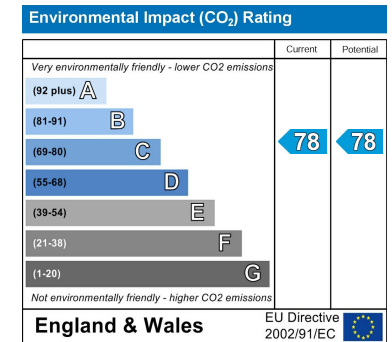
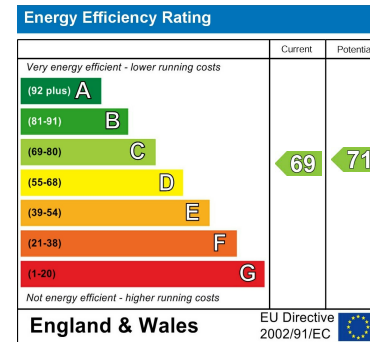
Excellent studio-suite located on the 4th floor in popular Ontario tower, walking distance to Canary Wharf.

Finished to a high standard, this modern property comprises high quality fitted kitchen, luxury bathroom, separated sleeping area and reception area with floor to ceiling windows.

A short walk from Blackwall DLR station, Ontario Tower benefits from 24hr concierge and tenants are free to use the leisure facilities of neighbouring Radisson hotel (swimming pool, gym etc.).







## Viewing

Strictly by appointment with:  
Coopers of London , 22 Cleveland Street,  
Fitzrovia, London W1T 4JB  
[info@coopersoflondon.co.uk](mailto:info@coopersoflondon.co.uk)

**0207 580 9658**

These particulars, whilst believed to be accurate are set out as a general outline only for guidance and do not constitute any part of an offer or contract. Intending purchasers should not rely on them as statements or representation of fact, but must satisfy themselves by inspection or otherwise as to their accuracy. No person in this firm's employment has the authority to make or give any representation or warranty in respect of the property.