



46 Doric Road, Liverpool  
£150,000







## 46 Doric Road

Liverpool, Liverpool

Council Tax band: A

Tenure: Freehold

- Newly renovated throughout
- 3 generously-sized bedrooms
- Extensive back garden with privacy fences
- Modern kitchen ready with all built-in appliances
- Large master bedroom with en-suite shower room
- Large front garden
- Built-in storage cupboards
- Ideally located on a quiet road off Derby Lane and Queens Drive
- Blank canvas perfect for families or young professionals
- Ideal turn-key investment property

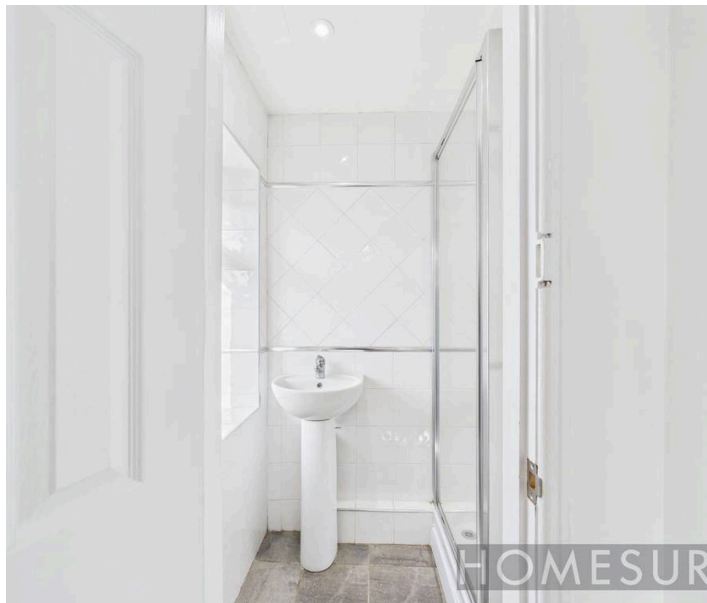




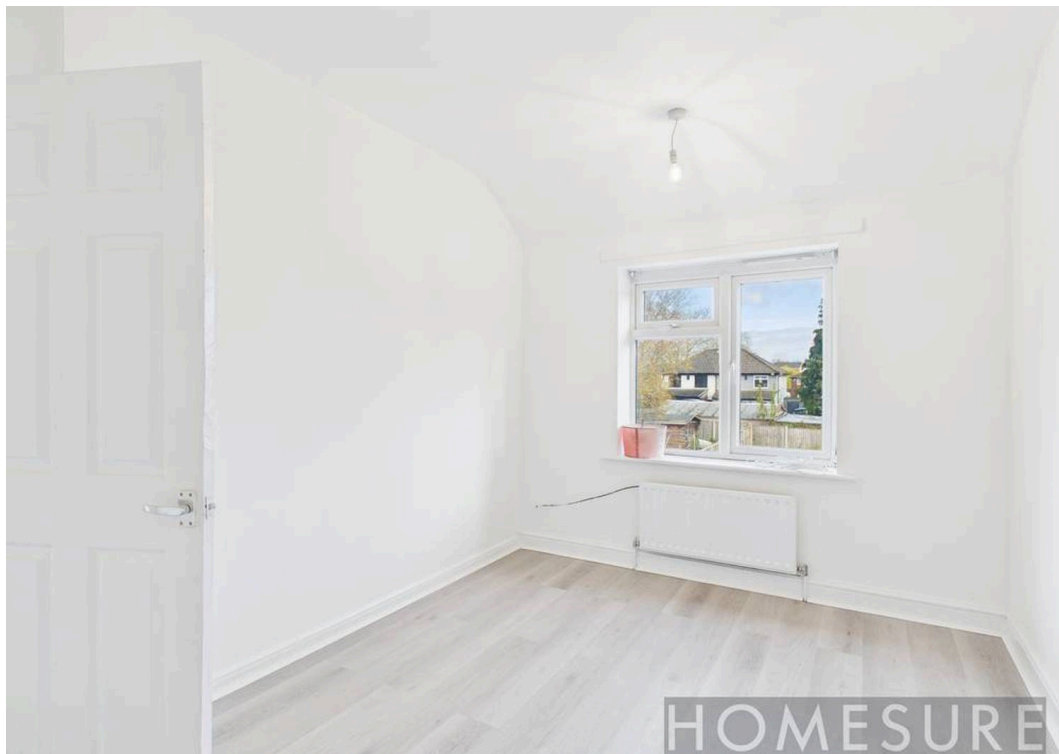
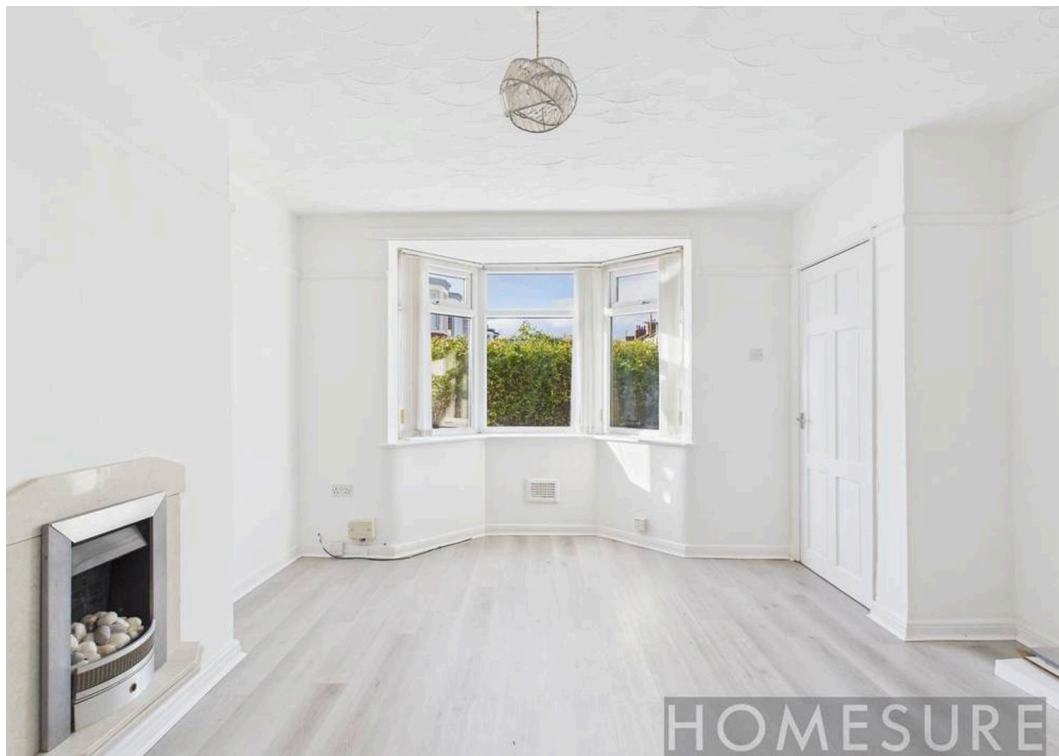


FRONT GARDEN

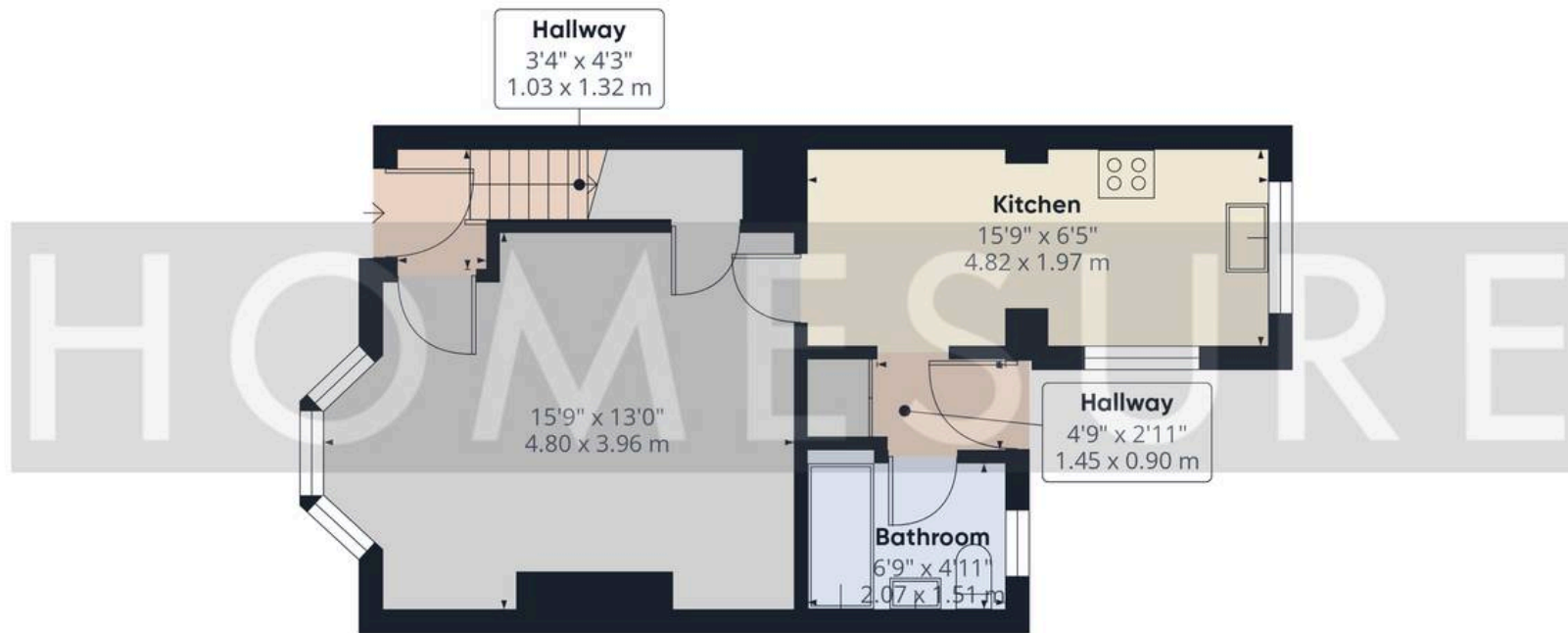
REAR GARDEN



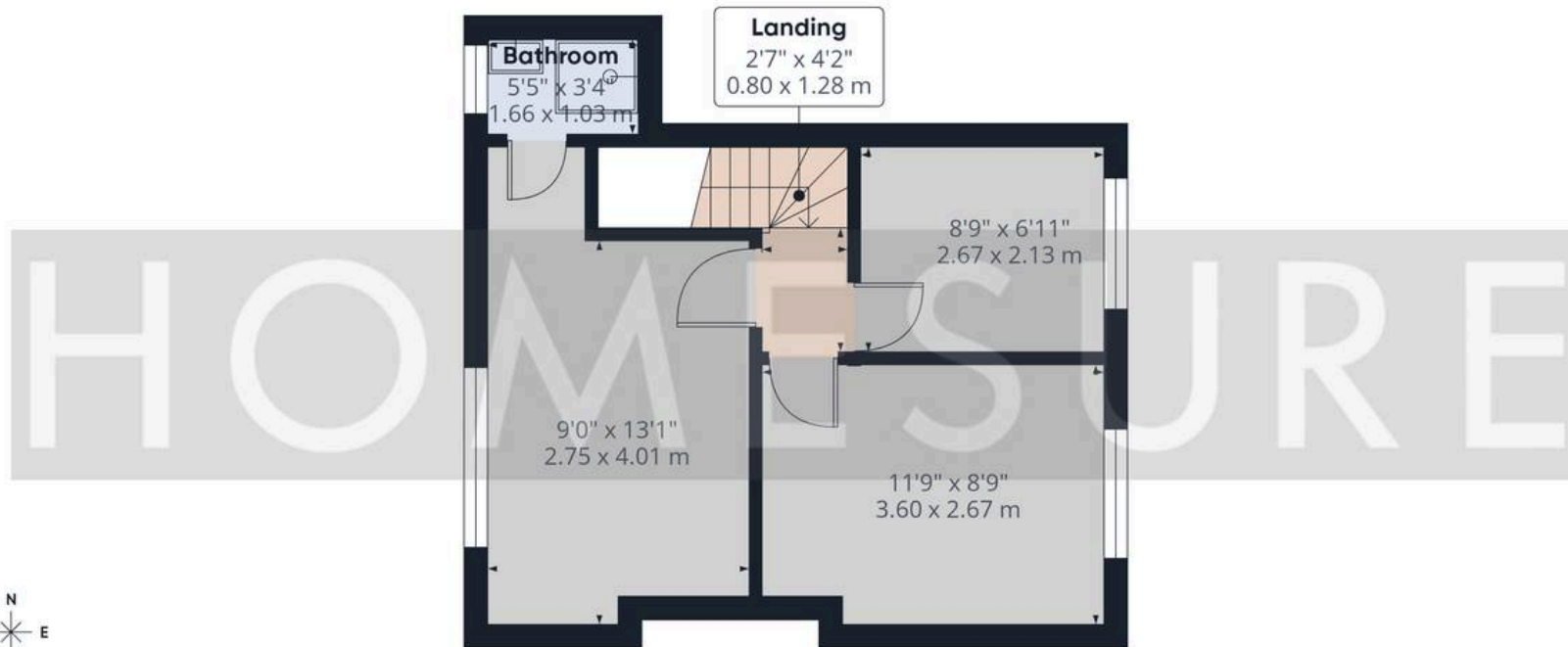








Floor 0



Floor 1

**Approximate total area<sup>(1)</sup>**  
708 ft<sup>2</sup>  
65.8 m<sup>2</sup>

(1) Excluding balconies and terraces

Calculations reference the RICS IPMS 3C standard. Measurements are approximate and not to scale. This floor plan is intended for illustration only.

GIRAFFE360







## Homesure Property

Homesure, 32 Allerton Road - L25 7RG

0151 722 22 22

[sales@homesureproperty.co.uk](mailto:sales@homesureproperty.co.uk)

[homesureproperty.co.uk/](http://homesureproperty.co.uk/)

