



Somerset Road, SW19

£2,495,000

Dexters



Somerset Road, SW19

A six bedroom, detached house. There is off street parking for multiple cars, huge further extension potential with plans, and a garden stretching in excess of 120 feet.

The ground floor begins with a large entrance hall, with a through double reception room, heading on to a conservatory extension. In addition there is a separate study, kitchen dining room, utility room and a garage. There are plans in place to drastically extend the ground floor, offering a huge amount more space.

The first floor is currently arranged with six double bedrooms and three bathrooms, however the layout lends itself perfectly to being adjusted to create a master suite and add bathrooms, combined with a loft conversion to turn the house in to a six bedroom, five bathroom luxury home.

Located between the wilds of Wimbledon Common and the famous Wimbledon Tennis Grounds. The house is a short walk from Wimbledon Village and just opposite the famous All England Wimbledon Tennis Club.

Features

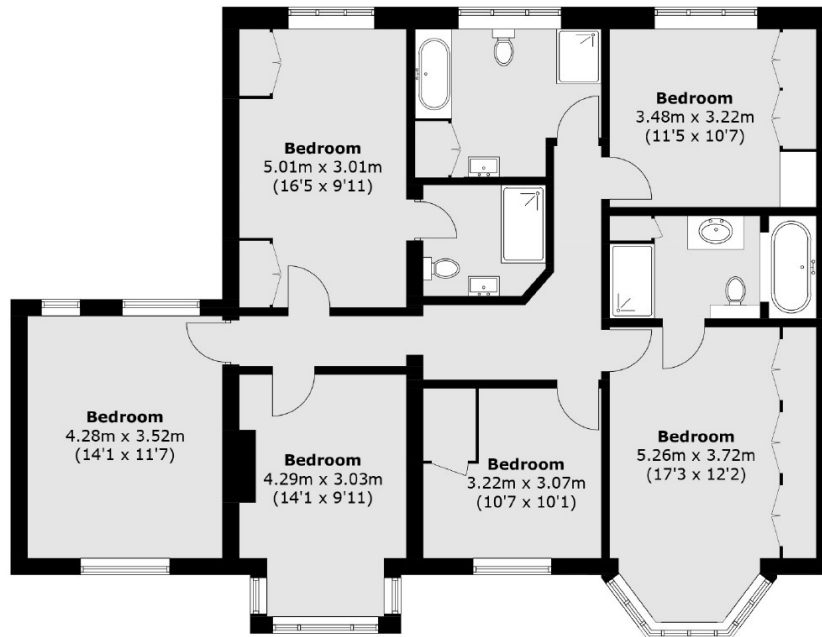
- Six Double Bedrooms
- Vast Extension Potential
- Garden Over 120 Feet
- Off Street Parking
- Detached Family Home
- Close To Wimbledon Village



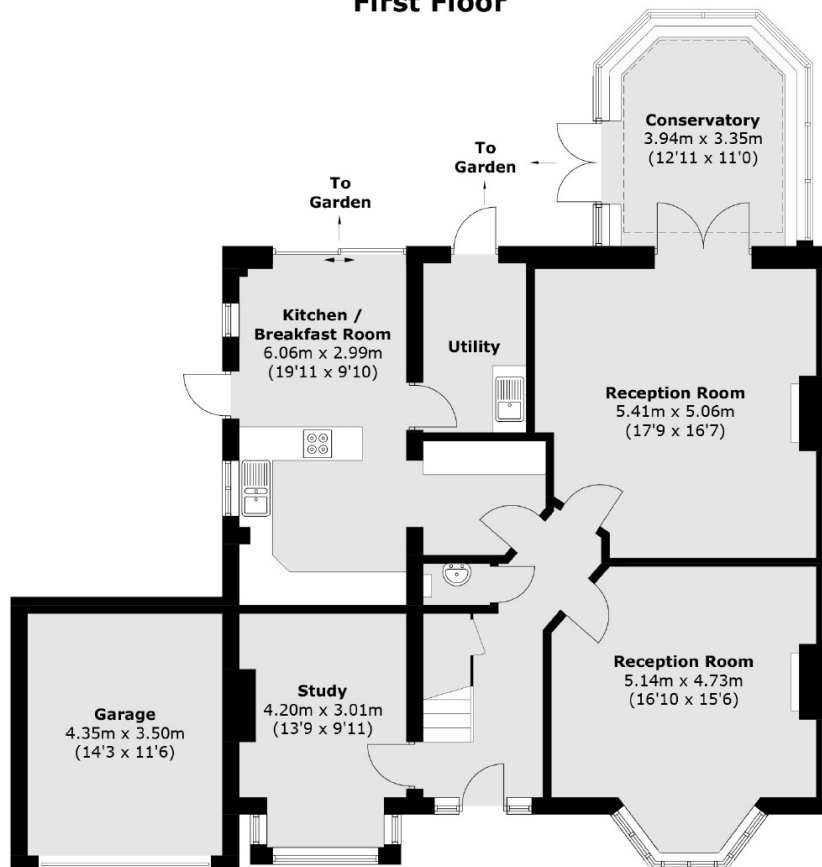




Somerset Road, London, SW19



First Floor



Ground Floor

Total area (approx.): 236.8 sq. m (2,548.9 sq. ft)
Garage (approx.): 15.2 sq. m (163.6 sq. ft)