



2 Coombe Cottages

Deancombe, Buckfastleigh, Devon, TQ11 0LZ

RENDELLS

2 Coombe Cottages

Deancombe, Buckfastleigh, TQ11 0LZ

Guide Price of £325,000

A semi-detached characterful grade II listed cottage, two double bedrooms, characterful sitting room and kitchen/breakfast room. Ground floor shower room. Delightful valley setting. Parking for one and on road parking. Front gardens and terraced rear gardens.

- Two double bedrooms
- Characterful sitting room
- Delightful valley setting
- Parking for one and on road parking
- Terraced Garden
- Easy access to A38

Situation

2 Coombe Cottages is situated on the southern edge of the Dartmoor National Park and lies approximately 2 miles south-west of the small market town of Buckfastleigh but conveniently within a mile of the A38 Devon expressway bringing Plymouth and Exeter within easy reach.

The Dartmoor National Park provides a wide array of recreational opportunities including walking, riding and cycling on the open moor with various bridle paths nearby offering easy access to the high moor.

Buckfastleigh has various amenities, services and a selection of shops, the popular moorland towns of South Brent and Ashburton are also within convenient reach. Many of the regions finest beaches are within easy driving distance with the property being potentially a convenient base location for family recreation.

Description

2 Coombe Cottage is set in a delightful, tranquil wooden valley on the edge of Dartmoor with easy access to communication links and Buckfastleigh. Front and rear gardens. A delightful sitting room with dual aspect, exposed white washed beams, stone chimney breast and inset woodburner. Two bedrooms on the first floor making this a delightful rural hideaway. 1 Coombe Cottages is also available with 3 bedrooms, 2 Bed annexe and 1.17 acres (Guide Price £650,000).

Accommodation

Wooden stable door opens into the kitchen/breakfast room with exposed stone work, painted beams and Dimplex Quantum electric heater. Sink and a half drainer with views over the front gardens. Space for an electric cooker and fridge. Ground floor bathroom with shower enclosure and Monsoon shower head and hand attachment. Hand wash basin, Belfast sink and space for a washing machine. Additional storage cupboards with rear aspect. Electric towel rail. Sitting Room with dual aspect with views over the front gardens. Good ceiling heights. White washed exposed beams. Stone chimney breast with inset woodburner. Glazed door giving access to the rear patio and terraced garden beyond. Stairs rise to the first floor.

First Floor

Half way landing window with views over the rear garden. Bedroom One with partially vaulted ceiling with front aspect taking in views over the delightful valley. Dimplex Quantum electric heater. Plenty of space for additional storage. Bedroom Two with vaulted ceiling and gable end window. Dimplex electric heater. Views over the garden and valley beyond.



Gardens and Grounds

Accessed via a pedestrian gate leading up the pathway to the front door with lawned front gardens with mature hedging giving privacy. Useful wooden storage shed. Parking for one and on road parking. Side access gate leading to the rear patio with terraced garden. Beyond part rewilding has been carried out.

| | | |
|-----------|-------------|--------------------------------|
| Tenure | Council Tax | Energy Performance Certificate |
| Freehold. | Band A. | Energy rating E. |

Services

Mains electricity. Private drainage. Private water supply.

Viewing arrangements

By telephone appointment through Rendells Estate Agents Tel: 01803 863888.

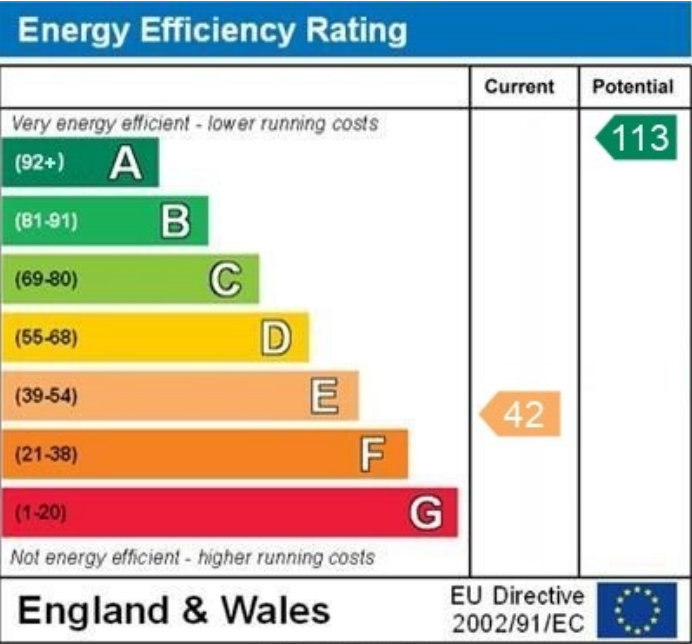
Local Authority

South Hams District Council, Follaton House, Plymouth Road, Totnes TQ9 5NE. Property is situated in the Dartmoor National Park.

Directions

From Totnes take the A384 towards Buckfastleigh and cross over the A38 dual carriageway. Follow the road around to the left into Dart Bridge Road and this in turn leads into Plymouth Road. Continue for several miles passing the village sign of Dean Prior, the continue past Dean Forge taking the second right signed Deancoombe. Continue around to the right past the village hall, continue out into the country over a bridge and next left. After about ½ a mile Coombe cottage can be found on your right.

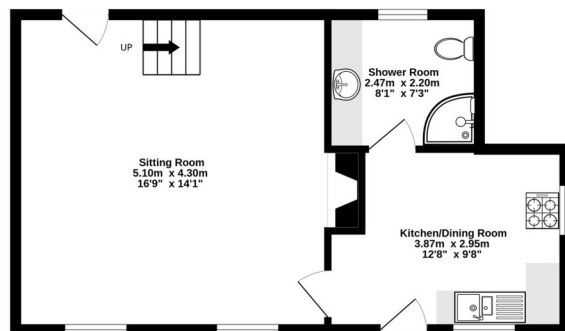
What3Words: century.toolkit.bloom



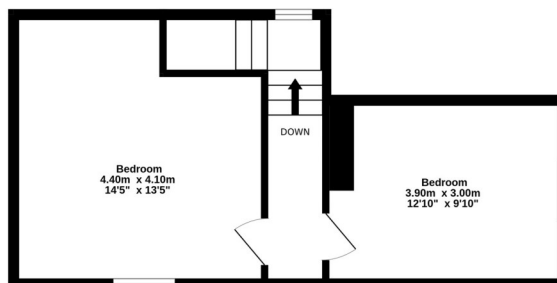
WWW.EPC4U.COM



Ground Floor
42.5 sq.m. (457 sq.ft.) approx.



1st Floor
33.5 sq.m. (360 sq.ft.) approx.



TOTAL FLOOR AREA : 75.9 sq.m. (817 sq.ft.) approx.

Whilst every attempt has been made to ensure the accuracy of the floorplan contained here, measurements of doors, windows, rooms and any other items are approximate and no responsibility is taken for any error, omission or mis-statement. This plan is for illustrative purposes only and should be used as such by any prospective purchaser. The services, systems and appliances shown have not been tested and no guarantee as to their operability or efficiency can be given.
Made with Metropix ©2026



Consumer Protection from Unfair Trading Regulations 2008

- 1) These particulars are set out for the interested parties and purchasers as a guideline only. They are intended to give a fair description but not to constitute an offer or contract.
- 2) All descriptions, dimensions, distances, orientations and other statements/facts are given in good faith but should not be relied upon as being a statement or representation of facts.
- 3) Nothing in these particulars shall be deemed to be a statement that the property is in good condition or otherwise nor that any services are in good working order. The agent has not tested any apparatus, equipment, fixtures and fittings or services and so cannot verify that they are in working order or fit for their purpose. Interested applicants are advised to make their own enquiries and investigations before finalizing their offer to purchase.
- 4) The photographs appearing in these sales brochures show only certain parts and aspects of the property at the time the photographs were taken. Aspects may have been changed since the photographs were taken and it should not be assumed that the property remains precisely as displayed in the photographs. Items shown in photographs are not included unless specifically mentioned within the sales particulars. They may however be available by separate negotiation.
- 5) Any area measurements or distances referred to herein are approximate only.
- 6) Where there is reference in these particulars to the fact that alterations have been carried out, or that a particular use is made of any part of the property, this is not intended to be a statement that any necessary planning, building regulations or other consents have been obtained and these matters must be verified by any intending purchaser.
- 7) Descriptions of a property are inevitably subjective and the descriptions contained herein are used in good faith as an opinion and not by way of statement of fact. If there are any points of particular importance that need clarifying before viewing please do not hesitate to contact this office.
- 8) References to the tenure of a property are based on information supplied by the seller. The agent has not had sight of the title documents. A buyer is advised to obtain verification from a solicitor and before finalizing their offer should make their own enquiries and investigations. Buyers should check the availability of any property and make an appointment to view before embarking on any journey.

57 Fore Street, Totnes, Devon, TQ9 5NL Tel: 01803 863888
Email: totnes@rendells.co.uk www.rendells.co.uk

RENDELLS

