



Green Lane | Rugeley | WS15 2AP

Offers Over £190,000

 **Webbs**  
estate agents

## Summary

\*\* MOTIVATED SELLER \*\* WELL PRESENTED THROUGHOUT \*\* TRADITIONAL MID TERRACE FAMILY HOME \*\* LOUNGE DINING ROOM \*\* KITCHEN \*\* DOWNSTAIRS BATHROOM \*\* THREE BEDROOMS \*\* CLOSE TO AMENITIES \*\* IDEAL FOR FIRST TIME BUYERS \*\* OFF ROAD PARKING \*\* VIEWING ADVISED \*\*

WEBBS ESTATE AGENTS are pleased to market this well presented three bedroom traditional mid terrace family home, located in a popular area of Rugeley on Green Lane. The property would be ideally suited to a first time buyer looking to get their foot on the property ladder. The property is located close to amenities, schools, useful transport links and a short walk to Rugeley Town Centre. The internal accommodation briefly comprises; entrance hallway, lounge dining room, kitchen, downstairs bathroom, three bedrooms, rear garden and the added benefit of a driveway for two vehicles. Viewing of the property is essential to fully appreciate the deceptive accommodation on offer.

## Key Features

- WELL PRESENTED MID TERRACE HOME
- TWO RECEPTION ROOMS
- DOWNSTAIRS BATHROOM
- REAR GARDEN
- IDEAL FOR FIRST TIME BUYERS
- THREE BEDROOMS
- KITCHEN
- CLOSE TO AMENITIES
- OFF ROAD PARKING
- VIEWING ADVISED

## Rooms and Dimensions

### Hallway

### Living/ Dining Room

12'2 x 22'10 (3.71m x 6.96m)

### Kitchen

8'2 x 11'2 (2.49m x 3.40m)

### Bathroom

8'3 x 7'2 (2.51m x 2.18m)

### Landing

### Bedroom 1

15'5 x 10'3 (4.70m x 3.12m)

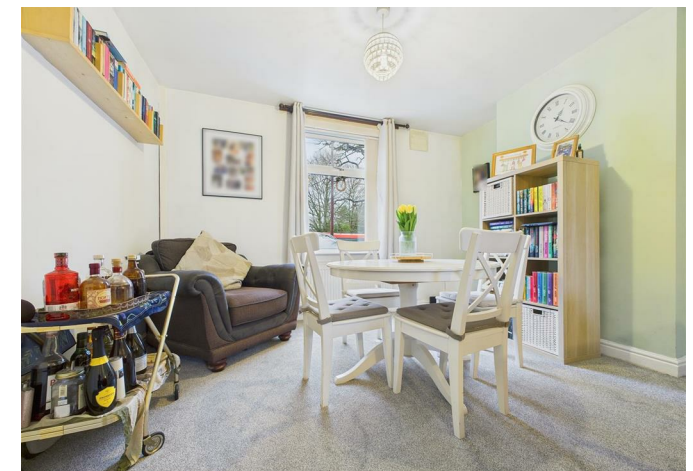
### Bedroom 2

9'6 x 12'1 (2.90m x 3.68m)

### Bedroom 3

8'3 x 11' (2.51m x 3.35m)

### Identification Checks (R)







Webbs Estate Agents - endeavour to maintain accurate depictions of properties in Virtual Tours, Floor Plans and descriptions, however, these are intended only as a guide and purchasers must satisfy themselves by personal inspection.

