



## Atkins Square, E8

£2,050 Per calendar month

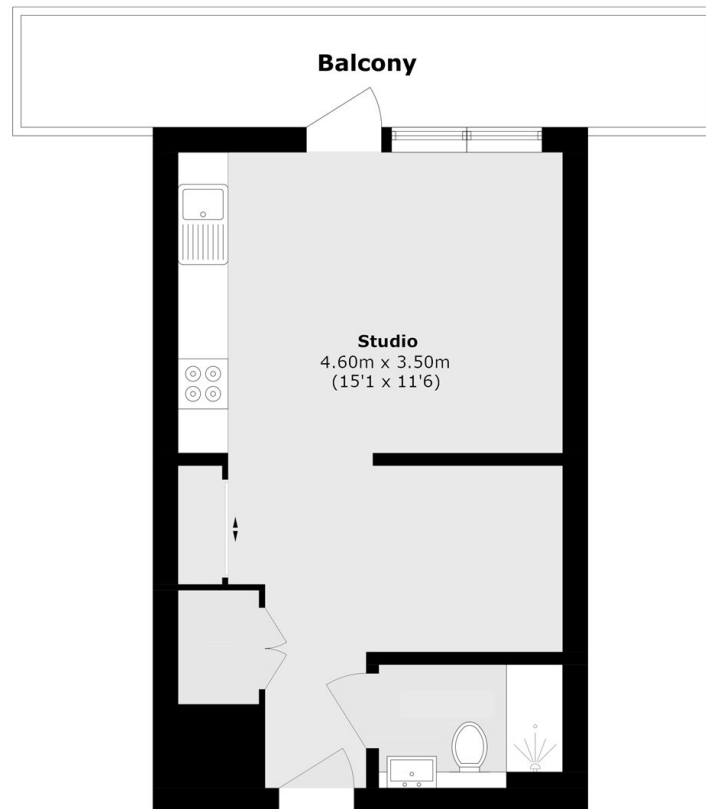
A large apartment in Atkins Square. This beautifully presented property comes part furnished with a dividing bedroom wall, a spacious living area, a private balcony and an on-site gym and concierge.

The property is conveniently located close to Hackney Central, Mare Street and Hackney Downs for all local high street shops, cafés and restaurants.

### Features

- Large Apartment
- Wooden Flooring
- Residents Gym
- Balcony
- New Build
- Part Furnished

# Atkins Square, London, E8



Total area (approx.): 35.0 sq. m (376.7 sq. ft)  
Balcony area (approx.): 11.0 sq. m (118.4 sq. ft)