

A truly stunning detached family home that has been tastefully modernised throughout and is situated in a pleasant and popular cul-de-sac. The property briefly comprises **FOUR BEDROOMS**, beautiful kitchen/family room, modern fitted bathroom, well maintained front and rear gardens, driveway & garage \* A must view to truly appreciate.

**The Accommodation Comprises:**

Obscured UPVC double glazed front door into:

**Entrance Hall**

Parquet flooring, radiator, stairs to first floor landing, under stairs storage cupboard housing utility meters.

**WC 5' 6" x 2' 7" (1.68m x 0.79m)**

Oak door, obscured UPVC double glazed window to side elevation, wash hand basin with mixer tap, radiator, tiled flooring.

**Lounge 15' 7" x 12' 3" (4.75m x 3.73m)**

Double oak doors, UPVC double glazed bay window to front elevation, fireplace with log burner inset, granite hearth, radiator, parquet flooring.

**Kitchen/Family Room 23' 4" x 17' 0" (7.11m x 5.18m)**

Beautifully fitted kitchen with a range of base cupboards and matching eye level units, granite worktops, large island with granite worktop with in-built double gas hob and extractor hood over, ample storage beneath, integrated oven and grill, space and plumbing for washing machine and dishwasher, door to side elevation, bi-fold doors to rear elevation, space and plumbing for American fridge/freezer, dining area has continuation of cupboards, Belfast sink with metro tile splashback.

**First Floor Landing**

UPVC double glazed window to side elevation, access to loft via hatch, double doors to airing cupboard with shelves.

**Bedroom One 14' 10" x 10' 10" (4.52m x 3.30m)**

UPVC double glazed window to front elevation, radiator, oak door to:

**En Suite 5' 7" x 8' 11" (1.70m x 2.72m)**

Obscured UPVC double glazed window to side elevation, double shower cubicle with rainfall shower and attachment, low level WC, wash hand basin set in vanity unit, mirror to wall.

**Bedroom Two 15' 3" max x 10' 10" (4.64m max x 3.30m)**

UPVC double glazed window to rear elevation, radiator, recess with space for sofa/seating area.

**Bedroom Three 10' 9" x 12' 2" max (3.27m x 3.71m max)**

UPVC double glazed window to rear elevation, radiator.

**Bedroom Four 12' 1" x 6' 11" (3.68m x 2.11m)**

UPVC double glazed window to front elevation, radiator.

**Bathroom 3' 4" x 9' 0" (1.02m x 2.74m)**

Obscured UPVC double glazed window to side elevation, beautifully fitted suite comprising of low level WC, wash hand basin set in vanity unit, free standing bath with chrome pedestal taps and hand held shower attachment, double corner shower cubicle with fitted shower.

**Outside**

To the front of the property is a mature garden with shrubs and bushes to borders, driveway and path leading to double gate accessing the garage which has an up and over door, power and light.

The delightful rear garden is mainly laid to lawn with patio area and path, mature shrubs and trees to borders, outside water tap, side gates, wood store, allotment area, green house, summer house, raised seating area.

**General Information**

Construction: Traditional

Water Supply: Portsmouth Water

Electric Supply: Mains

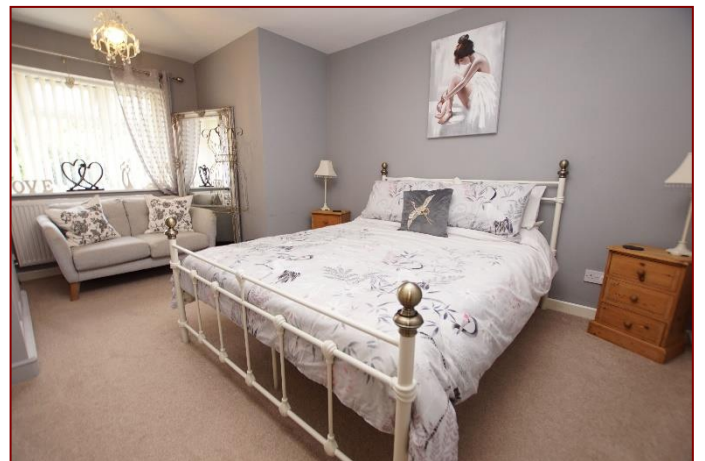
Sewerage: Mains

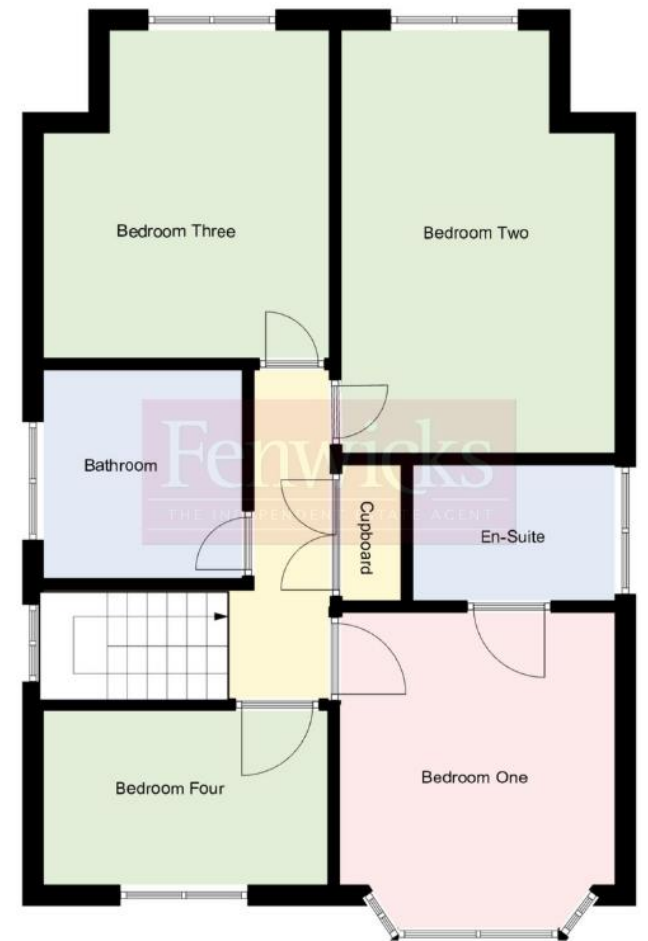
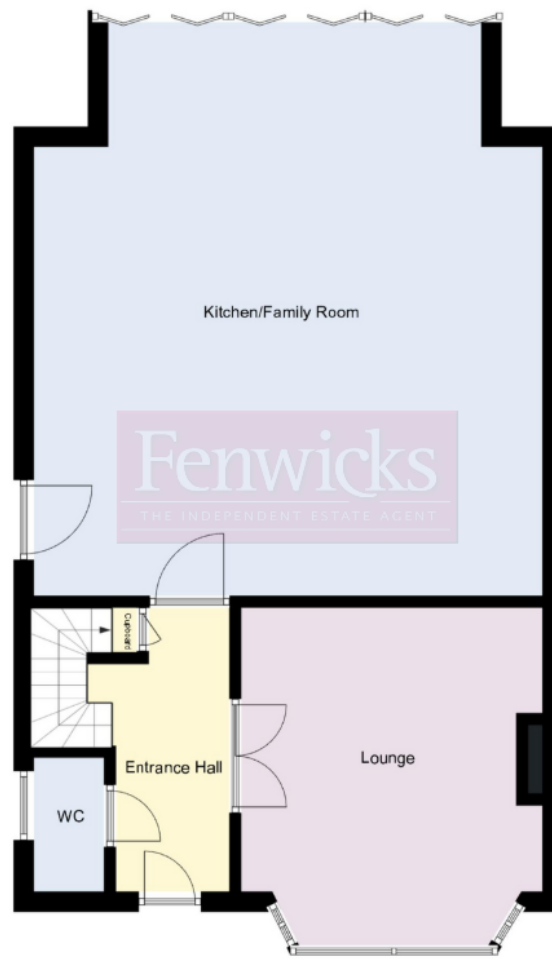
For Mobile & Broadband coverage: <https://checker.ofcom.org.uk>

For Flood risk: [www.gov.uk/check-long-term-flood-risk](http://www.gov.uk/check-long-term-flood-risk)

Tenure: Freehold

Council Tax Band: E





Awaiting EPC

**Disclaimer:** These particulars are set out as a general outline in accordance with the Consumer Protection from Unfair Trading Regulations 2008 (CPR's) and Business Protection from Misleading Marketing Regulations 2008 (BPR's) only for the guidance of intending purchasers or lessees, and do not constitute any part of an offer or contract. Details are given without any responsibility, and any intending purchasers, lessees or third parties should not rely on them as statements or representations of fact, but must satisfy themselves by inspection or otherwise as to the correctness of each of them.

We have not carried out a structural survey and the services, appliances and specific fittings have not been tested. All photographs, measurements, floor plans and distances referred to are given as a guide only and should not be relied upon for the purchase of carpets or any other fixtures or fittings. Gardens, roof terraces, balconies and communal gardens as well as tenure and lease details cannot have their accuracy guaranteed for intending purchasers. Lease details, service ground rent (where applicable) are given as a guide only and should be checked and confirmed by your solicitor prior to exchange of contracts.

No person in the employment of Fenwicks Estates Ltd has any authority to make any representation or warranty whatever in relation to this property. Purchase prices, rents or other prices quoted are correct at the date of publication and, unless otherwise stated, exclusive of VAT.

**Data Protection:** We retain the copyright in all advertising material used to market this Property.

**Money Laundering Regulations 2017:** Intending purchasers will be required to produce identification documentation once an offer is accepted.



£579,995

The Paddock, Gosport, PO12 3PZ

\*DRAFT DETAILS\*

Fenwicks

THE INDEPENDENT ESTATE AGENT

Fenwicks - Gosport Office: 02392 529889 www.fenwicks-estates.co.uk