



OVER 60?

Secure this property
for up to **59% less!**

Guide Price
£425,000

Freehold

3x  2x  1x 

**Cobden Road, Hythe,
Kent, CT21**

Wards
Helping you move forwards



Main features

- Stunning period home in central Hythe
- Beautiful kitchen/diner
- Large bathroom with spacious shower
- Loft converted into a spacious bedroom with dressing area and en-suite shower room
- Useful utility room and Cloakroom

Accommodation

GROUND FLOOR

Entrance Hall
Cloakroom
Kitchen/Diner: 17'8 x 14'4 (5.39m x 4.37m)
Utility: 7'7 x 4'11 (2.31m x 1.50m)

FIRST FLOOR

Landing
Bedroom 2: 14'10 x 10'8 (4.52m x 3.25m)
Bedroom 3: 12'0 x 8'3 (3.66m x 2.52m)
Bathroom: 10'4 x 8'1 (3.15m x 2.47m)

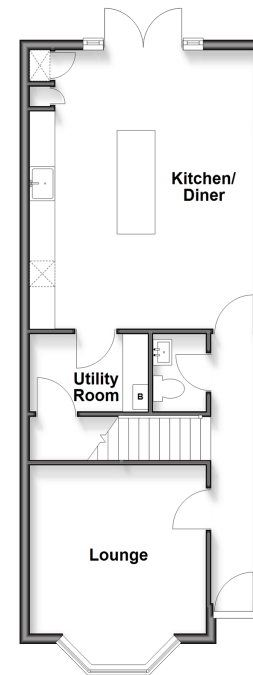
SECOND FLOOR

Landing
Bedroom 1: 11'8 x 11'0 (3.56m x 3.36m)
Dressing Room: 6'9 x 6'4 (2.06m x 1.93m)
En-suite Shower Room: 7'6 x 6'7 (2.29m x 2.01m)

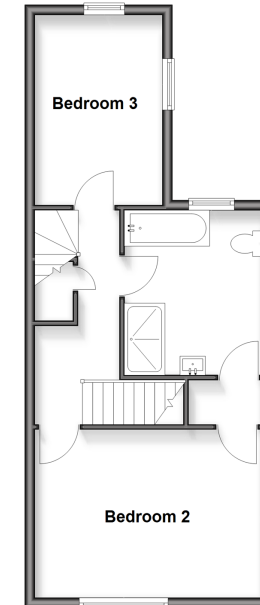
OUTSIDE

Front & Rear Gardens

Ground Floor
Approx. 50.5 sq. metres (544.0 sq. feet)



First Floor
Approx. 43.3 sq. metres (466.4 sq. feet)



Second Floor
Approx. 24.9 sq. metres (267.7 sq. feet)



Call Hythe - 01303 267473 ■ wardsof Kent.co.uk

- If buying to let, the energy rating will need to be improved to at least 'E' rating before you can let the property
- Legal advice should be taken to verify fixtures/fittings, planning, alterations and/or lease details
- Appliances & services are untested, dimensions are approximate and floor plans are not to scale
- Through a Homewise Home For Life Plan people aged 60+ can secure this property for up to 50% less, by purchasing a Lifetime Lease.



12825181/20251023/OH/MIB